

Holstein Directory 2023

1 January 2023



South Africa

Profit From Genetic Progress



ACHIEVER | 29H018296 | ABS ACHIEVER-ET



Reg. Number: 003128557482 Registry Status: 99%-NA
 Date Of Birth: 2015-11-15
 aAa: 423 DMS: 345,456
 Recessives/ Haplotypes:

]] YODER x ALTAEMBASSY
]] WOODCREST MOGUL YODER-ET 000072254526 90
]] COMPASS-TRT AMRC AE J925-ET 003013177242 83
 IB-M/USA HA-USA 12/2022



DTR: Winstar Achiever Model-ET VG-85

Production Dtrs: 9407 Herds: 1457
 Milk: +161 Lbs 99% Rel Beta Casein: A2/A2
 Pro: +26 Lbs +0.07% Kappa Casein: BB
 Fat: +118 Lbs +0.40% EFI: 10.8
 FS: +252 Lbs
 NMS: +934 TPI@: +2781 CMS: +953

Health & Fertility
 SCE: 1.7 99% Rel 5812 Obs
 DCE: 2.1 99% Rel 1404 Obs
 SSB: 5.1 99% Rel 5429 Obs
 DSB: 4.8 99% Rel 1292 Obs
 DPR: -1.6 99% Rel
 HCR: +1.5 CCR: -0.9 LIV: +4
 SCS: 2.68 99% Rel
 PL: +4.2 98% Rel
 CDN MSP 101
 CDN MT 99
 AHI 114
 TransitionRight® ★★★★★
 Bull Fertility Conv ★★★★★

Conformation Dtrs: 3124 Herds: 718 PTAT Rel: 99%

PTAT	0.13		
UDC	0.90		
FLC	0.35		
BWC	-1.68		
ST	-1.48 Short		
SG	-1.40 Frail		
BD	-1.03 Shallow		
DF	0.20 Open		
RA	-0.76 High Pins		
TW	-0.93 Narrow		
RLSV	-0.81 Straight		
RLRV	-0.12 Hock-In		
FA	-0.69 Low		
FLS	0.12 High		
FUA	0.71 Strong		
UH	0.69 High		
UW	0.16 Wide		
UC	0.26 Strong		
UD	0.40 Shallow		
FTP	0.95 Close		
RTP	1.04 Close		
TL	-0.12 Short		

ADEBAYO-P | 29H019833 | FB 8084 ADEBAYO-P-ET



Reg. Number: 003207771882 Registry Status: 99%-1
 Date Of Birth: 2020-03-03
 aAa: DMS:
 Recessives/ Haplotypes:

]] MONUMENT-P x RESOLVE
]] BOMAZ MONUMENT-P-ET 003150307018
]] FB-RVR RESOLVE 8084-ET 003144128820 81
 CDCB HA-USA 12/2022

Production Dtrs: 0 Herds: 0
 Milk: +742 Lbs 82% Rel Beta Casein: A1/A2
 Pro: +50 Lbs +0.09% Kappa Casein: AB
 Fat: +82 Lbs +0.19% EFI: 9.9
 FS: +69 Lbs
 NMS: +1002 TPI@: +2907 CMS: +1022

Health & Fertility
 SCE: 2.3 85% Rel 158 Obs
 DCE: 2.1 70% Rel 0 Obs
 SSB: 5.8 77% Rel 138 Obs
 DSB: 5 64% Rel 0 Obs
 DPR: +1.7 75% Rel
 HCR: +2.2 CCR: +4 LIV: +4.7
 SCS: 2.75 78% Rel
 PL: +7.3 76% Rel
 CDN MSP 107
 CDN MT 99
 AHI 109
 TransitionRight® ★★★★★
 Bull Fertility Conv ★★★★★

Conformation Dtrs: 0 Herds: 0 PTAT Rel: 79%

PTAT	0.39		
UDC	0.94		
FLC	-0.02		
BWC	-0.60		
ST	-0.67 Short		
SG	-0.48 Frail		
BD	-0.62 Shallow		
DF	-0.11 Tight		
RA	0.11 Sloped		
TW	-0.62 Narrow		
RLSV	-0.95 Straight		
RLRV	-0.10 Hock-In		
FA	0.42 Steep		
FLS	-0.18 Low		
FUA	1.17 Strong		
UH	1.01 High		
UW	1.06 Wide		
UC	0.37 Strong		
UD	0.37 Shallow		
FTP	-0.17 Wide		
RTP	-0.15 Wide		
TL	-0.60 Short		

ATRIUM | 29H018772 | DENOVO 7921 ATRIUM-ET

Reg. Number: 003141494507 Registry Status: 99%-NA
 Date Of Birth: 2017-07-03
 aAa: 342 DMS:
 Recessives/ Haplotypes:

]] ACHIEVER x DELTA
]] ABS ACHIEVER-ET 003128557482
]] PEN-COL DELTA BARB-ET 000074258468 83
 IB-M/USA HA-USA 12/2022



DAM: Pen-Col Delta Barb-ET GP-83

Production Dtrs: 1275 Herds: 208
 Milk: +496 Lbs 97% Rel Beta Casein: A2/A2
 Pro: +32 Lbs +0.06% Kappa Casein: BB
 Fat: +94 Lbs +0.26% EFI: 10.7
 FS: +303 Lbs
 NMS: +925 TPI@: +2764 CMS: +939

Health & Fertility
 SCE: 1.8 95% Rel 679 Obs
 DCE: 1.7 81% Rel 214 Obs
 SSB: 5.6 88% Rel 679 Obs
 DSB: 5.5 78% Rel 214 Obs
 DPR: +1.3 88% Rel
 HCR: +1.7 CCR: +2.6 LIV: +3
 SCS: 2.79 94% Rel
 PL: +5.3 89% Rel
 CDN MSP 101
 CDN MT 101
 AHI 104
 TransitionRight® ★★★★★
 Bull Fertility Conv ★★★★★

Conformation Dtrs: 247 Herds: 71 PTAT Rel: 89%

PTAT	-0.22		
UDC	0.41		
FLC	0.19		
BWC	-1.90		
ST	-2.32 Short		
SG	-1.42 Frail		
BD	-1.02 Shallow		
DF	0.45 Open		
RA	0.74 Sloped		
TW	-0.30 Narrow		
RLSV	0.12 Curved		
RLRV	-0.40 Hock-In		
FA	-1.16 Low		
FLS	-0.22 Low		
FUA	-0.39 Loose		
UH	0.34 High		
UW	0.14 Wide		
UC	-0.03 Weak		
UD	-0.63 Deep		
FTP	0.03 Close		
RTP	0.01 Close		
TL	-0.46 Short		



BARBADOS | 29H020744 | DENOVO 4081 BARBADOS-ET

Reg. Number: 003237169372 Registry Status: 99%-I
Date Of Birth: 2021-08-05
aAa: 432 DMS:
Recessives/ Haplotypes:

]] TENNESSEE x ENTITY
]] PINE-TREE TENNESSEE-ET 003150687531
]] DENOVO ENTITY 965-ET 003204166502 83
CDCB HA-USA 12/2022



3RD DAM: Pen-Col Delta Barb-ET GP-83

Production Dtrs: 0 Herds: 0
Milk: +1376 Lbs 80% Rel Beta Casein: A2/A2
Pro: +63 Lbs +0.07% Kappa Casein: BB
Fat: +128 Lbs +0.26% EFI: 10.4
FS: +244 Lbs
NMS: +1147 TPI@: +2979 CMS@: +1161

Health & Fertility
SCE: 1.9 60% Rel 0 Obs
DCE: 1.9 57% Rel 0 Obs
SSB: 5.6 55% Rel 0 Obs
DSB: 4.3 55% Rel 0 Obs
DPR: -2.3 74% Rel
HCR: +0.7 CCR: -1 LIV: +2.7
SCS: 2.9 75% Rel
PL: +5.1 74% Rel
CDN MSP 102
CDN MT 102
AHI 104
TransitionRight® ★★
Bull Fertility Conv

Conformation Dtrs: 0 Herds: 0 PTAT Rel: 78%

PTAT	0.39		
UDC	0.90		
FLC	0.00		
BWC	-1.38		
ST	-1.15 Short		
SG	-0.89 Frail		
BD	-0.55 Shallow		
DF	1.03 Open		
RA	-0.90 High Pins		
TW	0.31 Wide		
RLSV	0.37 Curved		
RLRV	-0.27 Hock-In		
FA	-0.41 Low		
FLS	-0.21 Low		
FUA	0.56 Strong		
UH	1.18 High		
UW	1.08 Wide		
UC	0.00 Strong		
UD	-0.09 Deep		
FTP	0.14 Close		
RTP	0.21 Close		
TL	0.34 Long		

BODIE | 29H019755 | FB 407522 HEROIC BODIE-ET

Reg. Number: 003211289109 Registry Status: 99%-I
Date Of Birth: 2019-12-07
aAa: DMS:
Recessives/ Haplotypes:

]] HEROIC x ACHIEVER
]] PINE-TREE HEROIC-ET 003142332589
]] MS FB 7355 ACHV 407522-ET 003149330027
CDCB HA-USA 12/2022



4TH DAM: Pen-Col Robust Harp-ET VG-87

Production Dtrs: 0 Herds: 0
Milk: +266 Lbs 82% Rel Beta Casein: A2/A2
Pro: +26 Lbs +0.06% Kappa Casein: BB
Fat: +108 Lbs +0.35% EFI: 10.7
FS: +280 Lbs
NMS: +925 TPI@: +2853 CMS@: +940

Health & Fertility
SCE: 1.9 87% Rel 215 Obs
DCE: 1.4 70% Rel 0 Obs
SSB: 5.4 80% Rel 200 Obs
DSB: 4.2 64% Rel 0 Obs
DPR: +0.1 77% Rel
HCR: +2.1 CCR: +1.4 LIV: +2.1
SCS: 2.77 79% Rel
PL: +4.5 77% Rel
CDN MSP 104
CDN MT 104
AHI 106
TransitionRight® ★★★★★
Bull Fertility Conv

Conformation Dtrs: 0 Herds: 0 PTAT Rel: 79%

PTAT	1.29		
UDC	1.45		
FLC	0.33		
BWC	-1.32		
ST	-0.18 Short		
SG	-0.72 Frail		
BD	-0.03 Shallow		
DF	1.74 Open		
RA	-1.55 High Pins		
TW	0.34 Wide		
RLSV	0.60 Curved		
RLRV	-0.21 Hock-In		
FA	-0.38 Low		
FLS	0.47 High		
FUA	0.93 Strong		
UH	1.72 High		
UW	1.75 Wide		
UC	1.71 Strong		
UD	0.54 Shallow		
FTP	1.56 Close		
RTP	2.10 Close		
TL	-0.26 Short		

BONDS | 29H019756 | FB 8084 HEROIC BONDS-ET

Reg. Number: 003207772207 Registry Status: 99%-I
Date Of Birth: 2019-11-24
aAa: 342 DMS:
Recessives/ Haplotypes:

]] HEROIC x RESOLVE
]] PINE-TREE HEROIC-ET 003142332589
]] FB-RVR RESOLVE 8084-ET 003144128820 81
CDCB HA-USA 12/2022



4TH DAM: Unique-Style Bolton Money EX-93

Production Dtrs: 0 Herds: 0
Milk: +437 Lbs 82% Rel Beta Casein: A1/A2
Pro: +33 Lbs +0.07% Kappa Casein: BE
Fat: +101 Lbs +0.30% EFI: 10.4
FS: +85 Lbs
NMS: +883 TPI@: +2832 CMS@: +899

Health & Fertility
SCE: 1.6 90% Rel 366 Obs
DCE: 1.8 70% Rel 0 Obs
SSB: 5.1 84% Rel 364 Obs
DSB: 4.5 63% Rel 0 Obs
DPR: -0.7 76% Rel
HCR: +0.9 CCR: +0.5 LIV: +2.2
SCS: 2.78 79% Rel
PL: +5 76% Rel
CDN MSP 104
CDN MT 102
AHI 106
TransitionRight® ★★★★★
Bull Fertility Conv

Conformation Dtrs: 0 Herds: 0 PTAT Rel: 79%

PTAT	1.19		
UDC	1.87		
FLC	-0.14		
BWC	-0.90		
ST	0.17 Tall		
SG	-0.67 Frail		
BD	-0.41 Shallow		
DF	0.95 Open		
RA	-0.45 High Pins		
TW	0.14 Wide		
RLSV	0.43 Curved		
RLRV	-0.44 Hock-In		
FA	0.27 Steep		
FLS	-0.01 Low		
FUA	2.02 Strong		
UH	2.18 High		
UW	1.50 Wide		
UC	1.19 Strong		
UD	1.82 Shallow		
FTP	0.89 Close		
RTP	1.07 Close		
TL	-0.03 Short		



CABO | 29H019433 | DENOVO 16034 CABO-ET



Reg. Number: 003204165272 Registry Status: 99%-I
Date Of Birth: 2019-06-02
aAa: DMS:
Recessives/ Haplotypes:

]] ENTITY x VERONA
]] DENOVO 8084 ENTITY-ET 003141494670
]] ABS VERONA 7759-ET 003141494345
CDCB HA-USA 12/2022



MGD: Ms Cardigans Js Cashmere-ET VG-85

Production Dtrs: 0 Herds: 0

Milk: +693 Lbs 82% Rel Beta Casein: A1/A2
Pro: +45 Lbs +0.08% Kappa Casein: AE
Fat: +87 Lbs +0.21% EFI: 9.9
FS: +129 Lbs
NMS: +850 TPI@: +2799 CMS: +867

Health & Fertility

SCE: 1.6 93% Rel 751 Obs
DCE: 1.6 76% Rel 0 Obs
SSB: 5.3 85% Rel 610 Obs
DSB: 4.4 71% Rel 0 Obs
DPR: -0.2 77% Rel
HCR: +0.4 CCR: +0.4 LIV: +2.8
PL: +4 77% Rel
CDN MSP 97
CDN MT 100
AHI 97
TransitionRight® ★★
Bull Fertility Conv ★★

Conformation

Dtrs: 0 Herds: 0 PTAT Rel: 80%

PTAT	0.68		
UDC	1.10		
FLC	1.04		
BWC	-0.04		
ST	-0.25 Short		
SG	-0.17 Frail		
BD	-0.60 Shallow		
DF	0.03 Open		
RA	-0.83 High Pins		
TW	1.17 Wide		
RLSV	-0.27 Straight		
RLRV	1.16 Straight		
FA	0.90 Steep		
FLS	0.84 High		
FUA	1.12 Strong		
UH	1.25 High		
UW	1.01 Wide		
UC	0.35 Strong		
UD	1.03 Shallow		
FTP	0.74 Close		
RTP	0.70 Close		
TL	-1.12 Short		

CASCADE | 29H019964 | DENOVO 3756 CASCADE-ET



Reg. Number: 003127591354 Registry Status: 99%-I
Date Of Birth: 2021-01-23
aAa: 345 DMS:
Recessives/ Haplotypes:

]] CABO x ACURA
]] DENOVO 16034 CABO-ET 003204165272
]] DENOVO ACURA 887-ET 003204166424 80
CDCB HA-USA 12/2022



MGD: De-Su Frazzled 6984-ET GP-84

Production Dtrs: 0 Herds: 0

Milk: +1501 Lbs 79% Rel Beta Casein: A2/A2
Pro: +67 Lbs +0.07% Kappa Casein: AB
Fat: +108 Lbs +0.17% EFI: 10.3
FS: +251 Lbs
NMS: +1127 TPI@: +3024 CMS: +1145

Health & Fertility

SCE: 2.1 72% Rel 2 Obs
DCE: 2.3 72% Rel 0 Obs
SSB: 5.9 65% Rel 2 Obs
DSB: 5.2 65% Rel 0 Obs
DPR: -0.6 74% Rel
HCR: +0.6 CCR: +0.2 LIV: +2.5
PL: +5.3 74% Rel
CDN MSP 99
CDN MT 100
AHI 103
TransitionRight® ★★
Bull Fertility Conv

Conformation

Dtrs: 0 Herds: 0 PTAT Rel: 77%

PTAT	0.63		
UDC	1.43		
FLC	-0.11		
BWC	-1.25		
ST	-0.61 Short		
SG	-0.79 Frail		
BD	-0.68 Shallow		
DF	1.17 Open		
RA	-0.78 High Pins		
TW	0.39 Wide		
RLSV	1.28 Curved		
RLRV	-0.47 Hock-In		
FA	-0.58 Low		
FLS	-0.08 Low		
FUA	1.22 Strong		
UH	1.78 High		
UW	1.76 Wide		
UC	0.53 Strong		
UD	0.33 Shallow		
FTP	1.18 Close		
RTP	1.45 Close		
TL	-0.49 Short		

CREAMER | 29H019017 | SANDY-VALLEY CREAMER-ET

Reg. Number: 003140616509 Registry Status: 99%-NA
Date Of Birth: 2018-01-11
aAa: 432 DMS:
Recessives/ Haplotypes:

]] ACHIEVER x SILVER
]] ABS ACHIEVER-ET 003128557482
]] SANDY-VALLEY COKISNCREAM-ET 003125601350 93
IB-M/USA HA-USA 12/2022



DAM: Sandy-Valley Cokisncream-ET EX-93

Production Dtrs: 491 Herds: 193

Milk: +453 Lbs 96% Rel Beta Casein: A2/A2
Pro: +31 Lbs +0.06% Kappa Casein: AB
Fat: +109 Lbs +0.32% EFI: 10.9
FS: +77 Lbs
NMS: +798 TPI@: +2831 CMS: +814

Health & Fertility

SCE: 2 98% Rel 2587 Obs
DCE: 2.9 79% Rel 175 Obs
SSB: 6 95% Rel 2419 Obs
DSB: 5.1 78% Rel 153 Obs
DPR: -1.5 89% Rel
HCR: +1 CCR: -1.4 LIV: +1.2
SCS: 2.68 94% Rel
PL: +2.6 88% Rel
CDN MSP 100
CDN MT 101
AHI 109
TransitionRight® ★★
Bull Fertility Conv ★★

Conformation

Dtrs: 155 Herds: 73 PTAT Rel: 93%

PTAT	1.16		
UDC	2.10		
FLC	1.20		
BWC	-0.48		
ST	-0.52 Short		
SG	-0.19 Frail		
BD	-0.31 Shallow		
DF	0.31 Open		
RA	-0.62 High Pins		
TW	-0.29 Narrow		
RLSV	-0.76 Straight		
RLRV	1.03 Straight		
FA	0.68 Steep		
FLS	1.04 High		
FUA	1.65 Strong		
UH	2.98 High		
UW	1.97 Wide		
UC	1.42 Strong		
UD	0.99 Shallow		
FTP	1.39 Close		
RTP	1.63 Close		
TL	0.48 Long		



DOMINATOR | 29H020144 | SCHURER-HAMMON DOMINATOR

Reg. Number: 000956066765 Registry Status:
Date Of Birth: 2020-02-18
aAa: DMS:
Recessives/ Haplotypes:

]] HEROIC x MEDLEY
]] PINE-TREE HEROIC-ET 003142332589
]] MADDY 000953362861
CDCB HA-USA 12/2022

Production Dtrs: 0 Herds: 0
Milk: +128 Lbs 81% Rel Beta Casein: A2/A2
Pro: +27 Lbs +0.08% Kappa Casein: BB
Fat: +110 Lbs +0.37% EFI: 10.3
FS: +187 Lbs
NMS: +881 TPI@: +2748 CMS: +897

Health & Fertility
SCE: 1.6 63% Rel 0 Obs
DCE: 2.2 62% Rel 0 Obs
SSB: 5.1 60% Rel 0 Obs
DSB: 5.7 60% Rel 0 Obs
DPR: -0.3 76% Rel
HCR: +0.4 CCR: +0.7 LIV: +2.1
SCS: 2.84 78% Rel
PL: +4.6 78% Rel
CDN MSP 104
CDN MT 104
AHI 106
TransitionRight® ★★
Bull Fertility Conv



SIRE: 29H019000 Pine-Tree HEROIC-ET

Conformation Dtrs: 0 Herds: 0 PTAT Rel: 79%

PTAT	-0.07
UDC	0.78
FLC	0.42
BWC	-1.38
ST	-1.66 Short
SG	-1.23 Frail
BD	-1.38 Shallow
DF	-0.32 Tight
RA	-1.23 High Pins
TW	-0.91 Narrow
RLSV	0.38 Curved
RLRV	-0.13 Hock-In
FA	-0.58 Low
FLS	0.14 High
FUA	0.73 Strong
UH	0.52 High
UW	0.57 Wide
UC	-0.33 Weak
UD	0.21 Shallow
FTP	0.18 Close
RTP	-0.01 Wide
TL	-0.52 Short

DUFFY | 29H019773 | KINGS-RANSOM DUFFY-ET



Reg. Number: 003208834966 Registry Status: 99%-I
Date Of Birth: 2020-01-01
aAa: 234 DMS:
Recessives/ Haplotypes:

]] ACURA x RIO
]] PINE-TREE ACURA-ET 003142332520
]] KINGS-RANSOM R 003146394811 87
DONTRYATHOME
CDCB HA-USA 12/2022

Production Dtrs: 0 Herds: 0
Milk: +1336 Lbs 82% Rel Beta Casein: A2/A2
Pro: +60 Lbs +0.06% Kappa Casein: AB
Fat: +102 Lbs +0.17% EFI: 10
FS: +249 Lbs
NMS: +1164 TPI@: +3078 CMS: +1178

Health & Fertility
SCE: 2.4 85% Rel 166 Obs
DCE: 2.1 70% Rel 0 Obs
SSB: 5.7 79% Rel 166 Obs
DSB: 4.3 64% Rel 0 Obs
DPR: +0.9 76% Rel
HCR: +2.5 CCR: +2 LIV: +5.1
SCS: 2.84 79% Rel
PL: +6.7 77% Rel
CDN MSP 102
CDN MT 102
AHI 111
TransitionRight® ★★★★★
Bull Fertility Conv



DAM: Kings-Ransom R Dontryathome VG-85

Conformation Dtrs: 0 Herds: 0 PTAT Rel: 81%

PTAT	0.84
UDC	1.29
FLC	1.06
BWC	-1.20
ST	-1.06 Short
SG	-0.72 Frail
BD	-0.59 Shallow
DF	0.66 Open
RA	-0.12 High Pins
TW	-0.45 Narrow
RLSV	-0.50 Straight
RLRV	0.67 Straight
FA	0.22 Steep
FLS	0.83 High
FUA	1.03 Strong
UH	1.50 High
UW	1.72 Wide
UC	0.23 Strong
UD	-0.04 Deep
FTP	0.48 Close
RTP	0.74 Close
TL	-0.12 Short

DULUTH | 29H019082 | WINSTAR DULUTH-ET



Reg. Number: 003149432290 Registry Status: 99%-NA
Date Of Birth: 2018-03-29
aAa: 516 DMS:
Recessives/ Haplotypes:

]] MEDLEY x JEDI
]] ABS MEDLEY-ET 003128557570
]] SEAGULL-BAY JEDI DENISE-ET 003135938676 85
IB-M/USA HA-USA 12/2022

Production Dtrs: 232 Herds: 70
Milk: +337 Lbs 94% Rel Beta Casein: A1/A2
Pro: +37 Lbs +0.09% Kappa Casein: BB
Fat: +73 Lbs +0.21% EFI: 10.5
FS: -138 Lbs
NMS: +710 TPI@: +2717 CMS: +729

Health & Fertility
SCE: 1.6 95% Rel 790 Obs
DCE: 1.9 76% Rel 70 Obs
SSB: 5.5 87% Rel 645 Obs
DSB: 4.7 71% Rel 52 Obs
DPR: -1.2 81% Rel
HCR: +2.1 CCR: +0.4 LIV: +2.3
SCS: 2.78 91% Rel
PL: +5.1 84% Rel
CDN MSP 105
CDN MT 104
AHI 109
TransitionRight® ★★★★★
Bull Fertility Conv



DAM: Seagull-Bay Jedi Denise-ET GP-82

Conformation Dtrs: 18 Herds: 9 PTAT Rel: 86%

PTAT	1.23
UDC	1.49
FLC	0.86
BWC	0.92
ST	-0.34 Short
SG	0.91 Strong
BD	0.10 Deep
DF	-0.80 Tight
RA	-1.18 High Pins
TW	-0.27 Narrow
RLSV	-2.01 Straight
RLRV	1.41 Straight
FA	0.99 Steep
FLS	0.61 High
FUA	2.04 Strong
UH	1.18 High
UW	1.79 Wide
UC	0.41 Strong
UD	1.31 Shallow
FTP	0.60 Close
RTP	-0.09 Wide
TL	-0.68 Short



ELGIN | 29H020623 | DENOVO 3946 ELGIN-ET



Reg. Number: 003127591544 Registry Status: 99%-I
 Date Of Birth: 2021-05-21
 aAa: DMS:
 Recessives/ Haplotypes:

]] ENVY x RIVETING
]] DENOVO 16333 ENVY-ET 003210132842
]] PENN-ENGLAND LEHIGH16154-ET 003205771161 82
 CDCB HA-USA 12/2022

Production Dtrs: 0 Herds: 0
 Milk: +2002 Lbs 80% Rel Beta Casein: A2/A2
 Pro: +61 Lbs 0.00% Kappa Casein: AA
 Fat: +96 Lbs +0.06% EFI: 10
 FS: +176 Lbs
 NMS: +1056 TPI@: +2995 CMS: +1061

Health & Fertility
 SCE: 2.1 63% Rel 0 Obs
 DCE: 2.2 57% Rel 0 Obs
 SSB: 6.2 59% Rel 0 Obs
 DSB: 4.8 55% Rel 0 Obs
 DPR: -0.2 74% Rel
 HCR: +1.7 CCR: +0.4 LIV: +3.4
 SCS: 2.78 75% Rel
 PL: +5.8 74% Rel
 CDN MSP 99
 CDN MT 97
 AHI 105
 TransitionRight® ★★★★★
 Bull Fertility Conv



5TH DAM: Quiet-Brook-D Babybook-ET EX-94

Conformation Dtrs: 0 Herds: 0 PTAT Rel: 78%

PTAT	1.14		
UDC	1.50		
FLC	0.45		
BWC	-1.12		
ST	-0.75 Short		
SG	-0.54 Frail		
BD	-0.58 Shallow		
DF	1.22 Open		
RA	0.19 Sloped		
TW	0.36 Wide		
RLSV	0.42 Curved		
RLRV	0.52 Straight		
FA	0.09 Steep		
FLS	0.21 High		
FUA	0.94 Strong		
UH	2.18 High		
UW	2.30 Wide		
UC	0.81 Strong		
UD	-0.11 Deep		
FTP	1.20 Close		
RTP	1.68 Close		
TL	-1.31 Short		

ENTITY | 29H018858 | DENOVO 8084 ENTITY-ET



Reg. Number: 003141494670 Registry Status: 99%-I
 Date Of Birth: 2017-09-24
 aAa: 165 DMS:
 Recessives/ Haplotypes:

]] MATTERS x RUBICON
]] TRIPLECROWN JW MATTERS-ET 003129038181
]] PEN-COL RUBICON BETH-ET 000074258448 87
 IB-M/USA HA-USA 12/2022

Production Dtrs: 1566 Herds: 168
 Milk: +1027 Lbs 99% Rel Beta Casein: A1/A2
 Pro: +44 Lbs +0.04% Kappa Casein: AE
 Fat: +103 Lbs +0.22% EFI: 9.8
 FS: +57 Lbs
 NMS: +845 TPI@: +2760 CMS: +854

Health & Fertility
 SCE: 1.8 97% Rel 1340 Obs
 DCE: 1.5 93% Rel 138 Obs
 SSB: 5.5 93% Rel 1102 Obs
 DSB: 4 91% Rel 130 Obs
 DPR: -1.7 91% Rel
 HCR: -0.8 CCR: -1.1 LIV: +3.3
 SCS: 2.93 97% Rel
 PL: +3.6 90% Rel
 CDN MSP 95
 CDN MT 98
 AHI 97
 TransitionRight® ★★★★★
 Bull Fertility Conv



DAM: Pen-Col Rubicon Beth-ET VG-87

Conformation Dtrs: 204 Herds: 68 PTAT Rel: 94%

PTAT	0.61		
UDC	0.71		
FLC	0.95		
BWC	0.09		
ST	0.23 Tall		
SG	0.17 Strong		
BD	-0.32 Shallow		
DF	0.51 Open		
RA	-0.21 High Pins		
TW	1.07 Wide		
RLSV	0.06 Curved		
RLRV	1.58 Straight		
FA	1.01 Steep		
FLS	0.74 High		
FUA	0.84 Strong		
UH	0.77 High		
UW	1.08 Wide		
UC	0.14 Strong		
UD	0.45 Shallow		
FTP	1.15 Close		
RTP	1.07 Close		
TL	-0.87 Short		

ENVY | 29H019510 | DENOVO 16333 ENVY-ET



Reg. Number: 003210132842 Registry Status: 99%-I
 Date Of Birth: 2019-08-15
 aAa: DMS:
 Recessives/ Haplotypes:

]] ENTITY x ACHIEVER
]] DENOVO 8084 ENTITY-ET 003141494670
]] DE-SU ACHIEVER 7470-ET 003141494056 81
 CDCB HA-USA 12/2022

Production Dtrs: 0 Herds: 0
 Milk: +1111 Lbs 82% Rel Beta Casein: A2/A2
 Pro: +52 Lbs +0.06% Kappa Casein: AB
 Fat: +120 Lbs +0.27% EFI: 10.1
 FS: -24 Lbs
 NMS: +925 TPI@: +2892 CMS: +938

Health & Fertility
 SCE: 2.3 95% Rel 802 Obs
 DCE: 2.1 70% Rel 0 Obs
 SSB: 6.3 89% Rel 793 Obs
 DSB: 5.2 64% Rel 0 Obs
 DPR: -1.7 77% Rel
 HCR: -0.9 CCR: -1.2 LIV: +3.6
 SCS: 2.87 79% Rel
 PL: +3.7 77% Rel
 CDN MSP 100
 CDN MT 100
 AHI 102
 TransitionRight® ★★★★★
 Bull Fertility Conv



DAM: De-Su Achiever 7470-ET

Conformation Dtrs: 0 Herds: 0 PTAT Rel: 80%

PTAT	1.11		
UDC	0.85		
FLC	0.95		
BWC	0.01		
ST	0.50 Tall		
SG	0.49 Strong		
BD	0.69 Deep		
DF	1.38 Open		
RA	-0.24 High Pins		
TW	0.78 Wide		
RLSV	0.13 Curved		
RLRV	1.19 Straight		
FA	0.65 Steep		
FLS	0.95 High		
FUA	0.93 Strong		
UH	1.09 High		
UW	1.25 Wide		
UC	0.89 Strong		
UD	0.26 Shallow		
FTP	1.43 Close		
RTP	1.65 Close		
TL	-0.46 Short		



GILLIGAN | 29H019894 | BOMAZ GILLIGAN-ET

Reg. Number: 003219696559 Registry Status: 99%-I
Date Of Birth: 2020-10-22
aAa: 453 DMS:
Recessives/ Haplotypes:

]] GALILEO x SASSAFRAS
]] WINSTAR GALILEO-ET 003201862905
]] BOMAZ SASSAFRAS 8791-ET 003142218669 85
CDCB HA-USA 12/2022

Production Dtrs: 0 Herds: 0
Milk: +1209 Lbs 80% Rel Beta Casein: A2/A2
Pro: +43 Lbs +0.02% Kappa Casein: AB
Fat: +88 Lbs +0.14% EFI: 10.2
FS: +1 Lbs
NMS: +919 TPI@: +2854 CMS: +926

Health & Fertility
SCE: 1.8 62% Rel 0 Obs
DCE: 1.7 60% Rel 0 Obs
SSB: 5.2 58% Rel 0 Obs
DSB: 3.9 58% Rel 0 Obs
DPR: +1 73% Rel
HCR: +2.4 CCR: +2.7 LIV: +3.9
SCS: 2.81 75% Rel
PL: +5.9 74% Rel
CDN MSP 103
CDN MT 98
AHI 108
TransitionRight® ★★★★★
Bull Fertility Conv

Conformation Dtrs: 0 Herds: 0 PTAT Rel: 78%

PTAT	0.77		
UDC	1.14		
FLC	-0.47		
BWC	-0.47		
ST	-0.27 Short		
SG	-0.14 Frail		
BD	-0.31 Shallow		
DF	0.56 Open		
RA	0.76 Sloped		
TW	-0.10 Narrow		
RLSV	-0.89 Straight		
RLRV	-0.82 Hock-In		
FA	0.06 Steep		
FLS	-0.41 Low		
FUA	1.00 Strong		
UH	1.48 High		
UW	1.41 Wide		
UC	0.35 Strong		
UD	0.80 Shallow		
FTP	-0.15 Wide		
RTP	0.20 Close		
TL	0.59 Long		

GOLDEN | 29H019987 | PINE-TREE GOLDEN-ET

Reg. Number: 003213241866 Registry Status: 99%-I
Date Of Birth: 2020-11-08
aAa: 246 DMS:
Recessives/ Haplotypes:

]] GALILEO x PROPHECY
]] WINSTAR GALILEO-ET 003201862905
]] PINE-TREE 5976 PROP 7829-ET 003145982775 86
CDCB HA-USA 12/2022

Production Dtrs: 0 Herds: 0
Milk: +915 Lbs 80% Rel Beta Casein: A2/A2
Pro: +54 Lbs +0.09% Kappa Casein: BB
Fat: +89 Lbs +0.19% EFI: 10.5
FS: -22 Lbs
NMS: +899 TPI@: +2893 CMS: +919

Health & Fertility
SCE: 2 72% Rel 15 Obs
DCE: 1.9 70% Rel 0 Obs
SSB: 5.7 63% Rel 15 Obs
DSB: 4.5 64% Rel 0 Obs
DPR: -0.7 74% Rel
HCR: +1.6 CCR: +0.5 LIV: +2.5
SCS: 2.74 76% Rel
PL: +5 75% Rel
CDN MSP 105
CDN MT 106
AHI 98
TransitionRight® ★★★
Bull Fertility Conv

Conformation Dtrs: 0 Herds: 0 PTAT Rel: 79%

PTAT	1.23		
UDC	1.39		
FLC	0.36		
BWC	0.09		
ST	0.56 Tall		
SG	0.27 Strong		
BD	0.15 Deep		
DF	0.81 Open		
RA	0.38 Sloped		
TW	0.79 Wide		
RLSV	-0.27 Straight		
RLRV	0.03 Straight		
FA	0.47 Steep		
FLS	0.57 High		
FUA	1.44 Strong		
UH	2.31 High		
UW	1.98 Wide		
UC	0.01 Strong		
UD	1.44 Shallow		
FTP	-0.72 Wide		
RTP	-1.03 Wide		
TL	0.65 Long		



DAM: Pine-Tree 5976 Prop 7829-ET VG-86

HARRINGTON | 29H019545 | DENOVO 16413 HARRINGTON-ET

Reg. Number: 003210132922 Registry Status: 99%-I
Date Of Birth: 2019-10-04
aAa: DMS:
Recessives/ Haplotypes:

]] HEROIC x FRAZZLED
]] PINE-TREE HEROIC-ET 003142332589
]] DE-SU FRAZZLED 6984-ET 003141493570 84
CDCB HA-USA 12/2022

Production Dtrs: 0 Herds: 0
Milk: +566 Lbs 82% Rel Beta Casein: A2/A2
Pro: +30 Lbs +0.04% Kappa Casein: AB
Fat: +84 Lbs +0.22% EFI: 10.8
FS: +55 Lbs
NMS: +838 TPI@: +2792 CMS: +852

Health & Fertility
SCE: 1.9 89% Rel 298 Obs
DCE: 1.9 70% Rel 0 Obs
SSB: 4.9 83% Rel 294 Obs
DSB: 4 64% Rel 0 Obs
DPR: +0.1 77% Rel
HCR: +1.1 CCR: +1.6 LIV: +1.3
SCS: 2.66 80% Rel
PL: +5.9 77% Rel
CDN MSP 107
CDN MT 98
AHI 119
TransitionRight® ★★★★★
Bull Fertility Conv

Conformation Dtrs: 0 Herds: 0 PTAT Rel: 80%

PTAT	1.17		
UDC	1.31		
FLC	0.48		
BWC	-0.41		
ST	-0.03 Short		
SG	-0.26 Frail		
BD	-0.31 Shallow		
DF	0.22 Open		
RA	-0.86 High Pins		
TW	-0.51 Narrow		
RLSV	0.10 Curved		
RLRV	-0.03 Hock-In		
FA	0.20 Steep		
FLS	0.59 High		
FUA	1.40 Strong		
UH	1.35 High		
UW	1.03 Wide		
UC	0.95 Strong		
UD	1.22 Shallow		
FTP	1.07 Close		
RTP	1.40 Close		
TL	-0.25 Short		



BULL: 29H019545 Denovo 16413 HARRINGTON-ET



HASHTAG | 29H019864 | AOT HASHTAG-ET



Reg. Number: 003217133557 Registry Status: 99%-I
 Date of Birth: 2020-06-12
 aAa: DMS:
 Recessives/ Haplotypes:

]] FASTBALL x DELTA
]] BOMAZ FASTBALL-ET 003150307024
]] COOKIECUTTER DTA HABITAN-ET 003134739087 90
 CDCB HA-USA 12/2022



DAM: Cookiecutter Dta Habitan-ET EX-90

Production			Dtrs: 0 Herds: 0	
Milk: +1097 Lbs	83% Rel	Beta Casein: A2/A2		
Pro: +37 Lbs	+0.01%	Kappa Casein: AB		
Fat: +98 Lbs	+0.19%	EFI: 10.2		
FS: +116 Lbs				
NMS: +873	TPI@: +2897	CMS\$: +881		
Health & Fertility				
SCE: 2	64% Rel		0 Obs	
DCE: 2.6	62% Rel		0 Obs	
SSB: 5.7	61% Rel		0 Obs	
DSB: 6.4	61% Rel		0 Obs	
DPR: -0.6	77% Rel			
HCR: +2.7	CCR: +0.9		LIV: +1.2	
SCS: 2.73	80% Rel			
PL: +4.7	77% Rel			
CDN MSP	105			
CDN MT	105			
AHI	100			
TransitionRight®	★★★★			
Bull Fertility Conv				

Conformation Dtrs: 0 Herds: 0 PTAT Rel: 81%

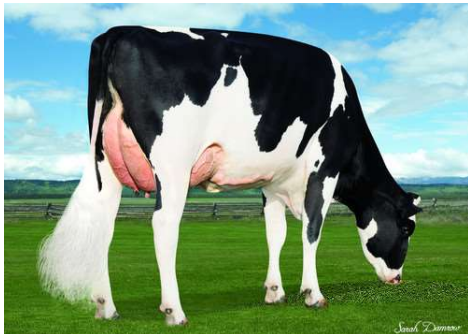
Conformation	Value	Target
PTAT	1.91	
UDC	1.94	
FLC	1.04	
BWC	-0.47	
ST	0.30 Tall	
SG	0.16 Strong	
BD	0.49 Deep	
DF	1.71 Open	
RA	-0.95 High Pins	
TW	0.65 Wide	
RLSV	0.12 Curved	
RLRV	0.67 Straight	
FA	1.06 Steep	
FLS	1.13 High	
FUA	1.76 Strong	
UH	2.87 High	
UW	2.75 Wide	
UC	1.35 Strong	
UD	0.56 Shallow	
FTP	0.58 Close	
RTP	0.87 Close	
TL	0.35 Long	

HAWKEYE | 29H019403 | WINSTAR HAWKEYE-ET



Reg. Number: 003206709088 Registry Status: 99%-I
 Date of Birth: 2019-03-09
 aAa: DMS:
 Recessives/ Haplotypes:

]] AMAZON x FRAZZLED
]] SEAGULL-BAY AMAZON-ET 003137661386
]] TRIPLECROWN-JB FRZ 31107-ET 003139798504 86
 CDCB HA-USA 12/2022



DAM: Triplecrown-Jb Frz 31107-ET VG-86

Production			Dtrs: 0 Herds: 0	
Milk: +1293 Lbs	82% Rel	Beta Casein: A2/A2		
Pro: +45 Lbs	+0.02%	Kappa Casein: AB		
Fat: +87 Lbs	+0.13%	EFI: 10.2		
FS: +14 Lbs				
NMS: +902	TPI@: +2801	CMS\$: +911		
Health & Fertility				
SCE: 1.7	93% Rel		572 Obs	
DCE: 1.9	70% Rel		0 Obs	
SSB: 5.4	86% Rel		531 Obs	
DSB: 4.6	63% Rel		0 Obs	
DPR: +0.2	77% Rel			
HCR: +1.8	CCR: +1.4		LIV: +3.2	
SCS: 2.7	79% Rel			
PL: +5.7	77% Rel			
CDN MSP	96			
CDN MT	99			
AHI	108			
TransitionRight®	★★★★			
Bull Fertility Conv	★★★★★			

Conformation Dtrs: 0 Herds: 0 PTAT Rel: 80%

Conformation	Value	Target
PTAT	0.10	
UDC	0.84	
FLC	-0.15	
BWC	-0.04	
ST	-0.76 Short	
SG	-0.09 Frail	
BD	-0.61 Shallow	
DF	-0.54 Tight	
RA	-0.35 High Pins	
TW	-0.02 Narrow	
RLSV	-0.76 Straight	
RLRV	-0.36 Hock-In	
FA	-0.06 Low	
FLS	-0.28 Low	
FUA	0.97 Strong	
UH	0.69 High	
UW	0.61 Wide	
UC	0.39 Strong	
UD	0.36 Shallow	
FTP	0.49 Close	
RTP	0.60 Close	
TL	0.18 Long	

HOME | 29H020097 | WILDER HOME ET



Reg. Number: 000540355379 Registry Status:
 Date of Birth: 2019-10-06
 aAa: 243 DMS:
 Recessives/ Haplotypes:

]] ARISTOCRAT x JEDI
]] MR FRAZZLED ARISTOCRAT-ET 003142041200
]] WILDER HEDI 000539855545
 CDCB HA-USA 12/2022



G.DAM: Wilder Herz-P-2yrs, VG85

Production			Dtrs: 0 Herds: 0	
Milk: +1406 Lbs	81% Rel	Beta Casein: A1/A1		
Pro: +50 Lbs	+0.02%	Kappa Casein: BE		
Fat: +60 Lbs	+0.02%	EFI: 10.1		
FS: -91 Lbs				
NMS: +721	TPI@: +2733	CMS\$: +728		
Health & Fertility				
SCE: 1.8	63% Rel		0 Obs	
DCE: 1.7	61% Rel		0 Obs	
SSB: 5.4	60% Rel		0 Obs	
DSB: 5.3	59% Rel		0 Obs	
DPR: +1.5	76% Rel			
HCR: +2.5	CCR: +3		LIV: +0.5	
SCS: 2.83	78% Rel			
PL: +4.5	77% Rel			
CDN MSP	95			
CDN MT	102			
AHI	99			
TransitionRight®	★★★★			
Bull Fertility Conv				

Conformation Dtrs: 0 Herds: 0 PTAT Rel: 79%

Conformation	Value	Target
PTAT	0.96	
UDC	1.40	
FLC	-0.80	
BWC	0.85	
ST	1.20 Tall	
SG	0.58 Strong	
BD	0.11 Deep	
DF	-0.07 Tight	
RA	-0.16 High Pins	
TW	0.66 Wide	
RLSV	-0.18 Straight	
RLRV	-0.88 Hock-In	
FA	0.27 Steep	
FLS	-0.42 Low	
FUA	2.11 Strong	
UH	1.20 High	
UW	1.26 Wide	
UC	1.42 Strong	
UD	2.02 Shallow	
FTP	1.66 Close	
RTP	1.77 Close	
TL	-0.54 Short	



HOWLER | 29H018878 | PINE-TREE HOWLER-ET

Reg. Number: 003142332766 Registry Status: 99%-I
Date Of Birth: 2017-08-20
aAa: DMS:
Recessives/ Haplotypes:

]] CHARLEY x DELTA
]] DG CHARLEY 000538920253
]] SANDY-VALLEY NO LIMIT-ET 003125601540 85
IB-M/USA HA-USA 12/2022

Production Dtrs: 1021 Herds: 174
Milk: +564 Lbs 98% Rel Beta Casein: A2/A2
Pro: +34 Lbs +0.06% Kappa Casein: AB
Fat: +49 Lbs +0.10% EFI: 10.8
FS: +137 Lbs
NMS: +656 TPI@: +2599 CMS@: +673

Health & Fertility
SCE: 2 97% Rel 1384 Obs
DCE: 1.8 84% Rel 290 Obs
SSB: 5.3 93% Rel 1270 Obs
DSB: 4.6 84% Rel 248 Obs
DPR: +0.5 91% Rel
HCR: -0.1 CCR: +2 LIV: +1.3
SCS: 2.64 97% Rel
PL: +4.2 89% Rel
CDN MSP 99
CDN MT 103
AHI 110
TransitionRight® ★★★★★
Bull Fertility Conv ★★★★★



BULL: 29H018878 Pine-Tree HOWLER-ET

Conformation Dtrs: 123 Herds: 52 PTAT Rel: 91%

PTAT	0.74		
UDC	1.08		
FLC	0.22		
BWC	-0.62		
ST	-0.22 Short		
SG	-0.56 Frail		
BD	-0.44 Shallow		
DF	0.59 Open		
RA	0.00 Sloped		
TW	0.84 Wide		
RLSV	0.67 Curved		
RLRV	-0.27 Hock-In		
FA	0.11 Steep		
FLS	0.30 High		
FUA	1.28 Strong		
UH	1.29 High		
UW	1.11 Wide		
UC	0.11 Strong		
UD	0.91 Shallow		
FTP	-0.10 Wide		
RTP	-0.13 Wide		
TL	0.03 Long		

LOOPING | 29H020112 | SANRECAM LOOPING

Reg. Number: 041112642319 Registry Status:
Date Of Birth: 2019-09-29
aAa: 432 DMS:
Recessives/ Haplotypes:

]] SHIMMER*RC x DELTA-BETA
]] SCHREUR SHIMMER-ET 000715952043
]] SAN-RIAN LOTERY DELTA-BETA 071111727067
CDCB HA-USA 12/2022

Production Dtrs: 0 Herds: 0
Milk: +1453 Lbs 81% Rel Beta Casein: A1/A2
Pro: +41 Lbs -0.01% Kappa Casein: BE
Fat: +39 Lbs -0.06% EFI: 9.9
FS: +205 Lbs
NMS: +812 TPI@: +2798 CMS@: +817

Health & Fertility
SCE: 1.3 63% Rel 0 Obs
DCE: 2.1 59% Rel 0 Obs
SSB: 5.3 59% Rel 0 Obs
DSB: 4.8 57% Rel 0 Obs
DPR: +0.8 76% Rel
HCR: +1.5 CCR: +1.8 LIV: +3.6
SCS: 2.66 77% Rel
PL: +6.7 76% Rel
CDN MSP 104
CDN MT 102
AHI 107
TransitionRight® ★★★★★
Bull Fertility Conv



BULL: 29H020112-Sanrecam LOOPING-10mths

Conformation Dtrs: 0 Herds: 0 PTAT Rel: 79%

PTAT	1.59		
UDC	2.18		
FLC	1.44		
BWC	-0.83		
ST	0.04 Tall		
SG	-0.68 Frail		
BD	-0.70 Shallow		
DF	0.62 Open		
RA	-1.23 High Pins		
TW	-0.01 Narrow		
RLSV	0.28 Curved		
RLRV	1.32 Straight		
FA	1.00 Steep		
FLS	1.37 High		
FUA	2.47 Strong		
UH	2.51 High		
UW	2.24 Wide		
UC	1.09 Strong		
UD	1.70 Shallow		
FTP	1.05 Close		
RTP	1.02 Close		
TL	-0.42 Short		

LUCRATIVE | 29H020633 | DENOVO 18170 LUCRATIVE-ET

Reg. Number: 003230986105 Registry Status: 99%-I
Date Of Birth: 2021-06-02
aAa: 531 DMS:
Recessives/ Haplotypes:

]] ALADDIN x ENTITY
]] DENOVO 16219 ALADDIN-ET 003204165457
]] PRECISION ENTITY LAVISH 003217643224
CDCB HA-USA 12/2022

Production Dtrs: 0 Herds: 0
Milk: +1335 Lbs 79% Rel Beta Casein: A2/A2
Pro: +53 Lbs +0.04% Kappa Casein: BB
Fat: +123 Lbs +0.24% EFI: 10.3
FS: +322 Lbs
NMS: +1156 TPI@: +3021 CMS@: +1168

Health & Fertility
SCE: 1.6 61% Rel 0 Obs
DCE: 1.9 57% Rel 0 Obs
SSB: 5.7 55% Rel 0 Obs
DSB: 3.2 55% Rel 0 Obs
DPR: -0.3 74% Rel
HCR: +2.1 CCR: +0.9 LIV: +2.9
SCS: 2.8 75% Rel
PL: +5.2 74% Rel
CDN MSP 104
CDN MT 100
AHI 106
TransitionRight® ★★★
Bull Fertility Conv



3RD DAM: Precision Delta Luxury-ET EX-90

Conformation Dtrs: 0 Herds: 0 PTAT Rel: 78%

PTAT	0.17		
UDC	0.94		
FLC	0.78		
BWC	-1.78		
ST	-1.33 Short		
SG	-1.27 Frail		
BD	-1.12 Shallow		
DF	0.66 Open		
RA	-0.10 High Pins		
TW	-0.93 Narrow		
RLSV	0.41 Curved		
RLRV	0.45 Straight		
FA	-0.47 Low		
FLS	0.51 High		
FUA	0.15 Strong		
UH	1.20 High		
UW	1.32 Wide		
UC	0.34 Strong		
UD	-0.32 Deep		
FTP	0.88 Close		
RTP	1.37 Close		
TL	-0.86 Short		



MARVEL | 29H019395 | OCD MARVEL-ET

Reg. Number: 003201859526 Registry Status: 99%-I
Date Of Birth: 2019-02-04
aAa: DMS:
Recessives/ Haplotypes:

]] KENOBI x DELTA
]] DE-SU 14222 KENOBI-ET 003141559616
]] OCD DELTA MENNA 34187-ET 003131668351 85
CDCB HA-USA 12/2022



DAM: OCD Delta Menna 34187-ET VG-85

Production Dtrs: 0 Herds: 0

Milk: +736 Lbs 83% Rel Beta Casein: A1/A2
Pro: +45 Lbs +0.08% Kappa Casein: BE
Fat: +74 Lbs +0.16% EFI: 10.4
FS: +173 Lbs
NMS: +794 TPI@: +2758 CMS\$: +809

Health & Fertility

SCE: 1.9 91% Rel 321 Obs
DCE: 2.4 70% Rel 0 Obs
SSB: 5.3 82% Rel 265 Obs
DSB: 4.5 64% Rel 0 Obs
DPR: -0.4 78% Rel
HCR: -0.4 CCR: +0.2 LIV: +0.5
PL: +4.1 79% Rel
CDN MSP 101
CDN MT 104
AHI 105
TransitionRight® ★★★★★
Bull Fertility Conv ★★★★★

Conformation

Dtrs: 0 Herds: 0 PTAT Rel: 82%

PTAT	1.57		
UDC	1.46		
FLC	0.22		
BWC	0.53		
ST	-0.16 Short		
SG	0.58 Strong		
BD	0.12 Deep		
DF	-0.17 Tight		
RA	-0.32 High Pins		
TW	0.34 Wide		
RLSV	-0.81 Straight		
RLRV	-0.18 Hock-In		
FA	0.92 Steep		
FLS	0.24 High		
FUA	1.86 Strong		
UH	1.79 High		
UW	1.53 Wide		
UC	-0.25 Weak		
UD	1.42 Shallow		
FTP	-0.25 Wide		
RTP	-0.21 Wide		
TL	0.37 Long		

MASERATI-P | 29H020542 | WINSTAR MASERATI-P-ET

Reg. Number: 003224809740 Registry Status: 99%-I
Date Of Birth: 2021-02-24
aAa: 432 DMS:
Recessives/ Haplotypes:

]] MENDEL-P x CRIMSON
]] WINSTAR MENDEL-P-ET 003208037185
]] WINSTAR ADRENALINE-ET 003203025188 83
CDCB HA-USA 12/2022



DAM: Winstar Adrenaline-ET GP-83

Production Dtrs: 0 Herds: 0

Milk: +718 Lbs 79% Rel Beta Casein: A2/A2
Pro: +44 Lbs +0.08% Kappa Casein: AB
Fat: +126 Lbs +0.34% EFI: 9.9
FS: +154 Lbs
NMS: +1140 TPI@: +2987 CMS\$: +1158

Health & Fertility

SCE: 1.7 61% Rel 0 Obs
DCE: 1.8 59% Rel 0 Obs
SSB: 5.3 57% Rel 0 Obs
DSB: 3.6 57% Rel 0 Obs
DPR: +0.9 74% Rel
HCR: +1.5 CCR: +2.6 LIV: +4
PL: +6.4 74% Rel
CDN MSP 100
CDN MT 100
AHI 108
TransitionRight® ★★★★★
Bull Fertility Conv



Conformation

Dtrs: 0 Herds: 0 PTAT Rel: 78%

PTAT	0.18		
UDC	0.75		
FLC	-0.72		
BWC	-1.43		
ST	-0.43 Short		
SG	-0.99 Frail		
BD	-0.81 Shallow		
DF	0.94 Open		
RA	0.15 Sloped		
TW	-0.64 Narrow		
RLSV	0.56 Curved		
RLRV	-1.10 Hock-In		
FA	-0.65 Low		
FLS	-0.65 Low		
FUA	0.75 Strong		
UH	0.59 High		
UW	0.93 Wide		
UC	0.24 Strong		
UD	0.64 Shallow		
FTP	0.45 Close		
RTP	0.49 Close		
TL	-1.08 Short		

MATRIARCH | 29H019286 | NO-FLA MATRIARCH

Reg. Number: 003139069324 Registry Status: 98%-NA
Date Of Birth: 2018-10-14
aAa: 351 DMS:
Recessives/ Haplotypes:

]] MEDLEY x BARCLAY
]] ABS MEDLEY-ET 003128557570
]] NO-FLA BARCLAY MIA 44908-ET 003139067472 87
CDCB HA-USA 12/2022

Production Dtrs: 16 Herds: 6

Milk: +746 Lbs 86% Rel Beta Casein: A2/A2
Pro: +34 Lbs +0.04% Kappa Casein: AB
Fat: +79 Lbs +0.18% EFI: 9.5
FS: +94 Lbs
NMS: +931 TPI@: +2756 CMS\$: +947

Health & Fertility

SCE: 1.2 97% Rel 2012 Obs
DCE: 2.2 86% Rel 12 Obs
SSB: 5.6 94% Rel 1827 Obs
DSB: 5.5 83% Rel 10 Obs
DPR: +1.2 78% Rel
HCR: +0.9 CCR: +2 LIV: +5.4
PL: +7.6 81% Rel
CDN MSP 95
CDN MT 97
AHI 107
TransitionRight® ★★★★★
Bull Fertility Conv ★



Conformation

Dtrs: 0 Herds: 0 PTAT Rel: 80%

PTAT	-0.56		
UDC	0.20		
FLC	0.35		
BWC	0.16		
ST	-1.00 Short		
SG	-0.20 Frail		
BD	-1.08 Shallow		
DF	-1.73 Tight		
RA	-1.21 High Pins		
TW	-1.15 Narrow		
RLSV	-0.73 Straight		
RLRV	0.42 Straight		
FA	-0.12 Low		
FLS	0.06 High		
FUA	0.54 Strong		
UH	-0.48 Low		
UW	0.01 Wide		
UC	-0.74 Weak		
UD	0.57 Shallow		
FTP	-0.28 Wide		
RTP	-0.91 Wide		
TL	-0.10 Short		



MIRAMAR-P | 29H020845 | DENOVO 18771 MIRAMAR-P-ET



Reg. Number: 003238258802 Registry Status: 99%-I
 Date Of Birth: 2021-11-18
 aAa: 423 DMS:
 Recessives/ Haplotypes:

]] MENDEL-P x MONUMENT-P
]] WINSTAR MENDEL-P-ET 003208037185
]] DENOVO MONUMENT-P 3539-ET 003127591137
 CDCB HA-USA 12/2022



4TH DAM: Bomaz Numero Uno 5904-ET EX-90

Production			Dtrs: 0 Herds: 0	
Milk: +777 Lbs	79% Rel	Beta Casein: A1/A2		
Pro: +45 Lbs	+0.07%	Kappa Casein: AE		
Fat: +133 Lbs	+0.36%	EFI: 9.6		
FS: +110 Lbs				
NMS: +1120	TPI@: +3047	CMS@: +1135		
Health & Fertility				
SCE: 2	61% Rel		0 Obs	
DCE: 1.8	58% Rel		0 Obs	
SSB: 5.2	56% Rel		0 Obs	
DSB: 4.4	56% Rel		0 Obs	
DPR: +0.2	73% Rel			
HCR: +1.7	CCR: +1.1	LIV: +4.1		
SCS: 2.84	75% Rel			
PL: +5.6	74% Rel			
CDN MSP	104			
CDN MT	97			
AHI	93			
TransitionRight®	★★			
Bull Fertility Conv				

Conformation Dtrs: 0 Herds: 0 PTAT Rel: 77%

Conformation	Value	Target	Deviation
PTAT	0.83		
UDC	1.66		
FLC	-0.16		
BWC	-1.37		
ST	-0.29 Short		
SG	-0.97 Frail		
BD	-0.80 Shallow		
DF	1.20 Open		
RA	0.07 Sloped		
TW	0.13 Wide		
RLSV	1.01 Curved		
RLRV	-0.52 Hock-In		
FA	-0.07 Low		
FLS	-0.09 Low		
FUA	1.70 Strong		
UH	1.85 High		
UW	1.83 Wide		
UC	0.67 Strong		
UD	1.29 Shallow		
FTP	0.70 Close		
RTP	0.88 Close		
TL	-1.01 Short		

MONK | 29H020349 | TIRSVAD 3STAR ZAZZLE MONK-ET

Reg. Number: 002468006350 Registry Status:
 Date Of Birth: 2021-09-14
 aAa: DMS:
 Recessives/ Haplotypes:

]] ALTAZAZZLE x PURSUIT
]] PEAK ALTAZAZZLE-ET 003200824445
]] TIRSVAD K&L PURSUIT MILANO ET 002371403181
 CDCB HA-USA 12/2022



DAM: Tirsvad K&L Pursuit Milano DK2371403181-2yrs

Production			Dtrs: 0 Herds: 0	
Milk: +486 Lbs	80% Rel	Beta Casein: A1/A2		
Pro: +41 Lbs	+0.09%	Kappa Casein: AB		
Fat: +99 Lbs	+0.28%	EFI: 10.4		
FS: +86 Lbs				
NMS: +929	TPI@: +2920	CMS@: +952		
Health & Fertility				
SCE: 2.3	63% Rel		0 Obs	
DCE: 2.2	62% Rel		0 Obs	
SSB: 6.6	60% Rel		0 Obs	
DSB: 5.1	60% Rel		0 Obs	
DPR: -0.5	74% Rel			
HCR: +0.2	CCR: +0.2	LIV: +1.5		
SCS: 2.6	75% Rel			
PL: +5.4	74% Rel			
CDN MSP	104			
CDN MT	101			
AHI	103			
TransitionRight®	★★★			
Bull Fertility Conv				

Conformation Dtrs: 0 Herds: 0 PTAT Rel: 77%

Conformation	Value	Target	Deviation
PTAT	1.30		
UDC	1.78		
FLC	0.85		
BWC	0.04		
ST	0.21 Tall		
SG	-0.16 Frail		
BD	-0.50 Shallow		
DF	-0.11 Tight		
RA	-0.68 High Pins		
TW	0.55 Wide		
RLSV	-0.50 Straight		
RLRV	0.69 Straight		
FA	1.01 Steep		
FLS	0.87 High		
FUA	2.42 Strong		
UH	2.00 High		
UW	1.38 Wide		
UC	0.61 Strong		
UD	2.21 Shallow		
FTP	0.14 Close		
RTP	0.36 Close		
TL	0.86 Long		

MULBERRY-P | 29H020526 | DENOVO 17852 MULBERRY-P-ET



Reg. Number: 003230985787 Registry Status: 99%-I
 Date Of Birth: 2021-03-04
 aAa: DMS:
 Recessives/ Haplotypes:

]] MENDEL-P x MEDLEY
]] WINSTAR MENDEL-P-ET 003208037185
]] DENOVO MEDLEY 7517-ET 003141494103
 CDCB HA-USA 12/2022



Production			Dtrs: 0 Herds: 0	
Milk: +672 Lbs	80% Rel	Beta Casein: A2/A2		
Pro: +47 Lbs	+0.09%	Kappa Casein: AB		
Fat: +118 Lbs	+0.32%	EFI: 9.9		
FS: +145 Lbs				
NMS: +1015	TPI@: +2957	CMS@: +1030		
Health & Fertility				
SCE: 1.5	61% Rel		0 Obs	
DCE: 1	59% Rel		0 Obs	
SSB: 5.2	56% Rel		0 Obs	
DSB: 4.1	56% Rel		0 Obs	
DPR: -0.1	74% Rel			
HCR: +2	CCR: +1.6	LIV: +3.1		
SCS: 3.01	76% Rel			
PL: +4.4	74% Rel			
CDN MSP	103			
CDN MT	99			
AHI	102			
TransitionRight®	★★★			
Bull Fertility Conv				

Conformation Dtrs: 0 Herds: 0 PTAT Rel: 78%

Conformation	Value	Target	Deviation
PTAT	0.88		
UDC	1.09		
FLC	0.62		
BWC	-1.27		
ST	-0.60 Short		
SG	-0.76 Frail		
BD	-0.80 Shallow		
DF	0.90 Open		
RA	0.30 Sloped		
TW	-0.57 Narrow		
RLSV	-0.05 Straight		
RLRV	0.43 Straight		
FA	0.35 Steep		
FLS	0.46 High		
FUA	1.14 Strong		
UH	1.19 High		
UW	1.63 Wide		
UC	0.05 Strong		
UD	0.45 Shallow		
FTP	0.17 Close		
RTP	0.07 Close		
TL	-0.98 Short		



RADLEY | 29H019049 | FAIRMONT MEDLEY RADLEY

Reg. Number: 003146184829 Registry Status: 99%-I
Date Of Birth: 2018-02-28
aAa: DMS: Recessives/ Haplotypes:

]] MEDLEY x JOSUPER
]] ABS MEDLEY-ET 003128557570
]] FAIRMONT JOSUPER REGAN-ET 003132554932 80
CDCB HA-USA 12/2022



MGD: Co-Op Moonboy Rescue-ET EX-90

Production Dtrs: 69 Herds: 34
Milk: +1743 Lbs 91% Rel Beta Casein: A2/A2
Pro: +68 Lbs +0.05% Kappa Casein: BB
Fat: +71 Lbs +0.01% EFI: 9.6
FS: -135 Lbs
NMS: +786 TPI@: +2790 CMS\$: +795

Health & Fertility
SCE: 2.3 88% Rel 279 Obs
DCE: 1.8 72% Rel 52 Obs
SSB: 5.2 79% Rel 266 Obs
DSB: 4.2 66% Rel 45 Obs
DPR: -1.3 81% Rel
HCR: +0.3 CCR: -0.6 LIV: +1.5
SCS: 2.96 88% Rel
PL: +4.1 82% Rel
CDN MSP 103
CDN MT 102
AHI 108
TransitionRight® ★★★★★
Bull Fertility Conv ★★★★★

Conformation Dtrs: 35 Herds: 13 PTAT Rel: 87%

PTAT	0.95
UDC	1.00
FLC	0.77
BWC	0.38
ST	0.37 Tall
SG	0.31 Strong
BD	-0.27 Shallow
DF	-0.01 Tight
RA	-0.52 High Pins
TW	0.51 Wide
RLSV	-0.18 Straight
RLRV	1.02 Straight
FA	0.68 Steep
FLS	0.74 High
FUA	0.86 Strong
UH	1.08 High
UW	2.07 Wide
UC	0.64 Strong
UD	0.42 Shallow
FTP	0.46 Close
RTP	0.32 Close
TL	-0.29 Short

SPOCK | 29H018182 | ROSYLANE-LLC SPOCK-ET

Reg. Number: 003013115112 Registry Status: 99%-I
Date Of Birth: 2015-04-10
aAa: 342 DMS: 345,135 Recessives/ Haplotypes:

]] SILVER x SUPERSIRE
]] SEAGULL-BAY SILVER-ET 000072156794
]] ROSYLANE-LLC SPSIRE 7055-ET 000072146733
IB-M/USA HA-USA 12/2022



DTR: ABS Spock 7819-ET, De Novo Genetics LLC, New Albin, IA

Production Dtrs: 9354 Herds: 1318
Milk: +82 Lbs 99% Rel Beta Casein: A1/A1
Pro: +22 Lbs +0.07% Kappa Casein: AB
Fat: +99 Lbs +0.34% EFI: 10.6
FS: -138 Lbs
NMS: +579 TPI@: +2607 CMS\$: +593

Health & Fertility
SCE: 2.1 99% Rel 5689 Obs
DCE: 1.6 97% Rel 2142 Obs
SSB: 6.1 98% Rel 5097 Obs
DSB: 4.5 97% Rel 1887 Obs
DPR: -2 98% Rel
HCR: -0.5 CCR: -1.6 LIV: -0.5
SCS: 2.83 99% Rel
PL: +1.9 99% Rel
CDN MSP 99
CDN MT 98
AHI 114
TransitionRight® ★★★★★
Bull Fertility Conv ★★★★★

Conformation Dtrs: 1283 Herds: 328 PTAT Rel: 96%

PTAT	0.81
UDC	0.78
FLC	1.26
BWC	0.74
ST	-0.15 Short
SG	1.01 Strong
BD	0.65 Deep
DF	-0.05 Tight
RA	-1.08 High Pins
TW	-0.16 Narrow
RLSV	0.16 Curved
RLRV	1.76 Straight
FA	0.83 Steep
FLS	0.98 High
FUA	1.03 Strong
UH	0.73 High
UW	0.94 Wide
UC	0.42 Strong
UD	0.53 Shallow
FTP	0.13 Close
RTP	0.16 Close
TL	-0.38 Short

ZAZ | 29H020331 | KOEPON ZAZ 2167 RF-ET



Reg. Number: 000577621671 Registry Status:
Date Of Birth: 2021-05-27
aAa: 243 DMS: Recessives/ Haplotypes:

]] ALTAZAZZLE x ALTAALTUVE*RC
]] PEAK ALTAZAZZLE-ET 003200824445
]] KOEPON ALTUVE RANGE 5-RED 000682612526
CDCB HA-USA 12/2022

Production Dtrs: 0 Herds: 0
Milk: +694 80% Rel Beta Casein: A1/A1
Lbs
Pro: +42 Lbs +0.07% Kappa Casein: BB
Fat: +94 Lbs +0.23% EFI: 10.1
FS: +22 Lbs
NMS: +909 TPI@: +2911 CMS\$: +926

Health & Fertility
SCE: 1.5 63% Rel 0 Obs
DCE: 1.5 61% Rel 0 Obs
SSB: 5.7 60% Rel 0 Obs
DSB: 4.2 60% Rel 0 Obs
DPR: -0.1 74% Rel
HCR: +1.9 CCR: +0.9 LIV: +2.5
SCS: 2.75 76% Rel
PL: +5.3 75% Rel
CDN MSP 96
CDN MT 100

Conformation Dtrs: 0 Herds: 0 PTAT Rel: 78%

PTAT	1.35
UDC	1.71
FLC	0.84
BWC	-0.29
ST	0.98 Tall
SG	-0.10 Frail
BD	-0.07 Shallow
DF	1.10 Open
RA	0.02 Sloped
TW	0.47 Wide
RLSV	-0.09 Straight
RLRV	0.89 Straight
FA	0.79 Steep
FLS	1.02 High
FUA	1.87 Strong
UH	2.44 High
UW	2.19 Wide
UC	0.57 Strong
UD	1.48 Shallow
FTP	0.80 Close
RTP	0.57 Close
TL	-0.16 Short



Profit From Genetic Progress



Genus ABS Products & Services:



Artificial
Insemination



Dairy & Beef
Genetics



Reproductive
Management



Genetic
Services



Udder Care
Products



Forage
Inoculants



Sexed
Genetics



Fertility
Advice



Genomic
Testing



Find out more at:
www.absglobal.com/uk





South Africa
Profit From Genetic Progress

ABS South Africa 021 9754191 ABS-South-Africa-Admin@genusplc.com

Thank you for your consideration.

ABSBULLSEARCH.ABSGLOBAL.COM