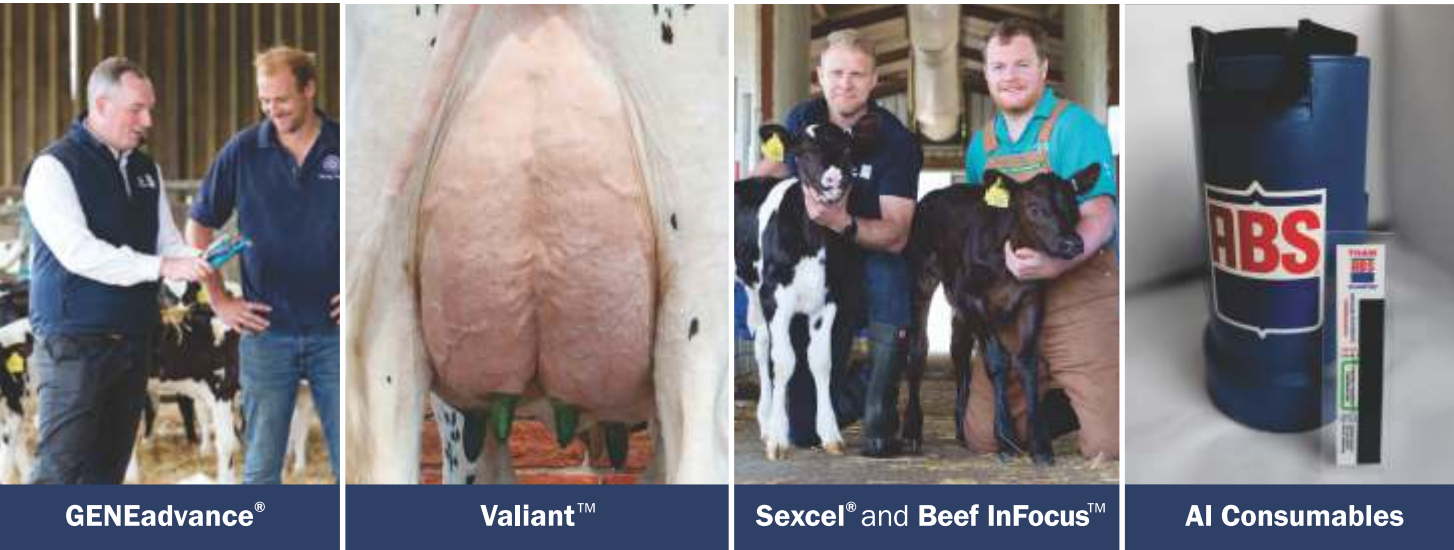


Genetics For Tomorrow



Everything you need



GENEadvance®

Valiant™

Sexcel® and Beef InFocus™

AI Consumables

Contact Us Today

Sales & Services

Western Cape: Martin Visser - 079 878 4310

Eastern Cape: Dale Bryce-Borthwick - 082 353 2991

MC Steyn - 082 809 2999

Southern Cape: Christiaan Swart - 082 324 1133

KwaZulu Natal: Kirstin McCabe - 076 566 3101

Donneè Murray - 076 101 7145

Denton Knight - 076 555 9292

Gauteng/Free State: Nico Pretorius - 072 944 0229

Administration

Head Office: 021 975 4191

SA General Manager: Serena Lombaard - 082 922 9341

ABS South Africa, Unit B5, Prestige Park, Stillewater Street, Durbanville Industria, Cape Town, 7550

www.absglobal.com/za | ABS-South-Africa-Admin@genusplc.com



It is the responsibility of the purchaser to make themselves aware of ABS South Africa's full Terms and Conditions. These can be found at <https://www.absglobal.com/za/terms-conditions/> or are available by contacting ABS head office on 021 975 4191 or your local sales representative.

BEST OF BOTH

GENETIC DIRECTORY

Optimise Your Herd with
ABS's Trusted Grassland Genetics



South Africa

Profit From Genetic Progress

Build Your Own Winning Game Plan

The Winning Game Plan is a simple yet incredibly effective joining program.

By using Sexcel®, you can generate all replacements from the highest performing animals in your herd and convert beef calves into high-value beef cattle with Beef InFocus™.

The following sires are ready to be used in your Winning Game Plan.



HEREFORD	
829HP0939	PROTEUS
SIMMENTAL	
829SM0486	INFERNO
ANGUS	
829XB0072	NUERA T14 0072
829XB0155	NUERA T14 0155

HOLSTEIN		PAGE #
629H019403	HAWKEYE	14
629H020359	DECKER	11
629H018772	ATRIUM	17
629H019433	CABO	10
FRIESIAN		
629H020365	COVERACK	33
629H020177	EPIC	34
JERSEY		
629JE4117	WESTPORT {5}	26
629JE4276	BAZZAR {5}	22

RSG ROCK SOLID GENETICS
Sire has at least 100 daughters, which provides stable type and production proofs over time

ABS PROVEN
Sire is proven through the ABS progeny testing system

DAUGHTER FERTILITY
Sire whose daughters show improved fertility

DIAMOND SIRE
Sire has at least 1000 milking daughters, which recognises outstanding reliability and ensuring genetic accuracy

SEXCEL® ONLY
At the time of publication, only Sexcel® semen is available for these sires.

ICON SIRE
Sires in our Icon Sire program offer the very best genetics from our breeding program. To get early access to these genetics, you will be required to sign our Terms and Conditions, which will also give you the potential opportunity to receive a good price for the progeny of Icon Sires that come back in the ABS breeding program. For more information, please refer to <https://www.absglobal.com/za/terms-conditions/>

PREGNANCY KING
Sire has high semen fertility based on actual observations and Real World Data®

GENOMIC VALUE
Sire is yet to be proven, possesses desirable genomic values

A2A2
Sire possesses A2A2 gene for beta casein

CHEESE MAKER
Sire whose production values are ideal for cheese markets.

GRAZING KING
Sire scores well on desirable traits for grazing systems by having low stature, high fertility and positive locomotion.

KAPPA CASEIN BB
Sire possesses BB gene for kappa casein which help in the cheese making process. Cheese from the milk of BB cows clots 25% faster and is twice as firm as cheese from AA cow's milk.

FEED EFFICIENCY
Sire breeds more efficient, profitable cows for increased income over feed cost

CALVING EASE
Sire has superior calving ease based on actual observations

POLLED
PP = True polled
P = Polled

HIGH TYPE
Sire has high type traits and will produce offspring of superior conformation

UK PROOF
Sire with a proof based on UK milking daughters.

Is it more beneficial to have a smaller Holstein?



FEED ADVANTAGE

Creating smaller Holsteins

Helps dairy producers identify bulls with the greatest tendency to transmit good feed conversion onto their daughters, expressed as a PTA in kilograms of dry matter intake saved during each lactation.

Is it more beneficial to have a large or a small Holstein?

This has been a debate amongst farmers for many years. Many farmers believe that larger animals have more to offer due to their bigger body size, which in turn would mean they eat more food and therefore produce more milk. *But is that the right way of thinking?*

In the past, a smaller cow may have been less desirable in some ways. However, data capture has proved that their decreased size enhances their efficiency, in turn making them more profitable and sustainable. Research has found that smaller cows consume significantly less feed than their larger comparisons, due to their reduced size.

For a cow to produce and function in a healthy way, they need to consume at least 2% of their total bodyweight in feed, resulting in less feed required for a smaller cow and saving the farmer money overall.

Saving money on feed isn't the only benefit when it comes to smaller Holsteins. You may be thinking: "What about milk?" Which would be every farmer's concern. However, research has found that these smaller, more efficient cows, with the right genetics, can actually produce the same amount of milk as larger animals, and live a longer productive life.



WHAT IS

FEED ADVANTAGE

The Feed Advantage index calculates feed efficiency.

It was designed to help you to pick the bulls that are most likely to pass on their impressive feed conversion traits to their offspring.

Ideally, you want a cow that eats less, but gives the same amount of production as one who eats a lot. Simultaneously, you don't want the health of the animal, or its longevity, to be affected.

It has been scientifically proven by global data; including information from the UK, that some animals can convert their food better than others.

How is it Sustainable?

Smaller, more productive cows produce less methane, over their lifetime. Methane, which can be harmful to the environment, is produced and released from the cow when they are ruminating. A smaller cow, which eats less food, will therefore produce less methane.

Not only is it sustainable for the environment, having smaller Holsteins is also sustainable for you and your wallet.

With less feed to pay for, you could save yourself £500 per cow, per lifetime. Not only that; your smaller, more efficient cow will live a much longer productive life.

This means you won't have to rear as many replacements, which would have a negative impact on your carbon footprint.





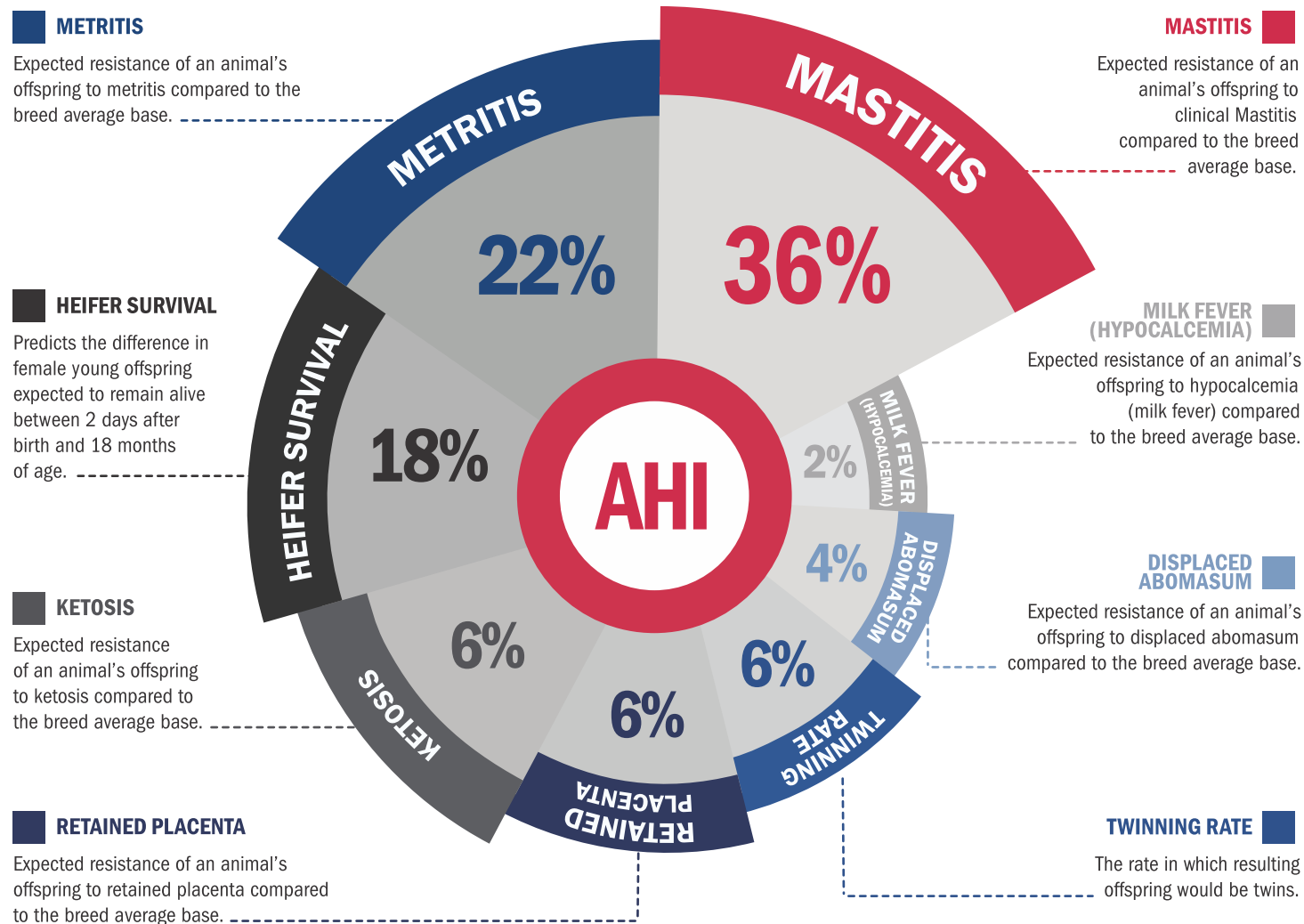
ABS HEALTH INDEX

COMBINING SCIENCE AND DATA TO CREATE HEALTHIER ANIMALS

As a dairy producer, you have a lot of things on your mind, including the health of your animals. Health plays a crucial role in your success and sustainability. We understand that many factors influence the health of an animal, including genetics. Today, you can analyze **several disease-related traits** that predict the animal's susceptibility.

With all the unique traits, making a sound decision can be confusing and overwhelming. Therefore, ABS developed a tool for producers to use to simplify selection for health in their genetic plan. The ABS Health Index (AHI) combines **eight related health events into a single simple metric** based on overall impact. Unlike other health and wellness indexes, we give you the flexibility through a Custom Index to control the amount of emphasis you desire for health traits in your genetic plan. Take a deeper look into AHI below.

DISEASE-RELATED TRAITS EVALUATED IN THE ABS HEALTH INDEX



CONFIDENCE IN THE DATA AND EXPERTISE

Through commercial herds across the globe, ABS examines several million animal records, and we continue to collect more data to validate our genetics and services. The database that supports AHI has an average **herd size of 1,500 cows** which allows for more confidence and less noise than with small data sets. Let's take the trait Mastitis as an example. The sheer size and quality of our database allows us to create tools that provide dairy producers with information that they can trust. For the collective group of active ABS daughter proven sires, we have nearly 60 percent more records in our database compared to the Council on Dairy Cattle Breeding (CDCB).

While data is important, **our people truly make the difference**. Our team of geneticists are no exception to this rule. To provide you with the best information to make data driven decisions, we must have a team with the expertise to analyze and publish the data to the highest of standards.

THE TEAM BEHIND AHI

Our team who works with our data and publishes the ABS Health Index has more than 50 years of genetic experience and have previously worked at globally renowned evaluation centers like USDA, CDCB, Canada Dairy Network (CDN), and the Irish Cattle Breeding Federation.

What do the AHI Values mean?

AHI will be displayed with an average of 100 and a standard deviation of 5 across a global bull population. The average is calculated by being leveraged from the ABS Real World Database and CDCB population of sires.

Example: A bull with an AHI value of 105 is one standard deviation better than the average bull. A bull with a score of 105 would be superior to 84% of all bulls. A bull with a score of 110 would be superior to 97.7% of all bulls.

Fine tune your herd's health requirements and profit by using high AHI Sires today.

		AHI
29H018878	HOWLER	114
29H018182	SPOCK	113
29H018296	ACHIEVER	111
29H020359	DECKER	110
29H019403	HAWKEYE	108
29H021018	ANZAC-PP	108
29H019049	RADLEY	106
29H020928	DAPPER	106
29H021111	ESPARTO	106



Twining Rate and Heifer Survival are two brand **NEW** traits to the industry. Farmers around the world are drafting this winning plan with ABS.

Twining Rate – The world's first genomic evaluation to allow a lower rate of producing twin calves.

Heifer Survival – Reduces the risk of heifer mortality between 3 days and 18 months of age.

Health traits are key in a dairy operation due to their direct impact on **milk production, reproductive performance, animal welfare, veterinary costs, and overall sustainability**. By focusing on maintaining the health and well-being of your cows, you can optimize productivity, ensure high-quality products, and uphold the values that are important to consumers and our industry.

Manage disease-related traits on your dairy with one simple metric by using the ABS Health Index.

HOLSTEIN

NAAB	CODE NAME	SEXCEL	NM\$	TPI®	CM\$	FM\$	GM\$	MILK	PRO	FAT	CFP	PRO%	FAT%	FS	PL	LIV	SCS	DPR	HCR	CCR	AHI	PTAT	UDC	FLC	SCE	ST	SG	BULL FERT.	TRANSITION RIGHT®	POLLED	BETA CASEIN	PEDIGREE	% BLACK	PAGE
PROVEN SIRES																																		
29HO18296	ACHIEVER		944	2768	965	818	877	798	27	115	142	0.09	0.4	347	4.2	3.1	2.65	-2.2	1.3	-1	111	0.13	0.9	0.35	1.7	-1.47	-1.43	****	★★★		A2/A2	YODER x ALTAEMBASSY	0-25	9
29HO19433	CABO	Sexcel	922	2864	939	796	889	989	53	98	151	0.09	0.22	158	3.9	2.4	2.87	-0.5	0.6	0.1	93	0.71	1.11	0.95	1.6	-0.11	-0.31	***	★★		A1/A2	ENTITY x VERONA	75-100	10
29HO19403	HAWKEYE	Sexcel	862	2753	875	800	807	586	40	78	118	0.04	0.14	58	5.8	3.2	2.7	0.3	2.3	1.9	108	0.14	0.82	-0.11	1.6	-0.72	-0.07	****	★★★★		A2/A2	AMAZON x FRAZZLED	25-49	14
29HO19395	MARVEL		828	2766	846	702	771	171	44	75	119	0.09	0.18	181	4.8	0.7	2.81	-0.6	-0.5	0.1	104	1.48	1.46	0.1	1.9	-0.27	0.35	****	★★★		A1/A2	KENOBI x DELTA	0-25	15
29HO19049	RADLEY		799	2782	810	713	711	713	69	67	136	0.05	0	-65	4.2	1.6	2.89	-1.7	0	-0.8	106	1.03	1.05	0.78	2.3	0.43	0.36	***	★★★★		A2/A2	MEDLEY x JOSUPER	25-49	16
29HO18878	HOWLER		596	2525	614	503	560	487	32	48	80	0.06	0.1	142	3.6	0.8	2.63	-0.6	-0.5	1.2	114	0.62	1.11	0.17	1.9	-0.33	-0.51	***	★★★★		A2/A2	CHARLEY x DELTA	75-100	8
29HO18182	SPOCK		575	2611	590	474	520	87	23	98	121	0.07	0.34	-136	1.6	-0.8	2.82	-1.9	-0.6	-1.7	113	0.82	0.82	1.13	2.1	-0.13	1.02	*****	★★★★		A1/A1	SILVER x SUPERSIRE	75-100	16

GENOMIC SIRES																																		
29HO20573	MEADOW-PP	Sexcel	957	2894	975	820	918	150	33	117	150	0.1	0.39	86	4.9	4.2	2.89	-0.1	1.6	1.7	102	0.74	1.22	0.57	1.4	-0.68	-0.48	**	★★★	YES	A1/A2	MENDEL-P x ACURA x DELTA	0-25	16
29HO19864	HASHTAG	Sexcel	899	2915	906	873	850	1207	40	104	144	0.01	0.2	156	4.3	0.8	2.75	-1.1	2.7	0.2	100	1.96	1.98	0.94	2	0.39	0.27		★★★		A2/A2	FASTBALL x DELTA x HILLS DAYS	75-100	14
29HO19894	GILLIGAN	Sexcel	863	2797	873	815	836	1001	39	82	121	0.03	0.15	8	5.5	3.6	2.79	1.1	2.2	2.9	104	0.64	1.12	-0.59	1.8	-0.27	-0.24		★★★★		A2/A2	GALILEO x SASSAFRAS x TOPSHOT	75-100	13
29HO19854	BOVEC50	Sexcel	802	2791	824	657	756	541	45	71	116	0.1	0.18	-71	5.2	2.1	2.68	0.6	-0.6	1.5	105	0.96	1.57	-0.21	1.6	-0.02	0.26	**	★★★★		A2/A2	GALILEO x KENOBI x DELTA	75-100	10
29HO21090	DODGER		1192	3067	1197	1177	1134	1889	59	100	159	0	0.09	340	7.5	4	2.85	0.2	1.6	1.4	102	1	1.43	0.93	2.3	-1.41	-0.98		★★★		A2/A2	DUFFY x FASTBALL x YODA	75-100	13
29HO21300	DIOXIDE		1142	2998	1151	1099	1108	1375	49	92	141	0.02	0.13	371	7.7	3.7	2.77	1.3	1.8	2.3	104	0.6	1.48	0.8	1.5	-1.58	-0.99		★★★★		A1/A2	DUFFY x HERITAGE x MARIUS	50-74	12
29HO20928	DAPPER		1076	3005	1092	947	1043	992	57	112	169	0.09	0.25	185	5.5	2.7	2.95	0.1	2.4	1.1	106	1.01	1.15	0.61	2	-0.59	-0.42		★★★		A2/A2	DUFFY x ADMIRAL x JOSUPER	25-49	11
29HO20359	DECKER	Sexcel	1061	3069	1083	923	994	529	43	105	148	0.09	0.3	95	7	2.5	2.67	0.1	0.2	1.2	110	1.83	2.39	1.25	1.7	-0.21	-0.71		★★★★		A2/A2	HERCULES x HEROIC x DYNAMIC	50-74	11
29HO19664	AUGUST		1025	3035	1038	933	1016	1314	58	97	155	0.06	0.16	131	5.1	2.4	2.84	0.8	4.8	2.4	102	1.31	1.81	0.43	2.2	0.61	0.12	*	★★★		A1/A2	ACURA x YODA x FLAGSHIP	25-49	9
29HO21018	ANZAC-PP		988	2948	1016	792	949	-44	39	131	170	0.14	0.47	1	4.4	3.4	2.76	-0.4	1.1	1.5	108	0.75	0.71	0.66	2.1	-0.3	0.2		★★★★	YES	A2/A2	ELVER-P x HEROIC x MEDLEY	50-74	9
29HO21111	ESPARTO		991	3034	1009	842	964	848	57	107	164	0.11	0.26	15	4.7	1.2	2.96	0.1	1.9	1.7	106	1.56	1.76	1.26	1.7	-0.02	0.68		★★★		A1/A2	PARFECT x MONTREAL x REASON	50-74	13
29HO20579	LAKESIDE		962	2809	984	834	899	639	44	76	120	0.08	0.18	253	6.6	4	2.63	0	-0.1	1.2	105	0.58	1.32	-0.1	1.6	-1.26	-1.05		★★★★		A2/A2	HERITAGE x CRIMSON x MONTANA	50-74	15
94HO21052	DEKALB		958	2970	980	796	917	975	63	100	163	0.11	0.22	56	4.2	1.6	2.86	-0.7	2.2	0.6	105	1.47	1.4	0.43	2.1	0.83	0.7		★★★★		A2/A2	DUFFY x DULUTH x TOPSHOT	50-74	12

NAAB	SHORT NAME	SEXCEL	PLI	ACI	SCI	MILK	FAT	FAT%	PRO%	FEED ADVANTAGE	PRO	ENVIRO COW	DIRECT CE	LIFESPAN (DAYS)	DTR FERTILITY	GEST LEN (D)	SCC	LAMENESS	DIGITAL DERMATITIS	CALF SURVIVAL	MAMMARY	LEGS & FEET	AHI	STATURE	CHEST WIDTH	MAINTENANCE	BCS	TRANSITION RIGHT®	LOCOMOTION	MASTITIS	HEALTHY COW	PROV/GEN	BETA CASEIN	PAGE
Pasture Pro Genetics - Sires who produce smaller framed daughters with exceptional grazing strength and outstanding Health and Fertility figures.																																		
BRITISH BASE - AHDB Aug 2023																																		
29HO18772	ATRIUM	Sexcel	621	614	543	428	39.6	0.26	0.03	187	16.9	2.7	0	31	12.4	-1	-16	2.5	-0.2	-0.2	-0.25	0.64	101	-2.79	-0.98	-32	-0.6	★★★	0.98	0	169	P	A2/A2	17
29HO17454	INVICTUS		610	600	509	256	30.1	0.23	0.07	140	14.1	2.7	-0.5	98	9.4	-1	-23	2.9	0.4	1.5	1.36	0.5	114	-1.88	-1.67	-26	-0.04	★★★★★	1.04	-2	235	P	A2/A2	17
29HO20144	DOMINATOR		613	560	470	393	40.1	0.28	0.04	179	16.6	3	1.1	76	6.9	0	-11	2.5	0.2	0.1	0.74	-0.14	107	-1.95	-0.36	-19	0.18	★★★	0.01	-1	154	G	A2/A2	17

TRAIT LEADERS

Data from CDCB (August 2023)

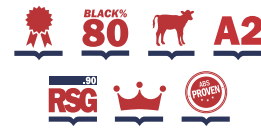
FERTILITY	CALVING EASE	MILK	FAT	PROTEIN	UDDERS (UDC)	DAUGHTER FERTILITY
SPOCK	CABO	DODGER	ANZAC PP	RADLEY	DECKER	GILLIGAN
ACHIEVER	HAWKEYE	RADLEY	MEADOW PP	DEKALB	HASHTAG	DIOXIDE
HAWKEYE	MEADOW PP	DIOXIDE	ACHIEVER	DODGER	AUGUST	AUGUST

HOWLER

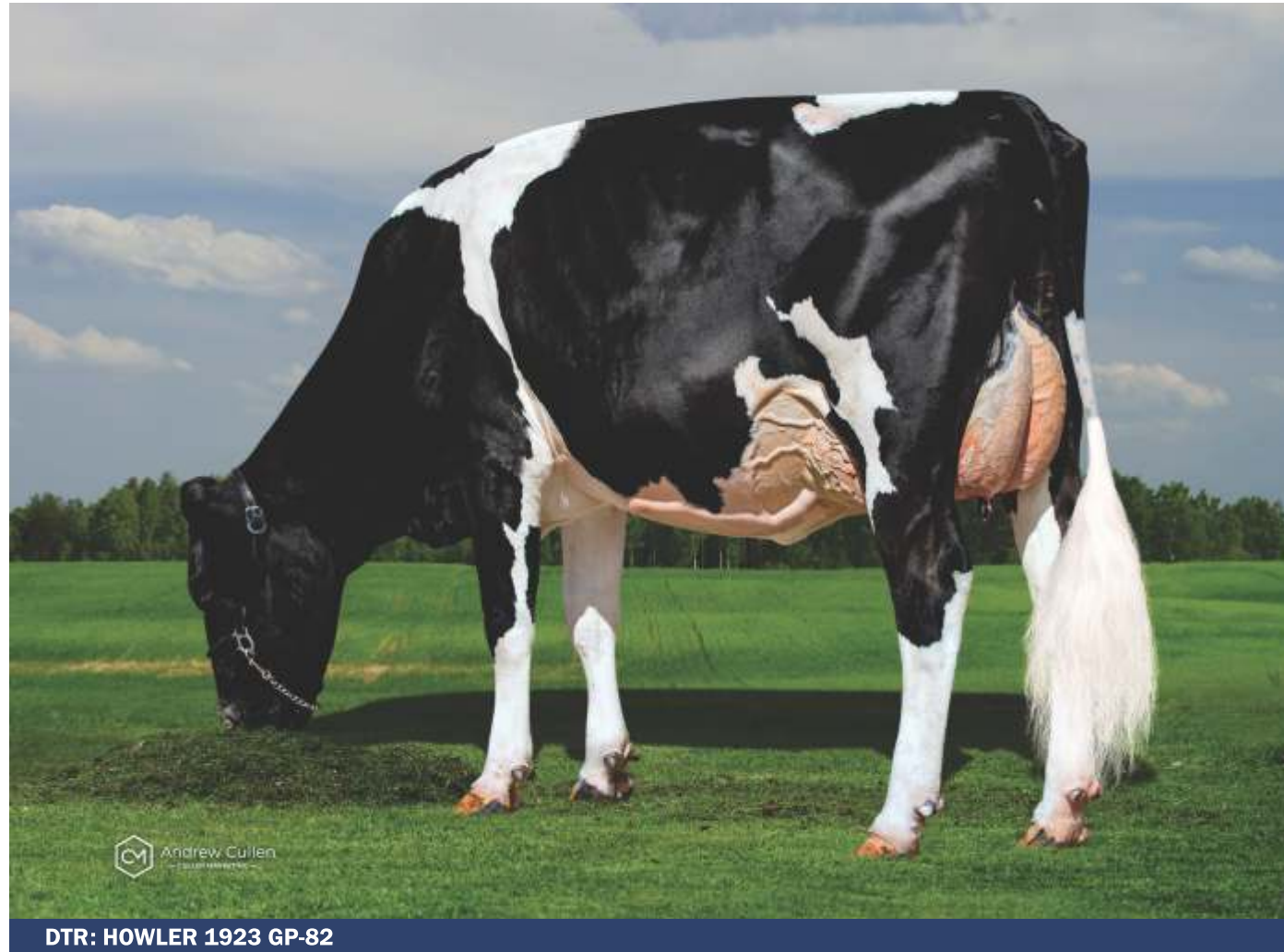
CHARLEY x DELTA x SUPERSIRE

PINE-TREE HOWLER-ET

Bull ID: 29H018878



ABS PROVEN
NM\$ +596 **CM\$ +614** **GM\$ +560**



DTR: HOWLER 1923 GP-82

- Elite Semen Fertility
- Now Proven
- Exceptional Dairy Strength
- Improves Mastitis Resistance
- Crossbreeding Specialist

Conformation

Dtrs: 215 Herds: 80 PTAT Rel: 94%

		-2	-1	0	1	2
PTAT	0.62					
UDC	1.11					
FLC	0.17					
BWC	-0.63					
ST	-0.33	Short				
SG	-0.51	Frail				
BD	-0.40	Shallow				
DF	0.66	Open				
RA	0.00	Sloped				
TW	0.90	Wide				
RLSV	1.06	Curved				
RLRV	-0.34	Hock-In				
FA	0.00	Steep				
FLS	0.25	High				
FUA	1.19	Strong				
UH	1.30	High				
UW	1.04	Wide				
UC	0.48	Strong				
UD	0.77	Shallow				
FTP	-0.09	Wide				
RTP	0.34	Close				
TL	0.01	Long				

Production

Dtrs: 1858 Herds: 344 NM\$: +596 TPI@: +2525

Milk	+487 Lbs	98% Rel
Pro	+32 Lbs	+0.06%
Fat	+48 Lbs	+0.10%
FS	+142 Lbs	
CM\$	+614	
GM\$	+560	
FMS	+503	
Health & Fertility		
PL	+3.6	93% Rel
LIV	+0.8	81% Rel
DPR	-0.6	93% Rel
SCS	2.63	97% Rel
HCR	-0.5	89% Rel
CCR	+1.2	92% Rel
CDN MSP	95	
CDN MT	98	
AHI	114	
Recessives HH1T, HH2T, HH3T, HH4T, HH5T, HH6T, MWT, TC, TD, TL, TN, TR, TV, TY		
Calving Traits		
SCE	1.9%	97% Rel 6069 Obs
DCE	1.7%	90% Rel 965 Obs
SSB	5.4%	93% Rel 5955 Obs
DSB	5.2%	91% Rel 909 Obs



PINE-TREE HOWLER-ET



South Africa

HOLSTEINS

ACHIEVER | 29H018296 | ABS ACHIEVER-ET

YODER x ALTAEMBASSY x ROBUST

- Elite semen fertility
- Elite mastitis resistance
- Feed Saved Specialist

Reg. Number: 00312857482 Registry Status: 99%-NA

Date of Birth: 2015-11-15

Recessives

HH1T, HH2T, HH3T, HH4T, HH5C, HH6T, MWT, TC, TD, TL, TN, TV, TY



DTR: Winstar Achiever Model-ET VG-85



IB-M/USA HA-USA 08/2023

Dtrs: 12376 Herds: 1788

Production		
Milk: +79 Lbs	99% Rel	Beta Casein: A2/A2
Pro: +27 Lbs	+0.09%	Kappa Casein: BB
Fat: +115 Lbs	+0.40%	EFI: 11.1
FS: +347 Lbs		
NM\$: +944	TPI@: +2768	CM\$: +965

Health & Fertility

SCE: 1.7	99% Rel	17763 Obs
DCE: 2.1	99% Rel	5626 Obs
SSB: 5.1	99% Rel	19418 Obs
DSB: 4.7	99% Rel	6090 Obs
DPR: -2.2	99% Rel	
HCR: +1.3	CCR: -1	LIV: +3.1
SCS: 2.65	99% Rel	
PL: +4.2	99% Rel	
CDN MSP	102	
CDN MT	99	
AHI	111	
TransitionRight®	★★★★	
Bull Fertility Conv	★★★★★	

Conformation

Dtrs: 4244 Herds: 846 PTAT Rel: 99%

		-2	-1	0	1	2
PTAT	0.13					
UDC	0.90					
FLC	0.35					
BWC	-1.67					
ST	-1.47	Short				
SG	-1.43	Frail				
BD	-1.05	Shallow				
DF	0.10	Open				
RA	-0.80	High Pins				
TW	-0.98	Narrow				
RLSV	-0.78	Straight				
RLRV	-0.03	Hock-In				
FA	-0.90	Low				
FLS	0.11	High				
FUA	0.69	Strong				
UH	0.71	High				
UW	0.17	Wide				
UC	0.10	Strong				
UD	0.41	Shallow				
FTP	1.00	Close				
RTP	1.08	Close				
TL	0.04	Long				

ANZAC-PP | 29H021018 | BOMAZ ANZAC-PP-ET

ELVER-P x HEROIC x MEDLEY

- Adds dairy strength
- Adds teat length
- Lameness Improver

Reg. Number: 003245608844 Registry Status: 99%-I

Date of Birth: 2022-04-15

Recessives

HH1T, HH2T, HH3T, HH4T, HH5T, HH6T, MWT, PP, TC, TD, TL, TN, TR, TS, TV, TY



BULL: 29H021018 Bomaz ANZAC-PP-ET



CDCB HA-USA 08/2023

Dtrs: 0 Herds: 0

Production		
Milk: -44 Lbs	79% Rel	Beta Casein: A2/A2
Pro: +39 Lbs	+0.14%	Kappa Casein: BB
Fat: +131 Lbs	+0.47%	EFI: 10.2
FS: +1 Lbs		
NM\$: +988	TPI@: +2948	CM\$: +1016

Health & Fertility

SCE: 2.1	61% Rel	0 Obs
DCE: 2.4	57% Rel	0 Obs
SSB: 5.3	57% Rel	0 Obs
DSB: 4.7	55% Rel	0 Obs
DPR: -0.4	73% Rel	
HCR: +1.1	CCR: +1.5	LIV: +3.4
SCS: 2.76	75% Rel	
PL: +4.4	74% Rel	
CDN MSP	103	
CDN MT	102	
AHI	108	
TransitionRight®	★★★★	
Bull Fertility Conv		

Conformation

Dtrs: 0 Herds: 0 PTAT Rel: 78%

		-2	-1	0	1	2
PTAT	0.75					
UDC	0.71					
FLC	0.66					
BWC	-0.11					
ST	-0.30	Short				
SG	0.20	Strong				
BD	0.08	Deep				
DF	0.55	Open				
RA	-0.78	High Pins				
TW	0.40	Wide				
RLSV	-0.29	Straight				
RLRV	0.71	Straight				
FA	0.48	Steep				
FLS	0.51	High				
FUA	1.01	Strong				
UH	0.62	High				
UW	1.30	Wide				
UC	-0.38	Weak				
UD	0.33	Shallow				
FTP	-0.15	Wide				
RTP	-0.35	Wide				
TL	0.27	Long				

AUGUST | 29H019664 | DENOVO 16719 AUGUST-ET

ACURA x YODA x FLAGSHIP

- Elite NM\$ Sire
- Outstanding type and udders
- Improves daughter fertility

Reg. Number: 003210133228 Registry Status: 99%-I

Date of Birth: 2020-01-29

Recessives

HH1T, HH2T, HH3T, HH4T, HH5T, HH6T, MWT, TC, TD, TL, TN, TR, TS, TV, TY



6TH DAM: Sully Shottle May-TW EX-91



CDCB HA-USA 08/2023

Dtrs: 0 Herds: 0

Production		
Milk: +1314 Lbs	82% Rel	Beta Casein: A1/A2
Pro: +58 Lbs	+0.06%	Kappa Casein: AB
Fat: +97 Lbs	+0.16%	EFI: 10.6
FS: +131 Lbs		
NM\$: +1025	TPI@: +3035	CM\$: +1038

Health & Fertility

SCE: 2.2	95% Rel	787 Obs
DCE: 2	70% Rel	0 Obs
SSB: 6.2	90% Rel	844 Obs
DSB: 4.2	64% Rel	0 Obs
DPR: +0.8	77% Rel	
HCR: +4.8	CCR: +2.4	LIV: +2.4
SCS: 2.84	79% Rel	
PL: +5.1	77% Rel	
CDN MSP	101	
CDN MT	105	
AHI	102	
TransitionRight®	★★★	
Bull Fertility Conv	★	

Conformation

Dtrs: 0 Herds: 0 PTAT Rel: 80%

		-2	-1	0	1	2
PTAT	1.31					
UDC	1.81					
FLC	0.43					
BWC	-0.08					
ST	0.61	Tall				
SG	0.12	Strong				
BD	0.19	Deep				
DF	0.93	Open				
RA	1.29	Sloped				
TW	0.69	Wide				
RLSV	-1.16	Straight				
RLRV	0.54	Straight				
FA	0.67	Steep				
FLS	0.56	High				
FUA	1.66	Strong				
UH	2.45	High				
UW	2.13	Wide				
UC	0.96	Strong				
UD	1.50	Shallow				
FTP	1.17	Close				
RTP	1.35	Close				
TL	-0.36	Short				

BOVEC50 | 29H019854 | DENOVO 17150 BOVEC50-ET

GALILEO x KENOBI x DELTA

- Elite mastitis resistance
- Adds teat length
- Adds dairy strength

Reg. Number: 003216859571 Registry Status: 99%-I

Date of Birth: 2020-09-08

Recessives HH, HH1T, HH2T, HH3T, HH4T, HH5T, HH6T, MWT, TC, TD, TL, TN, TP, TR, TS, TV, TY



MGD: Schillview Delta Gentle VG-86

BB A2 Sexcel 80

CDCB HA-USA 08/2023

Production Dtrs: 0 Herds: 0

Milk: +541 Lbs 81% Rel Beta Casein: A2/A2
Pro: +45 Lbs +0.10% Kappa Casein: BB
Fat: +71 Lbs +0.18% EFI: 10.4
FS: -71 Lbs
NMS:+802 TPI@:+2791 CMS:+824

Health & Fertility

SCE: 1.6 85% Rel 167 Obs
DCE: 1.7 70% Rel 0 Obs
SSB: 5.3 78% Rel 161 Obs
DSB: 4 64% Rel 0 Obs
DPR:+0.6 76% Rel
HCR:-0.6 CCR:+1.5 LIV:+2.1
SCS: 2.68 78% Rel
PL:+5.2 76% Rel
CDN MSP 103
CDN MT 100
AHI 105
TransitionRight® ★★★★★
Bull Fertility Conv ★★

Conformation Dtrs: 0 Herds: 0 PTAT Rel: 79%

		-2	-1	0	1	2
PTAT	0.96					
UDC	1.57					
FLC	-0.21					
BWC	0.30					
ST	-0.02	Short				
SG	0.26	Strong				
BD	-0.31	Shallow				
DF	-0.20	Tight				
RA	-0.28	High Pins				
TW	0.28	Wide				
RLSV	-0.97	Straight				
RLRV	-0.49	Hock-In				
FA	0.55	Steep				
FLS	-0.13	Low				
FUA	1.59	Strong				
UH	2.26	High				
UW	1.66	Wide				
UC	0.73	Strong				
UD	1.51	Shallow				
FTP	-0.70	Wide				
RTP	-0.09	Wide				
TL	1.20	Long				

DAPPER | 29H020928 | DENOVO 19088 DAPPER-ET

DUFFY x ADMIRAL x JOSUPER

- Elite NM\$ Sire
- Improves daughter fertility
- Supreme EnviroCow

Reg. Number: 003238259119 Registry Status: 99%-I

Date of Birth: 2022-02-08

Recessives HH, HH1T, HH2T, HH3T, HH4T, HH5T, HH6T, MWT, TC, TD, TL, TN, TP, TR, TS, TV, TY



4T: De-Su Montross 4011-ET GP-80

BB A2 Sexcel 80

CDCB HA-USA 08/2023

Production Dtrs: 0 Herds: 0

Milk: +992 Lbs 79% Rel Beta Casein: A2/A2
Pro: +57 Lbs +0.09% Kappa Casein: BB
Fat: +112 Lbs +0.25% EFI: 10.4
FS: +185 Lbs
NMS:+1076 TPI@:+3005 CMS:+1092

Health & Fertility

SCE: 2 63% Rel 0 Obs
DCE: 2.1 58% Rel 0 Obs
SSB: 6.2 59% Rel 0 Obs
DSB: 5.1 56% Rel 0 Obs
DPR:+0.1 74% Rel
HCR:+2.4 CCR:+1.1 LIV:+2.7
SCS: 2.95 75% Rel
PL:+5.5 74% Rel
CDN MSP 98
CDN MT 105
AHI 106
TransitionRight® ★★★★★
Bull Fertility Conv

Conformation Dtrs: 0 Herds: 0 PTAT Rel: 78%

		-2	-1	0	1	2
PTAT	1.01					
UDC	1.15					
FLC	0.61					
BWC	-0.92					
ST	-0.59	Short				
SG	-0.42	Frail				
BD	-0.37	Shallow				
DF	0.87	Open				
RA	-0.03	High Pins				
TW	-0.26	Narrow				
RLSV	0.01	Curved				
RLRV	0.46	Straight				
FA	0.02	Steep				
FLS	0.46	High				
FUA	0.84	Strong				
UH	1.48	High				
UW	1.78	Wide				
UC	0.41	Strong				
UD	0.08	Shallow				
FTP	0.27	Close				
RTP	0.41	Close				
TL	-0.33	Short				

Vernon Basson (owner)
& Jaco Botes (manager)

Farm: Vergaderingskraal Farm
Humansdorp, Eastern Cape

"Our business has been using ABS genetics exclusively for almost 25 years, of which, 20 have been on the GMS mating program. ABS has always provided an excellent choice of reliable sires that have met all criteria we have required for a seasonal pasture based dairy farm. Over the years I have built up a strong relationship with the ABS representative, MC Steyn, who has guided me through genetic selection my whole farming career.

Our relationship has been built on trust, knowledge and excellent service. These days it is simply one of friendship. The result is a genetically sound and uniform herd; good udders, good fertility, good feet and legs. We have focused on breeding smaller stature cows making them better suited to covering large distances required from a free range farm. I look forward to the next 20 years of ABS service..."



DECKER | 29H020359 | SCHURER-HAMMON DECKER

HERCULES x HEROIC x DYNAMIC

- Outstanding type and udders
- Elite mastitis resistance
- Long Lasting Productive Daughters

Reg. Number: 000956067186 Registry Status:

Date of Birth: 2022-01-27

Recessives/ Haplotypes: HH1T, HH2T, HH3T, HH4T, HH5T, HH6T, MWT, TC, TD, TL, TN, TP, TR, TV, TY



BULL: 29H020359-Schurer-Hammon DECKER-18mths

BB A2 Sexcel 80

CDCB HA-USA 08/2023

Production Dtrs: 0 Herds: 0

Milk: +529 Lbs 79% Rel Beta Casein: A2/A2
Pro: +43 Lbs +0.09% Kappa Casein: BB
Fat: +105 Lbs +0.30% EFI: 10.9
FS: +95 Lbs
NMS:+1061 TPI@:+3069 CMS:+1083

Health & Fertility

SCE: 1.7 62% Rel 0 Obs
DCE: 1.6 59% Rel 0 Obs
SSB: 5.1 59% Rel 0 Obs
DSB: 4.2 57% Rel 0 Obs
DPR:+0.1 74% Rel
HCR:+0.2 CCR:+1.2 LIV:+2.5
SCS: 2.67 75% Rel
PL:+7 74% Rel
CDN MSP 105
CDN MT 104
AHI 110
TransitionRight® ★★★★★
Bull Fertility Conv

Conformation Dtrs: 0 Herds: 0 PTAT Rel: 77%

		-2	-1	0	1	2
PTAT	1.83					
UDC	2.39					
FLC	1.25					
BWC	-0.97					
ST	-0.21	Short				
SG	-0.71	Frail				
BD	-0.65	Shallow				
DF	1.07	Open				
RA	-0.84	High Pins				
TW	0.85	Wide				
RLSV	1.25	Curved				
RLRV	0.81	Straight				
FA	0.35	Steep				
FLS	1.30	High				
FUA	2.17	Strong				
UH	2.89	High				
UW	2.67	Wide				
UC	1.38	Strong				
UD	1.61	Shallow				
FTP	2.24	Close				
RTP	2.25	Close				
TL	-1.11	Short				

CABO | 29H019433 | DENOVO 16034 CABO-ET

ENTITY x VERONA x JOSUPER

- Low Maintenance Sire
- Impressive Calving ease
- Supreme EnviroCow

Reg. Number: 003204165272 Registry Status: 99%-I

Date of Birth: 2019-06-02

Recessives HH1T, HH2T, HH3T, HH4T, HH5T, HH6T, MWC, TC, TD, TL, TN, TR, TS, TV, TY



MGD: Ms Cardigans Js Cashmere-ET VG-85

BB A2 Sexcel 80

CDCB HA-USA 08/2023

Production Dtrs: 17 Herds: 3

Milk: +898 Lbs 87% Rel Beta Casein: A1/A2
Pro: +53 Lbs +0.09% Kappa Casein: AE
Fat: +98 Lbs +0.22% EFI: 10.1
FS: +158 Lbs
NMS:+922 TPI@:+2864 CMS:+939

Health & Fertility

SCE: 1.6 94% Rel 822 Obs
DCE: 1.8 82% Rel 5 Obs
SSB: 5.4 86% Rel 680 Obs
DSB: 4.8 78% Rel 5 Obs
DPR:-0.5 79% Rel
HCR:+0.6 CCR:+0.1 LIV:+2.4
SCS: 2.87 82% Rel
PL:+3.9 80% Rel
CDN MSP 96
CDN MT 99
AHI 93
TransitionRight® ★★★★★
Bull Fertility Conv ★★★★★

Conformation Dtrs: 0 Herds: 0 PTAT Rel: 81%

		-2	-1	0	1	2
PTAT	0.71					
UDC	1.11					
FLC	0.95					
BWC	-0.20					
ST	-0.11	Short				
SG	-0.31	Frail				
BD	-0.61	Shallow				
DF	0.21	Open				
RA	-0.64	High Pins				
TW	1.13	Wide				
RLSV	-0.16	Straight				
RLRV	1.06	Straight				
FA	0.80	Steep				
FLS	0.80	High				
FUA	1.14	Strong				
UH	1.41	High				
UW	1.05	Wide				
UC	0.29	Strong				
UD	1.08	Shallow				
FTP	0.70	Close				
RTP	0.75	Close				
TL	-1.36	Short				

Genetics For Tomorrow

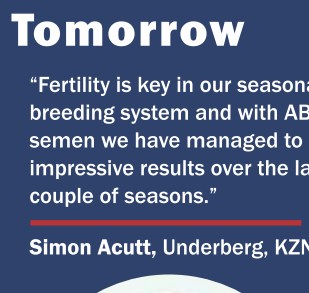


"It's quite evident that we'll have pressure on cow numbers in the future, so we need an animal that can produce some good milk, solids and not fall to pieces."

Tim Dryscoll
Southland, New Zealand

Tim is now using ABS genetics to achieve stronger udders with good capacity that can handle higher production, and they've noticed good improvements in that area since switching their genetic plan.

Our pasture sires have been carefully selected for South African pasture based systems and maintain high Health and Fertility figures while improving udders and somatic cell count.



"Fertility is key in our seasonal breeding system and with ABS semen we have managed to get impressive results over the last couple of seasons."

Simon Acutt, Underberg, KZN



Dean knows what really works:
- let the cows graze with high-quality grass to maximize milk production!
- using minimum concentrate and keeping cows in great condition to ensure fertility and top-notch milk production.

Dean Biggs, Tsitsikamma, E. Cape
with MC Steyn (ABS Genetics)

DEKALB | 94H021052 | BOMAZ DEKALB-ET
DUFFY x DULUTH x TOPSHOT

- Exceptional Type Sire
- Over 60 lbs Protein
- Supreme EnviroCow

Reg. Number: 003249921968 Registry Status: 99%-I
Date of Birth: 2022-05-15
Recessives/ Haplotypes: HH1T, HH2T, HH3T, HH4T, HH5T, HH6T, MWT, TC, TD, TL, TN, TP, TR, TS, TV, TY



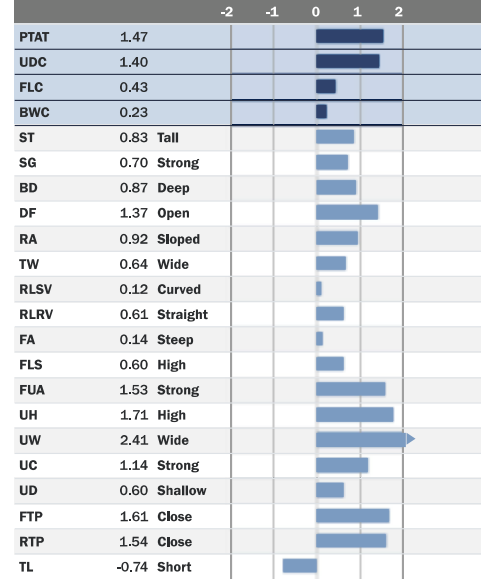
MGD: BOMAZ TOPSHOT 7892-ET

CDCB HA-USA 08/2023

Production Dtrs: 0 Herds: 0
Milk: +975 Lbs 80% Rel Beta Casein: A2/A2
Pro: +63 Lbs +0.11% Kappa Casein: AB
Fat: +100 Lbs +0.22% EFI: 10.4
FS: +56 Lbs
NMS:+958 TPI@:+2970 CMS:+980

Health & Fertility
SCE: 2.1 63% Rel 0 Obs
DCE: 2.2 58% Rel 0 Obs
SSB: 6.1 59% Rel 0 Obs
DSB: 4.9 56% Rel 0 Obs
DPR:-0.7 74% Rel
HCR:+2.2 CCR:+0.6 LIV:+1.6
SCS: 2.86 75% Rel
PL:+4.2 74% Rel
CDN MSP 98
CDN MT 102
AHI 105
TransitionRight® ★★★★★
Bull Fertility Conv

Conformation Dtrs: 0 Herds: 0 PTAT Rel: 78%



DIOXIDE | 29H021300 | WILRA DIOXIDE-ET
DUFFY x HERITAGE x MARIUS

- Elite NM\$ Sire
- Impressive Calving ease + Daughter Fertility
- Long Lasting Productive Daughters

Reg. Number: 003228011400 Registry Status: 99%-I
Date of Birth: 2022-07-10
Recessives/ Haplotypes: HH1T, HH2T, HH3T, HH4T, HH5T, HH6T, MWT, TC, TD, TL, TN, TP, TR, TV, TY



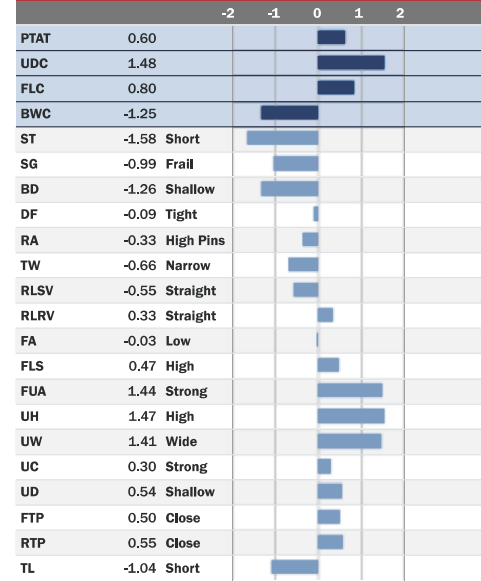
Dam of MGS: De-Su Everest 6970-ET GP-83

CDCB HA-USA 08/2023

Production Dtrs: 0 Herds: 0
Milk: +1375 Lbs 79% Rel Beta Casein: A1/A2
Pro: +49 Lbs +0.02% Kappa Casein: AE
Fat: +92 Lbs +0.13% EFI: 10.3
FS: +371 Lbs
NMS:+1142 TPI@:+2998 CMS:+1151

Health & Fertility
SCE: 1.5 63% Rel 0 Obs
DCE: 1.7 58% Rel 0 Obs
SSB: 5.9 60% Rel 0 Obs
DSB: 4.6 56% Rel 0 Obs
DPR:+1.3 73% Rel
HCR:+1.8 CCR:+2.3 LIV:+3.7
SCS: 2.77 74% Rel
PL:+7.7 73% Rel
CDN MSP 101
CDN MT 103
AHI 104
TransitionRight® ★★★★★
Bull Fertility Conv

Conformation Dtrs: 0 Herds: 0 PTAT Rel: 77%



DODGER | 29H021090 | BOMAZ DODGER-ET
DUFFY x FASTBALL x YODA

- Elite NM\$ Sire
- Long Lasting Productive Daughters
- Improves daughter fertility

Reg. Number: 003249922001 Registry Status: 99%-I
Date of Birth: 2022-06-18
Recessives/ Haplotypes: HH1T, HH2T, HH3T, HH4T, HH5T, HH6T, MWT, TC, TD, TL, TN, TP, TR, TS, TV, TY



4TH DAM: Bomaz Bob 6207-ET VG-86

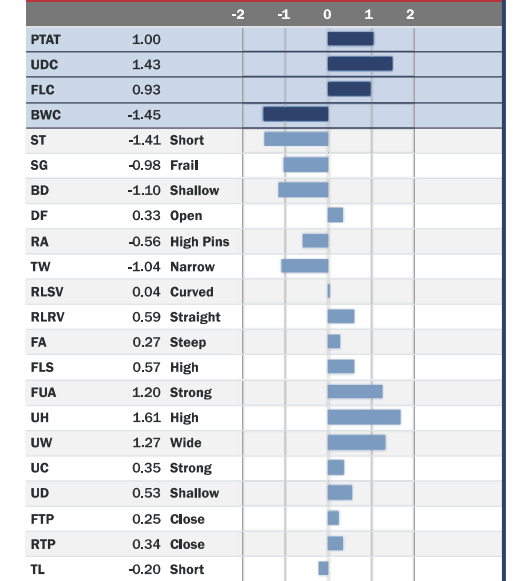
CDCB HA-USA 08/2023

Production Dtrs: 0 Herds: 0
Milk: +1889 Lbs 79% Rel Beta Casein: A2/A2
Pro: +59 Lbs 0.00% Kappa Casein: AA
Fat: +100 Lbs +0.09% EFI: 10.5
FS: +340 Lbs
NMS:+1192 TPI@:+3067 CMS:+1197

Health & Fertility
SCE: 2.3 63% Rel 0 Obs
DCE: 2.4 59% Rel 0 Obs
SSB: 6.1 60% Rel 0 Obs
DSB: 4.5 57% Rel 0 Obs
DPR:+0.2 74% Rel
HCR:+1.6 CCR:+1.4 LIV:+4
SCS: 2.85 75% Rel
PL:+7.5 74% Rel
CDN MSP 102
CDN MT 102
AHI 102
TransitionRight® ★★★
Bull Fertility Conv



Conformation Dtrs: 0 Herds: 0 PTAT Rel: 78%



Semen Fertility Pregnancy Kings

PREGNANCY KING
Sire has high semen fertility based on actual observations

Semen fertility is different to daughter fertility. Semen fertility relates to the ability of the bull's semen to get cows in calf. Daughter fertility relates to the ability of the bull's daughters to get in calf. We cannot assume that an above average semen fertility bull will have daughters with above average fertility. While conception rates are similar for semen from most bulls, some bulls have higher or lower conception rates. Using hundreds of thousands of mating records collected through data processing centres around the globe. **Semen Fertility Values estimate the ability of the bull's semen to get cows in calf.** This measure is not a breeding value. The differences between bulls' semen fertility are both genetic and environmental.

Such environmental factors include the collection and processing procedures of a bull's semen, the health status/stress level of the bull at the time of collection as well as many others. However, Semen Fertility Values can be considered when making bull selections. ABS sees the importance of providing high semen fertility sires for the South African dairy farmer and a star system is used to determine which bulls are better for semen fertility. 5-star bulls represent the top 10% for their breed whilst the next 20% are 4-star bulls. These are expected to be above average for semen fertility. All 3 star bulls are considered to be average and consist of the next 40% of the population. Here is a selection of ABS bulls that are high 5, 4 and 3 star semen fertility.

- ★★★★★
SPOCK 29H018182
BODIE 29H019755
CREAMER 29H019017
CSCWOODSIDE 29JE4313
TROOPER (4) 29JE4204

- ★★★★★
ACHIEVER 29H018296
HAWKEYE 29H019403
MARVEL 29H019395
ATRIUM 29H018772
ENVY 29H019510
DEEKS 29H019607
PALACE 29H018847
BOXCAR 29H018806

- ★★★
CABO 29H019433
RADLEY 29H019049
HOWLER 29H018878
INVICTUS 29H017454

GILLIGAN | 29H019894 | BOMAZ GILLIGAN-ET
GALILEO x SASSAFRAS x TOPSHOT

- Improves daughter fertility
- Adds teat length
- Production King

Reg. Number: 003219696559 Registry Status: 99%-I
Date of Birth: 2020-10-22
Recessives/ Haplotypes: HH, HH1T, HH2T, HH3T, HH4T, HH5T, HH6T, MWT, TC, TD, TL, TN, TP, TR, TS, TV, TY



DAM: Bomaz Sassafra 8791-ET VG-87

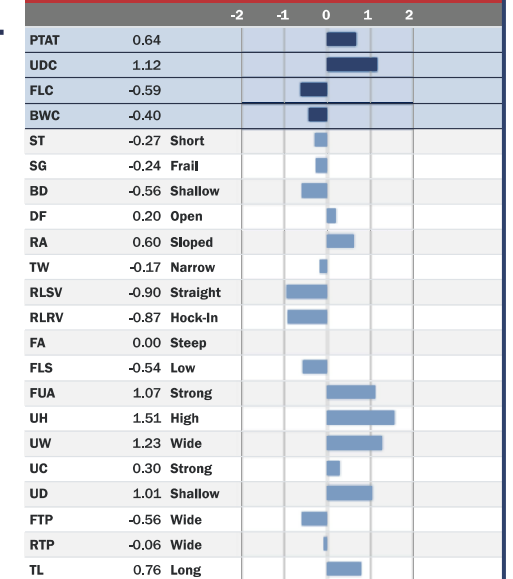
CDCB HA-USA 08/2023

Production Dtrs: 0 Herds: 0
Milk: +1001 Lbs 82% Rel Beta Casein: A2/A2
Pro: +39 Lbs +0.03% Kappa Casein: AB
Fat: +82 Lbs +0.15% EFI: 10.4
FS: +8 Lbs
NMS:+863 TPI@:+2797 CMS:+873

Health & Fertility
SCE: 1.8 63% Rel 0 Obs
DCE: 1.6 61% Rel 0 Obs
SSB: 5 60% Rel 0 Obs
DSB: 3.8 59% Rel 0 Obs
DPR:+1.1 76% Rel
HCR:+2.2 CCR:+2.9 LIV:+3.6
SCS: 2.79 78% Rel
PL:+5.5 76% Rel
CDN MSP 103
CDN MT 97
AHI 104
TransitionRight® ★★★★★
Bull Fertility Conv



Conformation Dtrs: 0 Herds: 0 PTAT Rel: 80%

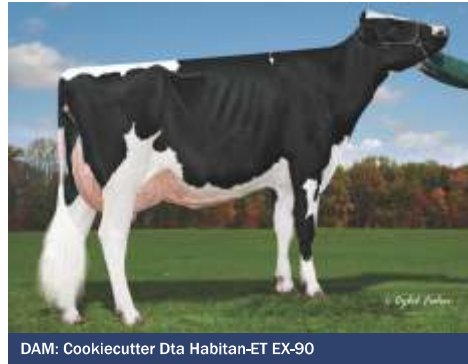


HASHTAG | 29H019864 | AOT HASHTAG-ET

FASTBALL x DELTA x HILLS DAYS

- Outstanding type and udders
- Adds teat length
- Production King

Reg. Number: 003217133557 Registry Status: 99%-I
Date of Birth: 2020-06-12
Recessives/ Haplotypes: HH1T, HH2T, HH3T, HH4T, HH5T, HH6T, MWT, TC, TD, TL, TN, TR, TS, TV, TY



DAM: Cookiecutter Dta Habitan-ET EX-90



CDCB HA-USA 08/2023
Dtrs: 0 Herds: 0

Production
Milk: +1207 Lbs 83% Rel Beta Casein: A2/A2
Pro: +40 Lbs +0,01% Kappa Casein: AB
Fat: +104 Lbs +0,20% EFI: 10,5
FS: +156 Lbs
NMS:+899 TPI@:+2915 CMS:+906

Health & Fertility
SCE: 2 80% Rel 117 Obs
DCE: 2.7 63% Rel 0 Obs
SSB: 5.6 69% Rel 213 Obs
DSB: 6.3 62% Rel 0 Obs
DPR:-1.1 79% Rel
HCR:+2.7 CCR:+0,2 LIV:+0,8
SCS: 2.75 81% Rel
PL:+4,3 79% Rel
CDN MSP 106
CDN MT 105
AHI 100
TransitionRight® ★★★★★
Bull Fertility Conv

Conformation Dtrs: 0 Herds: 0 PTAT Ref: 82%

		-2	-1	0	1	2
PTAT	1.96					
UDC	1.98					
FLC	0.94					
BWC	-0.38					
ST	0.39	Tall				
SG	0.27	Strong				
BD	0.47	Deep				
DF	1.72	Open				
RA	-0.80	High Pins				
TW	0.64	Wide				
RLSV	0.03	Curved				
RLRV	0.75	Straight				
FA	1.39	Steep				
FLS	0.98	High				
FUA	2.00	Strong				
UH	2.74	High				
UW	2.75	Wide				
UC	1.22	Strong				
UD	0.76	Shallow				
FTP	0.64	Close				
RTP	0.79	Close				
TL	0.13	Long				

HAWKEYE | 29H019403 | WINSTAR HAWKEYE-ET

AMAZON x FRAZZLED x MONTROSS

- Elite semen fertility
- Impressive Calving ease
- Adds teat length

Reg. Number: 003206709088 Registry Status:
Date of Birth: 2019-03-09
Recessives/ Haplotypes: HH1T, HH2T, HH3T, HH4T, HH5T, HH6T, MWT, TC, TD, TL, TN, TS, TV, TY



DAM: Triplecrown-Jb Frz 31107-ET VG-86



CDCB HA-USA 08/2023
Dtrs: 21 Herds: 5

Production
Milk: +958 Lbs 87% Rel Beta Casein: A2/A2
Pro: +40 Lbs +0,04% Kappa Casein: AB
Fat: +78 Lbs +0,14% EFI: 10,5
FS: +58 Lbs
NMS:+862 TPI@:+2753 CMS:+875

Health & Fertility
SCE: 1.6 95% Rel 860 Obs
DCE: 1.9 71% Rel 24 Obs
SSB: 5.3 88% Rel 810 Obs
DSB: 4.3 65% Rel 22 Obs
DPR:+0.3 78% Rel
HCR:+2.3 CCR:+1.9 LIV:+3.2
SCS: 2.7 82% Rel
PL:+5,8 79% Rel
CDN MSP 97
CDN MT 98
AHI 108
TransitionRight® ★★★★★
Bull Fertility Conv

Conformation Dtrs: 0 Herds: 0 PTAT Ref: 81%

		-2	-1	0	1	2
PTAT	0.14					
UDC	0.82					
FLC	-0.11					
BWC	0.07					
ST	-0.72	Short				
SG	-0.07	Frail				
BD	-0.64	Shallow				
DF	-0.72	Tight				
RA	-0.25	High Pins				
TW	-0.01	Narrow				
RLSV	-0.80	Straight				
RLRV	-0.28	Hock-In				
FA	-0.06	Low				
FLS	-0.24	Low				
FUA	0.93	Strong				
UH	0.67	High				
UW	0.62	Wide				
UC	0.36	Strong				
UD	0.47	Shallow				
FTP	0.29	Close				
RTP	0.47	Close				
TL	0.26	Long				

LAKESIDE | 29H020579 | DENOVO 3821 LAKESIDE-ET

HERITAGE x CRIMSON x MONTANA

- Elite mastitis resistance
- Impressive Calving ease
- FeedAdvantage Specialist

Reg. Number: 003127591419 Registry Status: 99%-I
Date of Birth: 2021-03-22
Recessives/ Haplotypes: HH, HH1T, HH2T, HH3T, HH4T, HH5T, HH6T, MWT, TC, TD, TL, TN, TP, TR, TS, TV, TY



BULL: 29H020579 Denovo 3821 LAKESIDE-ET



CDCB HA-USA 08/2023
Dtrs: 0 Herds: 0

Production
Milk: +639 Lbs 81% Rel Beta Casein: A2/A2
Pro: +44 Lbs +0,08% Kappa Casein: BB
Fat: +76 Lbs +0,18% EFI: 10,4
FS: +253 Lbs
NMS:+962 TPI@:+2809 CMS:+984

Health & Fertility
SCE: 1.6 71% Rel 3 Obs
DCE: 1.7 70% Rel 0 Obs
SSB: 5.5 64% Rel 3 Obs
DSB: 4.4 64% Rel 0 Obs
DPR:0 75% Rel
HCR:-0.1 CCR:+1.2 LIV:+4
SCS: 2.63 78% Rel
PL:+6,6 76% Rel
CDN MSP 105
CDN MT 102
AHI 105
TransitionRight® ★★★★★
Bull Fertility Conv

Conformation Dtrs: 0 Herds: 0 PTAT Ref: 79%

		-2	-1	0	1	2
PTAT	0.58					
UDC	1.32					
FLC	-0.10					
BWC	-1.44					
ST	-1.26	Short				
SG	-1.05	Frail				
BD	-1.08	Shallow				
DF	0.48	Open				
RA	-0.49	High Pins				
TW	-0.47	Narrow				
RLSV	-0.73	Straight				
RLRV	-0.32	Hock-In				
FA	-0.16	Low				
FLS	-0.36	Low				
FUA	1.21	Strong				
UH	1.37	High				
UW	1.50	Wide				
UC	0.21	Strong				
UD	0.58	Shallow				
FTP	0.46	Close				
RTP	0.18	Close				
TL	-1.27	Short				



"We are enjoying impressive conception rates with SEXCEL, higher in comparison to our conventional & beef semen! The Sexed semen is being used on our best cows which are our higher producers and the girls that you would think would take longer to conceive!"

Jason Shewan
Shirley Farm, Mooi River, KZN

"Ek is baie gelukkig met die vrugbaarheid en kwaliteit van die semen wat ons van ABS Genetics ontvang, en sien uit daarna om voort te gaan om in die toekoms saam te werk."

Zack Slabbert from Knockae Kareehoek Dairy, Golden Valley, with Dale Bryce - Borthwick (ABS Genetics).



"My cows are 4x4 cows and don't get any extra TLC. With straws per conception of 1.7 and 1.9 for two of ABS bulls on conventional semen and 2.4 for another on Sexcel, all on cows, the numbers speak for themselves."

Greg Barber
Greytown, KZN

What is EnviroCow?

EnviroCow focuses on the breeding of cows for their environmental impact, to improve the environmental efficiency of milk production.

EnviroCow considers factors including:

- > Cow lifespan,
- >> Milk production,
- >>> Fertility, and
- >>>> the Feed Advantage Index.

By utilising bulls with high EnviroCow scores, you will be ensuring that your carbon footprint is reduced.

Improve your Herds Carbon Footprint by using our EnviroCow specialists below:

EnviroCow

29H020573	MEADOW-PP	3.6
29H019894	GILLIGAN	3.6
29H020359	DECKER	3.4
29H019854	BOVEC50	3.3
29H019433	CABO	3.2
29H020144	DOMINATOR	3.0
29H019395	MARVEL	2.9
29H018772	ATRIUM	2.7
29H017454	INVICTUS	2.7

MARVEL | 29H019395 | OCD MARVEL-ET

KENOBI x DELTA x SNOWMOBIL

- Elite semen fertility
- Adds dairy strength
- Adds teat length

Reg. Number: 003201859526 Registry Status: 99%-I
Date of Birth: 2019-02-04
Recessives/Haplotypes: HH1T, HH2T, HH3T, HH4T, HH5T, HH6T, MWT, TC, TD, TL, TN, TS, TV, TY



DAM: OCD Delta Menna 34187-ET VG-85



CDCB HA-USA 08/2023
Dtrs: 93 Herds: 26

Production
Milk: +617 Lbs 92% Rel Beta Casein: A1/A2
Pro: +44 Lbs +0,09% Kappa Casein: BE
Fat: +75 Lbs +0,18% EFI: 10,7
FS: +181 Lbs
NMS:+828 TPI@:+2766 CMS:+846

Health & Fertility
SCE: 1.9 91% Rel 552 Obs
DCE: 2.5 72% Rel 28 Obs
SSB: 5.2 82% Rel 790 Obs
DSB: 4.2 66% Rel 26 Obs
DPR:-0.6 81% Rel
HCR:-0.5 CCR:+0,1 LIV:+0,7
SCS: 2.81 89% Rel
PL:+4,8 83% Rel
CDN MSP 101
CDN MT 104
AHI 104
TransitionRight® ★★★★★
Bull Fertility Conv

Conformation Dtrs: 0 Herds: 0 PTAT Ref: 82%

		-2	-1	0	1	2
PTAT	1.48					
UDC	1.46					
FLC	0.10					
BWC	0.31					
ST	-0.27	Short				
SG	0.35	Strong				
BD	-0.01	Shallow				
DF	-0.18	Tight				
RA	-0.29	High Pins				
TW	0.20	Wide				
RLSV	-0.86	Straight				
RLRV	-0.31	Hock-In				
FA	0.69	Steep				
FLS	0.11	High				
FUA	1.93	Strong				
UH	1.71	High				
UW	1.20	Wide				
UC	-0.16	Weak				
UD	1.55	Shallow				
FTP	-0.18	Wide				
RTP	-0.10	Wide				
TL	0.23	Long				



Sires who score well on desirable traits for grazing systems by reducing stature, improving fertility and having excellent locomotion.

MEADOW-PP | 29H020573 | WINSTAR MEADOW-PP-ET

MENDEL-P x ACURA x DELTA

- High Milk Components Sire
- Impressive Calving ease
- High Calf Survival

Reg. Number: 003224809815 Registry Status: 99%-I
Date of Birth: 2021-03-31
Recessives/ Haplotypes: HH1T, HH2T, HH3T, HH4T, HH5T, HH6T, MWT, PP, TC, TD, TL, TN, TR, TS, TV, TY



MGD: Seagull-Bay Karamae P VG-86



CDCB HA-USA 08/2023

Production			Dtrs: 0 Herds: 0
Milk: +150 Lbs	81% Rel	Beta Casein: A1/A2	
Pro: +33 Lbs	+0.10%	Kappa Casein: AE	
Fat: +117 Lbs	+0.39%	EFI: 10.3	
FS: +86 Lbs			
NMS:+957	TPI@:+2894	CMS:+975	

Health & Fertility

SCE: 1.4	76% Rel	84 Obs
DCE: 1.2	70% Rel	0 Obs
SSB: 5.6	66% Rel	84 Obs
DSB: 4.4	64% Rel	0 Obs
DPR:-0.1	75% Rel	
HCR:+1.6	CCR:+1.7	LIV:+4.2
SCS: 2.89	78% Rel	
PL:+4.9	75% Rel	
CDN MSP	96	
CDN MT	98	
AHI	102	
TransitionRight®	★★★★	
Bull Fertility Conv	★★	

Conformation Dtrs: 0 Herds: 0 PTAT Rel: 79%

		-2	-1	0	1	2
PTAT	0.74					
UDC	1.22					
FLC	0.57					
BWC	-0.76					
ST	-0.68					
SG	-0.48					
BD	-0.59					
DF	0.44					
RA	-0.11					
TW	-0.04					
RLSV	0.33					
RLRV	0.08					
FA	0.10					
FLS	0.50					
FUA	1.27					
UH	1.74					
UW	1.55					
UC	-0.58					
UD	0.57					
FTP	-0.22					
RTP	-0.47					
TL	-0.31					

RADLEY | 29H019049 | FAIRMONT MEDLEY RADLEY

MEDLEY x JOSUPER x MOONBOY

- Over 60 lbs Protein
- Lameness Improver
- Supreme EnviroCow

Reg. Number: 003146184829 Registry Status: 99%-I
Date of Birth: 2018-02-28
Recessives/ Haplotypes: HH1T, HH2T, HH3T, HH4T, HH5T, HH6T, MWT, TC, TD, TL, TN, TR, TS, TV, TY



MGD: Co-Op Moonboy Rescue-ET EX-90



CDCB HA-USA 08/2023

Production			Dtrs: 92 Herds: 44
Milk: +1713 Lbs	92% Rel	Beta Casein: A2/A2	
Pro: +69 Lbs	+0.05%	Kappa Casein: BB	
Fat: +67 Lbs	0.00%	EFI: 9.8	
FS: -65 Lbs			
NMS:+799	TPI@:+2782	CMS:+810	

Health & Fertility

SCE: 2.3	88% Rel	278 Obs
DCE: 1.9	74% Rel	65 Obs
SSB: 5.2	79% Rel	265 Obs
DSB: 4.1	73% Rel	57 Obs
DPR:-1.7	85% Rel	
HCR:0	CCR:-0.8	LIV:+1.6
SCS: 2.89	90% Rel	
PL:+4.2	86% Rel	
CDN MSP	102	
CDN MT	101	
AHI	106	
TransitionRight®	★★★★★	
Bull Fertility Conv	★★★★	

Conformation Dtrs: 62 Herds: 22 PTAT Rel: 90%

		-2	-1	0	1	2
PTAT	1.03					
UDC	1.05					
FLC	0.78					
BWC	0.33					
ST	0.43					
SG	0.36					
BD	-0.12					
DF	0.30					
RA	-0.88					
TW	0.72					
RLSV	0.11					
RLRV	1.03					
FA	0.61					
FLS	0.77					
FUA	0.87					
UH	1.26					
UW	2.26					
UC	0.62					
UD	0.33					
FTP	0.32					
RTP	0.19					
TL	-0.02					

SPOCK | 29H018182 | ROSYLANE-LLC SPOCK-ET

SILVER x SUPERSIRE x TORNADO

- Elite semen fertility
- Feet and Leg Specialist
- Impressive Locomotion

Reg. Number: 003013115112 Registry Status: 99%-I
Date of Birth: 2015-04-10
Recessives/ Haplotypes: HH1T, HH2T, HH3T, HH4T, HH5T, HH6T, MWT, TC, TD, TL, TN, TR, TS, TV, TY



DTR: ABS Spock 7819-ET, De Novo Genetics LLC, New Albin, IA



IB-M/USA HA-USA 08/2023

Production			Dtrs: 11558 Herds: 1584
Milk: +87 Lbs	99% Rel	Beta Casein: A1/A1	
Pro: +23 Lbs	+0.07%	Kappa Casein: AB	
Fat: +98 Lbs	+0.34%	EFI: 10.8	
FS: -136 Lbs			
NMS:+575	TPI@:+2611	CMS:+590	

Health & Fertility

SCE: 2.1	99% Rel	11561 Obs
DCE: 1.5	97% Rel	4037 Obs
SSB: 6.1	98% Rel	10944 Obs
DSB: 4.2	97% Rel	3406 Obs
DPR:-1.9	98% Rel	
HCR:-0.6	CCR:-1.7	LIV:-0.8
SCS: 2.82	99% Rel	
PL:+1.6	99% Rel	
CDN MSP	96	
CDN MT	103	
AHI	113	
TransitionRight®	★★★★★	
Bull Fertility Conv	★★★★★	

Conformation Dtrs: 1610 Herds: 375 PTAT Rel: 97%

		-2	-1	0	1	2
PTAT	0.82					
UDC	0.82					
FLC	1.13					
BWC	0.76					
ST	-0.13					
SG	1.02					
BD	0.63					
DF	-0.07					
RA	-1.04					
TW	-0.17					
RLSV	0.11					
RLRV	1.51					
FA	0.77					
FLS	0.90					
FUA	1.13					
UH	0.71					
UW	0.90					
UC	0.50					
UD	0.64					
FTP	0.21					
RTP	0.19					
TL	-0.43					



Daughter of 29H017454 DeNovo INVICTUS



29H0020144-Schurer-Hammon DOMINATOR-16 Mths



Daughter of 29H018772 DeNovo 18772 ATRIUM

INVICTUS

29H017454

Achiever x Supershot x Monarch

DENOVO INVICTUS-ET	
A2/A2	
Daughter Fert	9.4
Healthy Cow	£235
Lameness	2.9 Improver
Maintenance	-26 Reduce Size

DOMINATOR

29H020144

Heroic x Medley x Supershot

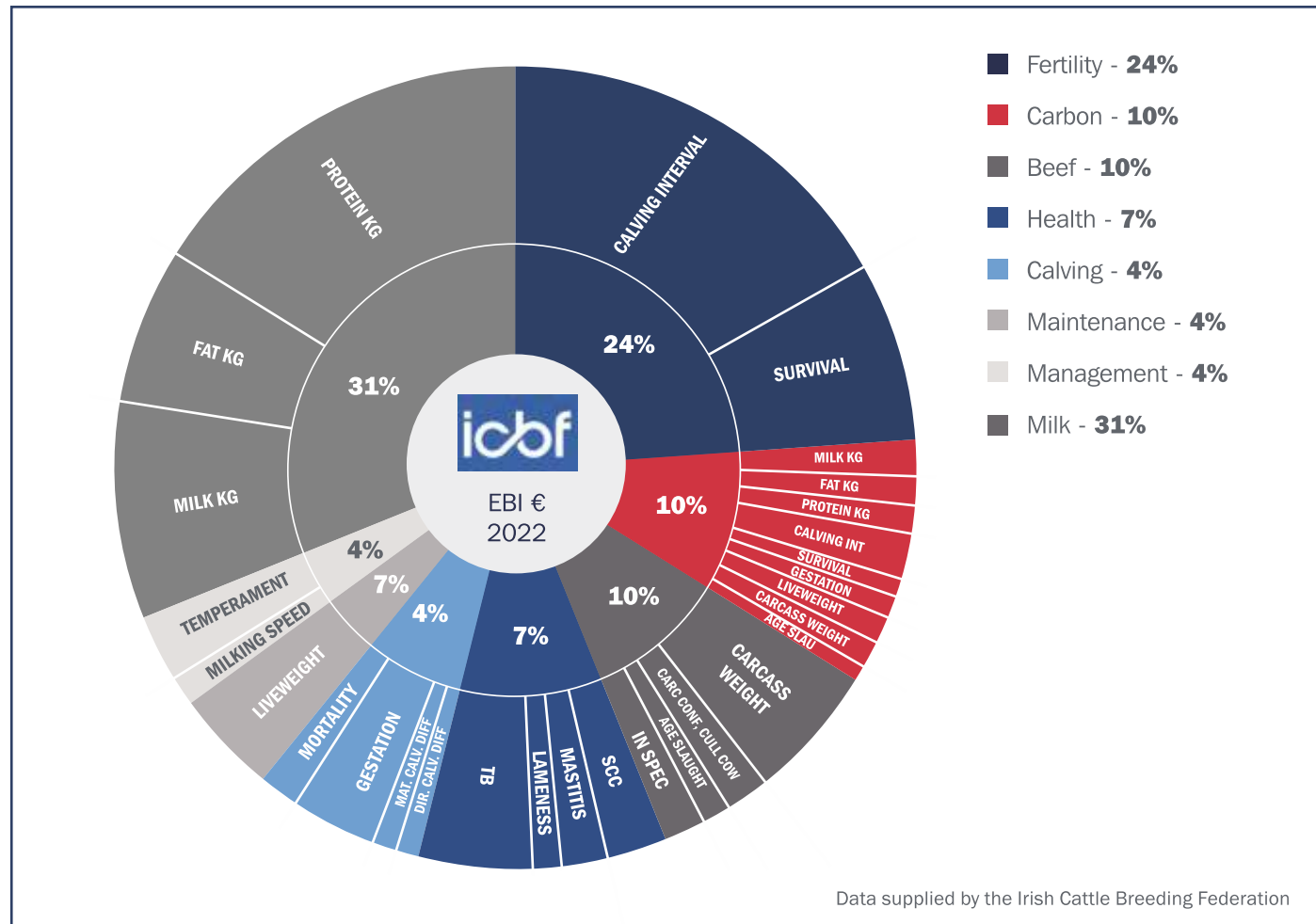
SCHURER-HAMMON DOMINATOR	
A2/A2	
Daughter Fert	6.9
Healthy Cow	£154
Lameness	2.5 Improver
Maintenance	-19 Reduce Size

ATRIUM

29H018772

Achiever x Deltax Supersire

DENOVO 7921 ATRIUM-ET	
A2/A2	
Daughter Fert	12.4
Healthy Cow	£169
Lameness	2.5 Improver
Maintenance	-32 Reduce Size



SCHUMACHER

Pivotal x Matt x Uphill
CHERRYHILL SCHUMACHER
Bull ID: 29H020282
NASIS: 45FFU18

Sexcel **85** **BB** **A2** **G** **EBI 325** (63%) **BPI 118** (50%) **HWI 214** (44%) **Aust Dtr Fert 117** (35%)

Sire: KILFEACLE PIVOTAL MGD: CHERRYHILL UPH ADELE
Dam: CHERRYHILL FR2394 ADELE 1885 Breeder: CHERRYHILL DAIRIES, IRELAND

Irish Production 79%Rel

Fat	18kg	Milk Sub Index	108	79%
Prot	14kg	Carbon Sub Index	10	64%
		Beef Sub Index	-11	59%
		Management Sub Index	-4	57%

Risk CE in Heifers **Low**

Irish Fertility and Health

SCC	-0.02	82%	Less	More
Milking Speed (seconds)	-11.60	78%	Shorter	Longer

Irish Calving

Cow Calving Ease	2.19	64%	Easier	Harder
------------------	------	-----	--------	--------

CHERRYHILL SCHUMACHER

COLIN

Franco x Evert x Haze
CHERRYHILL COLIN
Bull ID: 29H017461
NASIS: 65FFR13

Sexcel **90** **BB** **A2** **G** **EBI 310** (76%) **BPI 227** (55%) **HWI 311** (50%) **Aust Dtr Fert 118** (43%)

Sire: HAGGARD FRANCO MGD: CHERRYHILL KOZ 68
Dam: CHERRYHILL LHZ PEACE Breeder: CHERRYHILL DAIRIES, IRELAND

Irish Production 89%Rel

Fat	16kg	Milk Sub Index	83	89%
Prot	8kg	Carbon Sub Index	15	77%
		Beef Sub Index	-20	83%
		Management Sub Index	14	63%

Risk CE in Heifers **Low**

Irish Fertility and Health

SCC	0.03	88%	Less	More
Milking Speed (seconds)	-23.04	85%	Shorter	Longer

Irish Calving

Cow Calving Ease	2.10	80%	Easier	Harder
------------------	------	-----	--------	--------

CHERRYHILL COLIN

€EBI

The Economic Breeding Index (€EBI) is a single figure profit index aimed at helping farmers to identify the most profitable bulls and cows for breeding dairy herd replacements. It includes information on eight sub-indices related to profitable milk production primarily on grass based systems.

The economic values included in the index are based on data collected from Irish dairy farms and costings based on the Irish dairy industry.

€EBI is a multi-breed index and ABS has bulls from the following breeds (including polled sires):

- 1) Irish Holstein Friesian
- 2) Holstein
- 3) Friesian
- 4) Jersey

€EBI FOCUS POINTS

- High components compared to milk volume
- Promotes fertile cows to reduce calving interval
- Increased longevity and lower replacement rates
- Carbon efficient cows
- Selects for calving ease, gestation length and calf mortality
- Carcass size, weight and conformation
- Looks at lameness cell counts and mastitis



Martin Wheelton runs two Spring Block calving herds in Gawsworth, Cheshire, UK.

Mill End Farm is home to 550 cows averaging 7,000kgs per cow and Heaton Hall Farm home to 220 cows averaging 5,970kgs per cow. Both are recording about 4.6% fat and 3.6% protein. The ability of these cows to be high producers off a low input system is a testament to the efficiency and optimization of the ABS Irish HO genetics. Currently the herd is producing an excess of 7000lt/lac on an all year round grazing system. The cows receive a flat rate feeding of 4kg concentrate/day. A supplement of grass/maize silage is added when there is a dry matter shortage on farm.



Irish Holsteins on Martin Wheelton's Farm, Gawsworth, Cheshire, UK.

NAAB	CODE NAME	SEXCEL	CMS	JPI	SAINET	MILK	PRO	FAT	CFP	PRO%	FAT%	PL	LIV	SCS	DPR	CCR	PIAT	JUI	PEDIGREE	BULL FERT.	TRANSITION RIGHT®	BETA CASEIN	KAPPA CASEIN	DANISH HERITAGE	PAGE	
PROVEN SIRES																										
29JE4117	WESTPORT {5}		610	138	108	395	38	61	99	0.11	0.19	4	2.1	2.73	-0.4	-0.1	1.3	8	WORLD CUP {4} x FASTRACK	*	★★★	A2/A2	AB	23%	26	
29JE4204	TROOPER {4}	Sexcel	657	147	108	1220	51	65	116	0.03	0.03	3.6	0.9	2.88	-0.1	0.5	1.1	5.1	MESQUITE x LISTOWEL-P	*****	★★★	A2/A2	BB	26%	26	
GENOMIC SIRES																										
29JE4349	WOBBLE		633	147	111	808	52	82	134	0.1	0.19	2.7	1.2	2.97	-0.5	0.5	1	8.6	JOINER x MIGHTY		★★★	A1/A2	BB	35%	27	
29JE4363	QUEST {4}		750	162	109	593	43	68	111	0.1	0.18	5.2	0.4	2.71	-0.2	0.8	0.7	6.4	JUGGERNAUT {6} x GOT MAID		★★★★	A2/A2	BB	37%	25	
29JE4362	MOONWALK		598	137	110	705	34	70	104	0.04	0.16	3	1.6	2.95	0.1	0.6	1.8	14.1	JOINER x DEMOS-P		★★★	A1/A2	BB	41%	25	
29JE4305	JAMMER		758	177	109	1041	51	74	125	0.06	0.11	4.3	3.6	2.76	0.4	0.5	1.4	11.9	WOODSTOCK {6} x WESTPORT {5}		★★★★	A1/A2	AB	49%	24	
29JE4418	DITTO {6}	Sexcel	721	164	111	654	51	79	130	0.12	0.22	4	1	2.87	-0.6	1.2	1	4.6	BETTIS {5} x JX THRASHER {6}		★★★	A2/A2	BB	40%	24	
29JE4444	DINO {6}		792	176	114	975	58	79	137	0.1	0.14	5.5	1.5	2.83	-1.4	-0.5	2	14.8	LAWSON x JX THRASHER {6}		★★★	A2/A2	BB	35%	24	
29JE4422	DEALER {6}		779	178	114	891	53	79	132	0.09	0.16	4.5	2.4	2.88	0	1.3	0.9	8.7	ARTHUR x JX THRASHER {6}		★★★	A2/A2	BB	37%	23	
29JE4275	BOOTS {5}	Sexcel	501	118	111	869	45	58	103	0.06	0.07	2.3	-0.4	2.95	-1.8	0	1.4	11.4	ALTAMONTRA {6} x JX STONEY {3}		★★	A2/A2	AB	48%	23	
29JE4273	BETTIS {5}		644	139	110	247	36	71	107	0.13	0.27	4	0.4	2.89	-1.5	0.7	1.6	8.7	ALTAMONTRA {6} x JX STONEY {3}		★★★	A2/A2	AB	48%	22	
29JE4276	BAZZAR {5}	Sexcel	558	129	110	1141	47	59	106	0.02	0.02	2.9	0.1	2.95	-1.3	0.4	1.3	9	ALTAMONTRA {6} x JX STONEY {3}		★★★	A2/A2	AB	48%	22	
29JE4320	ALVORD		628	139	109	465	40	71	111	0.11	0.22	3.2	-0.3	2.77	-1	-0.3	0.8	9.4	VJ GISLEV x GOT MAID		★★★	A1/A2	BB	61%	22	
29JE4270	LAWSON		572	124	111	503	37	58	95	0.09	0.15	4.4	1.7	3.03	0.5	1.2	1.2	7.8	JX DASHIELL {6} x GOT MAID		★★★★	A1/A2	BB	38%	25	
29JE4202	TAGGERES {4}		484	122	109	779	31	27	58	0.01	-0.05	4.7	1.7	2.8	0.9	2.3	1.1	12.9	BEAMER {3} x UNCLE LUKE	*	★★★★★	A2/A2	AB	34%	26	
29JE4272	DANBURY {5}	Sexcel	393	90	111	841	34	36	70	0.01	-0.02	3.3	1.4	3.08	-0.5	0.5	1.4	13.6	VICEROY x ENZO {3}		★★	A2/A2	BB	40%	23	

AUSTRALIAN JERSEY SIRES																										
NAAB	CODE NAME	BPI	HWI	SI	ASI	MILK	PRO	FAT	PRO%	FAT%	TEMPERAMENT	LIKEABILITY	SCS	MAST. RES.	SURVIVAL	DTR FERT.	GEST. LENGTH	MAM	PEDIGREE	TRANSITION RIGHT®	POLLED	BETA CASEIN	KAPPA CASEIN		PAGE	
29JE4394	CSCTRASK	364	320	824	158	479	25	13	0.2	-0.25	105	107	131	101		99	-3	113	ASKN x MATT	★★		A2/A2	BB			
29JE4313	CSCWOODSIDE	354	251	685	198	372	23	35	0.22	0.29	106	106	129	102	113	98	2	110	MATT x TAHBILK	★★		A2/A2	BB		28	
29JE4393	CSCJANGO-P	361	290	837	191	811	28	33	0.01	-0.2	103	106	131	103	107	99	-1	105	OLIVER-P x DAVID	★★	YES	A2/A2	BB			
29JE4298	CSCSKYWARD	318	260	584	178	-215	15	28	0.48	0.75	103	104	124	103	112	102	-2	105	MATT x CAIRNBONE	★★★		A2/A2	BB		28	
29JE4294	CSCBUSHFIELD-P	251	196	574	133	458	21	13	0.12	-0.22	106	107	120	99	107	99	-5	107	POLLEDGOLD PP x VALENTINO	★★	YES	A2/A2	BB			
29JE4465	LAVA	359	285	624	165	46	13	39	0.25	0.7	105	106	142	107	108	100	1	106	CSCJAMIEO x VOLCANO	★★★		A2/A2	BB			

TRAIT LEADERS

Data from CDCB (August 2023)

FERTILITY	MASTITIS RESISTANCE	MILK	FAT	PROTEIN	UDDERS (JUI)	DAUGHTER FERTILITY
CSCWOODSIDE	QUEST	TROOPER	WOBBLE	DINO	DINO	JAMMER
TROOPER	LAVA	BAZZAR	DITTO	DEALER	DANBURY	TAGGERES
CSCSKYWARD	CSCSKYWARD	JAMMER	DINO	WOBBLE	MOONWALK	LAWSON

ALVORDI 29JE4320 | FOREST GLEN GISLEV ALVORD-ET

VJ GISLEV x GOT MAID x BANCROFT

- Improves mastitis resistance
- Components King

Reg. Number: 000067650559 BBR: 100

Date of Birth: 2020-12-18

aAa: 243

Recessives/ Haplotypes: JH1F, JNSF, SMA F, TD, TL, TN, TS



CDCB 08/2023

Production Dtrs: 0 Herds: 0

Milk: +465 Lbs	77% Rel	Beta Casein: A1/A2
Pro: +40 Lbs	+0.11%	Kappa Casein: BB
Fat: +71 Lbs	+0.22%	EFI: 7.4
CMS:+628	JPI:+139	NMS:+608

Health & Fertility

PL:+3.2	72% Rel
LIV:-0.3	57% Rel
DPR:-1	70% Rel
SCS: 2.77	75% Rel
HCR:+0.8	59% Rel
CCR:-0.3	69% Rel
TransitionRight®	★★★★
Bull Fertility Conv	



Conformation Dtrs: 0 Herds: 0 PTAT Rel: 79%

		-2	-1	0	1	2
PTAT	0.80					
JUI	9.40					
ST	1.40 Tall					
SG	0.60 Strong					
DF	0.70 Open					
RA	-0.10 High Pins					
TW	-0.30 Narrow					
FA	1.10 Steep					
RLSV	-0.60 Sickie					
FUA	1.80 Strong					
UH	0.80 High					
UW	-0.20 Narrow					
UC	-0.10 Weak					
UD	2.30 Shallow					
FTP	0.20 Close					
TL	-1.00 Short					
RTP	0.40 Close					

BOOTS {5} | 29JE4275 | JX CAL-MART BOOTS {5}-ET

ALTAMONTRA {6} x JX STONEY {3} x MARK

- Good Production & Confirmation Sire
- Adds teat length

Reg. Number: 000067424764 BBR: 100

Date of Birth: 2020-06-15

aAa: 231

Recessives/ Haplotypes: JH1F, JNSF, SMA F, TD, TL, TN, TS



DAM: JX Cal-Mart Stony Barbe 321 (4) VG-81%

CDCB Breed Assn Type Data 08/2023

Production Dtrs: 0 Herds: 0

Milk: +869 Lbs	78% Rel	Beta Casein: A2/A2
Pro: +45 Lbs	+0.06%	Kappa Casein: AB
Fat: +58 Lbs	+0.07%	EFI: 9.3
CMS:+501	JPI:+118	NMS:+489

Health & Fertility

PL:+2.3	74% Rel
LIV:-0.4	64% Rel
DPR:-1.8	72% Rel
SCS: 2.95	77% Rel
HCR:+3.4	63% Rel
CCR:0	72% Rel
TransitionRight®	★★
Bull Fertility Conv	



Conformation Dtrs: 0 Herds: 0 PTAT Rel: 80%

		-2	-1	0	1	2
PTAT	1.40					
JUI	11.40					
ST	1.60 Tall					
SG	0.90 Strong					
DF	1.60 Open					
RA	-1.10 High Pins					
TW	1.50 Wide					
FA	0.60 Steep					
RLSV	0.50 Straight					
FUA	2.60 Strong					
UH	1.60 High					
UW	0.90 Wide					
UC	-0.10 Weak					
UD	2.10 Shallow					
FTP	1.00 Close					
TL	0.70 Long					
RTP	-0.10 Wide					

BAZZAR {5} | 29JE4276 | JX CAL-MART BAZZAR {5}-ET

ALTAMONTRA {6} x JX STONEY {3} x MARK

- Adds chest and body
- Adds teat length
- Production King

Reg. Number: 000067424767 BBR: 100

Date of Birth: 2020-06-18

aAa: 534

Recessives/ Haplotypes: JH1F, JNSF, SMA F, TD, TL, TN, TS



DAM: JX Cal-Mart Stony Barbe 321 (4) VG-81%

CDCB 08/2023

Production Dtrs: 0 Herds: 0

Milk: +1141 Lbs	78% Rel	Beta Casein: A2/A2
Pro: +47 Lbs	+0.02%	Kappa Casein: AB
Fat: +59 Lbs	+0.02%	EFI: 9.3
CMS:+558	JPI:+129	NMS:+550

Health & Fertility

PL:+2.9	75% Rel
LIV:+0.1	64% Rel
DPR:-1.3	72% Rel
SCS: 2.95	77% Rel
HCR:+3.7	63% Rel
CCR:+0.4	72% Rel
TransitionRight®	★★★★
Bull Fertility Conv	



Conformation Dtrs: 0 Herds: 0 PTAT Rel: 81%

		-2	-1	0	1	2
PTAT	1.30					
JUI	9.00					
ST	0.30 Tall					
SG	1.00 Strong					
DF	1.20 Open					
RA	-1.30 High Pins					
TW	1.20 Wide					
FA	0.40 Steep					
RLSV	0.40 Straight					
FUA	2.20 Strong					
UH	1.50 High					
UW	1.00 Wide					
UC	0.00 Strong					
UD	1.20 Shallow					
FTP	0.20 Close					
TL	0.70 Long					
RTP	-0.30 Wide					

DANBURY {5} | 29JE4272 | JX PINE-TREE DANBURY {5}-ET

VICEROY x ENZO {3} x WORLDCUP

- Outstanding Type & Udders
- High Production Sire

Reg. Number: 000067762309 BBR: 100

Date of Birth: 2020-03-11

aAa:

Recessives/ Haplotypes: JH1F, JNSF, SMA F, TD, TL, TN, TS



MGD of 29JE4272 DANBURY {5}

CDCB 08/2023

Production Dtrs: 0 Herds: 0

Milk: +841 Lbs	78% Rel	Beta Casein: A2/A2
Pro: +34 Lbs	+0.01%	Kappa Casein: BB
Fat: +36 Lbs	-0.02%	EFI: 10.5
CMS:+393	JPI:+90	NMS:+390

Health & Fertility

PL:+3.3	75% Rel
LIV:+1.4	65% Rel
DPR:-0.5	73% Rel
SCS: 3.08	77% Rel
HCR:+3.2	64% Rel
CCR:+0.5	73% Rel
TransitionRight®	★★
Bull Fertility Conv	



Conformation Dtrs: 0 Herds: 0 PTAT Rel: 80%

		-2	-1	0	1	2
PTAT	1.40					
JUI	13.60					
ST	1.50 Tall					
SG	1.10 Strong					
DF	0.20 Open					
RA	-1.30 High Pins					
TW	1.30 Wide					
FA	1.10 Steep					
RLSV	-0.20 Sickie					
FUA	3.60 Strong					
UH	1.40 High					
UW	-0.20 Narrow					
UC	-0.40 Weak					
UD	2.30 Shallow					
FTP	1.00 Close					
TL	-0.50 Short					
RTP	0.80 Close					

BETTIS {5} | 29JE4273 | JX CAL-MART BETTIS {5}-ET

ALTAMONTRA {6} x JX STONEY {3} x MARK

- High Type Sire
- Adds teat length

Reg. Number: 000067424769 BBR: 100

Date of Birth: 2020-06-18

aAa: 432

Recessives/ Haplotypes: JH1F, JNSF, SMA F, TD, TL, TN, TS



DAM: JX Cal-Mart Stony Barbe 321 (4) VG-81%

CDCB 08/2023

Production Dtrs: 0 Herds: 0

Milk: +247 Lbs	78% Rel	Beta Casein: A2/A2
Pro: +36 Lbs	+0.13%	Kappa Casein: AB
Fat: +71 Lbs	+0.27%	EFI: 9.3
CMS:+644	JPI:+139	NMS:+626

Health & Fertility

PL:+4	75% Rel
LIV:+0.4	64% Rel
DPR:-1.5	72% Rel
SCS: 2.89	77% Rel
HCR:+3.5	63% Rel
CCR:+0.7	72% Rel
TransitionRight®	★★★★
Bull Fertility Conv	



Conformation Dtrs: 0 Herds: 0 PTAT Rel: 80%

		-2	-1	0	1	2
PTAT	1.60					
JUI	8.70					
ST	-0.20 Short					
SG	0.50 Strong					
DF	1.60 Open					
RA	-1.10 High Pins					
TW	0.60 Wide					
FA	0.20 Steep					
RLSV	0.40 Straight					
FUA	1.90 Strong					
UH	1.60 High					
UW	1.40 Wide					
UC	0.70 Strong					
UD	0.70 Shallow					
FTP	0.80 Close					
TL	0.70 Long					
RTP	0.10 Close					

DEALER {6} | 29JE4422 | JX CAL-MART DEALER {6}-ET

ARTHUR x JX THRASHER {6} x STONEY

- Components King
- High CM\$ Sire

Reg. Number: 000067975168 BBR: 100

Date of Birth: 2022-07-05

aAa: 351

Recessives/ Haplotypes: JH1F, JNSF, SMA F, TD, TL, TN, TS



BULL: 29JE4422 JX Cal-Mart DEALER {6}-ET

CDCB 08/2023

Production Dtrs: 0 Herds: 0

Milk: +891 Lbs	73% Rel	Beta Casein: A2/A2
Pro: +53 Lbs	+0.09%	Kappa Casein: BB
Fat: +79 Lbs	+0.16%	EFI: 8.7
CMS:+779	JPI:+178	NMS:+762

Health & Fertility

PL:+4.5	70% Rel
LIV:+2.4	59% Rel
DPR:0	68% Rel
SCS: 2.88	72% Rel
HCR:+3.2	57% Rel
CCR:+1.3	68% Rel
TransitionRight®	★★★★
Bull Fertility Conv	



Conformation Dtrs: 0 Herds: 0 PTAT Rel: 77%

		-2	-1	0	1	2
PTAT	0.90					

DINO {6} | 29JE4444 | JX CAL-MART DINO (6)-ET

LAWSON x JX THRASHER (6) x STONEY

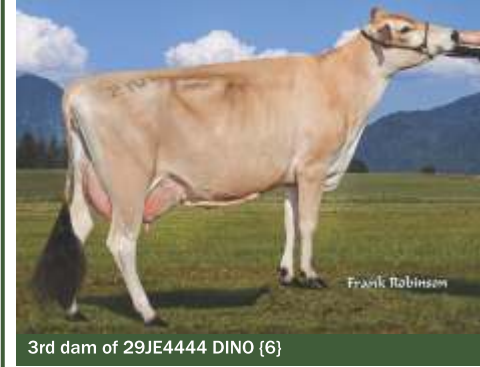
- Elite Udders • Long lasting cows
- Components King

Reg. Number: 000067975200 BBR: 100

Date of Birth: 2022-08-11

aAa: 423

Recessives/ Haplotypes: JH1F, JNSF, SMA F, TD, TL, TN, TS



3rd dam of 29JE4444 DINO (6)

CDCB 08/2023 Dtrs: 0 Herds: 0

Production

Milk: +975 Lbs	73% Rel	Beta Casein: A2/A2
Pro: +58 Lbs	+0.10%	Kappa Casein: BB
Fat: +79 Lbs	+0.14%	EFI: 9.5
CMS: +792	JPI: +176	NMS: +772

Health & Fertility

PL: +5.5	70% Rel
LIV: +1.5	58% Rel
DPR: -1.4	68% Rel
SCS: 2.83	73% Rel
HCR: +2.2	57% Rel
CCR: -0.5	68% Rel
TransitionRight®	★★★★
Bull Fertility Conv	



Conformation Dtrs: 0 Herds: 0 PTAT Rel: 77%

	-2	-1	0	1	2
PTAT	2.00				
JUI	14.80				
ST	1.20 Tall				
SG	1.10 Strong				
DF	0.80 Open				
RA	-0.70 High Pins				
TW	1.40 Wide				
FA	1.10 Steep				
RLSV	-0.30 Sickle				
FUA	3.10 Strong				
UH	1.10 High				
UW	0.00 Wide				
UC	1.10 Strong				
UD	2.40 Shallow				
FTP	2.30 Close				
TL	-0.30 Short				
RTP	2.10 Close				

LAWSONI | 29JE4270 | ABS 4465 LAWSON-ET

JX DASHIELL (6) x GOT MAID x DIMENSION

- High semen fertility • Adds strength
- Improves daughter fertility

Reg. Number: 003146074465 BBR: 100

Date of Birth: 2020-07-29

aAa: 432

Recessives/ Haplotypes: JH1F, JNSF, SMA F, TD, TL, TN, TS



BULL: 29JE4270 ABS 4465 LAWSON-ET

CDCB 08/2023 Dtrs: 0 Herds: 0

Production

Milk: +503 Lbs	78% Rel	Beta Casein: A1/A2
Pro: +37 Lbs	+0.09%	Kappa Casein: BB
Fat: +58 Lbs	+0.15%	EFI: 10
CMS: +572	JPI: +124	NMS: +560

Health & Fertility

PL: +4.4	74% Rel
LIV: +1.7	63% Rel
DPR: +0.5	72% Rel
SCS: 3.03	77% Rel
HCR: +3.3	63% Rel
CCR: +1.2	72% Rel
TransitionRight®	★★★★
Bull Fertility Conv	



Conformation Dtrs: 0 Herds: 0 PTAT Rel: 80%

	-2	-1	0	1	2
PTAT	1.20				
JUI	7.80				
ST	0.10 Tall				
SG	0.90 Strong				
DF	0.00 Open				
RA	-0.80 High Pins				
TW	1.20 Wide				
FA	0.70 Steep				
RLSV	-0.30 Sickle				
FUA	2.50 Strong				
UH	0.40 High				
UW	-0.50 Narrow				
UC	0.00 Strong				
UD	1.10 Shallow				
FTP	2.40 Close				
TL	-0.20 Short				
RTP	1.20 Close				

DITTO {6} | 29JE4418 | JX CAL-MART DITTO (6)-ET

BETTIS (5) x JX THRASHER (6) x STONEY

- Adds teat length
- Components King

Reg. Number: 000067975144 BBR: 100

Date of Birth: 2022-05-25

aAa: 231

Recessives/ Haplotypes: JH1F, JNSF, TD, TL



3rd dam of 29JE4418 DITTO (6)

CDCB 08/2023 Dtrs: 0 Herds: 0

Production

Milk: +654 Lbs	73% Rel	Beta Casein: A2/A2
Pro: +51 Lbs	+0.12%	Kappa Casein: BB
Fat: +79 Lbs	+0.22%	EFI: 9.1
CMS: +721	JPI: +164	NMS: +700

Health & Fertility

PL: +4	71% Rel
LIV: +1	60% Rel
DPR: -0.6	69% Rel
SCS: 2.87	73% Rel
HCR: +3.2	59% Rel
CCR: +1.2	69% Rel
TransitionRight®	★★★★
Bull Fertility Conv	



Conformation Dtrs: 0 Herds: 0 PTAT Rel: 78%

	-2	-1	0	1	2
PTAT	1.00				
JUI	4.60				
ST	1.20 Tall				
SG	0.90 Strong				
DF	1.40 Open				
RA	0.10 Sloped				
TW	0.80 Wide				
FA	0.70 Steep				
RLSV	0.60 Straight				
FUA	1.20 Strong				
UH	0.90 High				
UW	0.60 Wide				
UC	0.40 Strong				
UD	0.70 Shallow				
FTP	0.20 Close				
TL	1.00 Long				
RTP	-0.40 Wide				

MOONWALKI | 29JE4362 | ABS HE MOONWALK-ET

JOINER x DEMOS-P x MALDINI

- Elite Udders • High Cheese Merit
- Improves daughter fertility

Reg. Number: 003236266479 BBR: 100

Date of Birth: 2021-10-06

aAa:

Recessives/ Haplotypes: HH, JH1F, JNSF, SMA F, TD, TL, TN, TS



BULL: 29JE4362 ABS He MOONWALK-ET

CDCB 08/2023 Dtrs: 0 Herds: 0

Production

Milk: +705 Lbs	74% Rel	Beta Casein: A1/A2
Pro: +34 Lbs	+0.04%	Kappa Casein: BB
Fat: +70 Lbs	+0.16%	EFI: 8.9
CMS: +598	JPI: +137	NMS: +590

Health & Fertility

PL: +3	70% Rel
LIV: +1.6	58% Rel
DPR: +0.1	68% Rel
SCS: 2.95	73% Rel
HCR: +3.2	57% Rel
CCR: +0.6	68% Rel
TransitionRight®	★★★★
Bull Fertility Conv	



Conformation Dtrs: 0 Herds: 0 PTAT Rel: 78%

	-2	-1	0	1	2
PTAT	1.80				
JUI	14.10				
ST	1.50 Tall				
SG	0.60 Strong				
DF	1.90 Open				
RA	0.10 Sloped				
TW	0.70 Wide				
FA	0.70 Steep				
RLSV	-0.30 Sickle				
FUA	2.60 Strong				
UH	2.10 High				
UW	0.90 Wide				
UC	0.90 Strong				
UD	1.70 Shallow				
FTP	1.50 Close				
TL	0.20 Long				
RTP	0.80 Close				

JAMMER | 29JE4305 | CAL-MART JAMMER-ET

WOODSTOCK (6) x WESTPORT (5) x HJORT

- Improves mastitis resistance
- Improves daughter fertility • Adds teat length

Reg. Number: 000067504833 BBR: 100

Date of Birth: 2021-01-03

aAa:

Recessives/ Haplotypes: JH1F, JNSF, SMA F, TD, TL, TN, TS



BULL: 29JE4305 Cal-Mart JAMMER-ET

CDCB 08/2023 Dtrs: 0 Herds: 0

Production

Milk: +1041 Lbs	77% Rel	Beta Casein: A1/A2
Pro: +51 Lbs	+0.06%	Kappa Casein: AB
Fat: +74 Lbs	+0.11%	EFI: 8.6
CMS: +758	JPI: +177	NMS: +742

Health & Fertility

PL: +4.3	72% Rel
LIV: +3.6	62% Rel
DPR: +0.4	69% Rel
SCS: 2.76	76% Rel
HCR: +1.3	60% Rel
CCR: +0.5	69% Rel
TransitionRight®	★★★★
Bull Fertility Conv	



Conformation Dtrs: 0 Herds: 0 PTAT Rel: 80%

	-2	-1	0	1	2
PTAT	1.40				
JUI	11.90				
ST	2.20 Tall				
SG	0.60 Strong				
DF	1.80 Open				
RA	-0.80 High Pins				
TW	1.00 Wide				
FA	1.00 Steep				
RLSV	0.00 Straight				
FUA	2.00 Strong				
UH	2.10 High				
UW	0.70 Wide				
UC	0.30 Strong				
UD	1.70 Shallow				
FTP	1.10 Close				
TL	1.60 Long				
RTP	0.10 Close				

QUEST {4} | 29JE4363 | JX ABS HE QUEST (4)-ET

JUGGERNAUT (6) x GOT MAID x TRANSFORMER

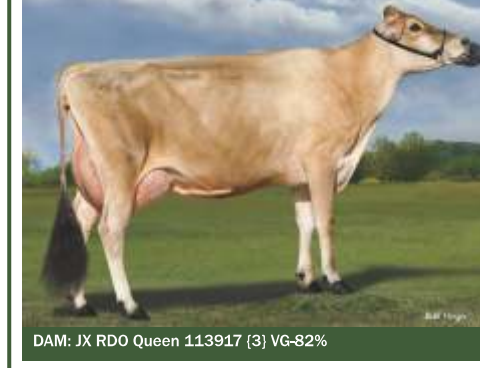
- Improves mastitis resistance • Long lasting cows
- High Transition Right Sire

Reg. Number: 003236266481 BBR: 100

Date of Birth: 2021-10-08

aAa: 432

Recessives/ Haplotypes: HH, JH1F, JNSF, SMA F, TD, TL, TN, TS



DAM: JX RDO Queen 113917 (3) VG-82%

CDCB 08/2023 Dtrs: 0 Herds: 0

Production

Milk: +593 Lbs	75% Rel	Beta Casein: A2/A2
Pro: +43 Lbs	+0.10%	Kappa Casein: BB
Fat: +68 Lbs	+0.18%	EFI: 9.5
CMS: +750	JPI: +162	NMS: +729

Health & Fertility

PL: +5.2	71% Rel
LIV: +0.4	60% Rel
DPR: -0.2	68% Rel
SCS: 2.71	73% Rel
HCR: +1.3	58% Rel
CCR: +0.8	68% Rel
TransitionRight®	★★★★
Bull Fertility Conv	



Conformation Dtrs: 0 Herds: 0 PTAT Rel: 77%

	-2	-1	0	1	2
PTAT	0.70				
JUI	6.40				
ST	-0.20 Short				
SG	-0.10 Frail				
DF	0.30 Open				
RA	-0.90 High Pins				
TW	-0.30 Narrow				
FA	0.80 Steep				

TAGGERES {4} | 29JE4202 | JX RDO TAGGERES {4}-ET
BEAMER {3} x UNCLE LUKE

- Supreme Transition Right Sire
- Improves daughter fertility
- Long lasting cows

Reg. Number: 003137788997 BBR: 91
Date of Birth: 2019-02-19
aAa:
Recessives/ Haplotypes: JH1F, JNSF, TD, TL, TN, TS




Photo not available

CDCB 08/2023

Production Dtrs: 0 Herds: 0

Milk: +779 Lbs	80% Rel	Beta Casein: A2/A2
Pro: +31 Lbs	+0.01%	Kappa Casein: AB
Fat: +27 Lbs	-0.05%	EFI: 8.5
CMS:+484	JPI:+122	NMS:+476

Health & Fertility

PL:+4.7	71% Rel
LIV:+1.7	57% Rel
DPR:+0.9	68% Rel
SCS: 2.8	76% Rel
HCR:+3.6	59% Rel
CCR:+2.3	68% Rel
TransitionRight®	★★★★★
Bull Fertility Conv	★

Conformation Dtrs: 0 Herds: 0 PTAT Rel: 78%

	-2	-1	0	1	2
PTAT					
JUI					
ST					
SG					
DF					
RA					
TW					
FA					
RLSV					
FUA					
UH					
UW					
UC					
UD					
FTP					
TL					
RTP					

WOBBLE | 29JE4349 | CAL-MART WOBBLE-ET
JOINER x MIGHTY x WORLD CUP

- Adds chest and body
- Components King
- Dairy Strength

Reg. Number: 000067484990 BBR: 100
Date of Birth: 2021-09-21
aAa:
Recessives/ Haplotypes: HH, JH1F, JNSF, SMA F, TD, TL, TN, TS



DAM: Cal-Mart Mighty Windy 1392 {6}-ET

CDCB 08/2023

Production Dtrs: 0 Herds: 0

Milk: +808 Lbs	75% Rel	Beta Casein: A1/A2
Pro: +52 Lbs	+0.10%	Kappa Casein: BB
Fat: +82 Lbs	+0.19%	EFI: 8.8
CMS:+633	JPI:+147	NMS:+617

Health & Fertility

PL:+2.7	71% Rel
LIV:+1.2	60% Rel
DPR:-0.5	68% Rel
SCS: 2.97	74% Rel
HCR:+2.5	58% Rel
CCR:+0.5	68% Rel
TransitionRight®	★★★
Bull Fertility Conv	

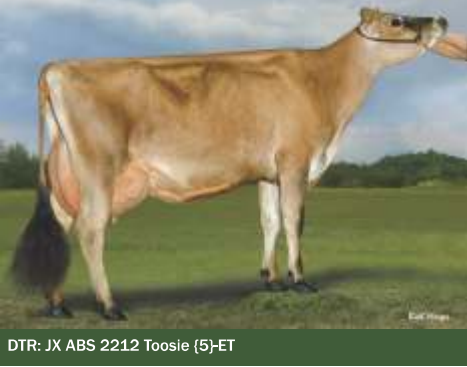
Conformation Dtrs: 0 Herds: 0 PTAT Rel: 78%

	-2	-1	0	1	2
PTAT					
JUI					
ST					
SG					
DF					
RA					
TW					
FA					
RLSV					
FUA					
UH					
UW					
UC					
UD					
FTP					
TL					
RTP					

TROOPER {4} | 29JE4204 | JX DODAN LH TROOPER {4}
MESQUITE x LISTOWEL-P x NIKON

- Impressive Production
- Elite Sire Fertility

Reg. Number: 003203116924 BBR: 100
Date of Birth: 2019-01-13
aAa: 345
Recessives/ Haplotypes: JH1F, JNSF, SMA F, TD, TL, TN, TS



DTR: JX ABS 2212 Toosle {5}-ET

CDCB 08/2023

Production Dtrs: 142 Herds: 17

Milk: +1220 Lbs	94% Rel	Beta Casein: A2/A2
Pro: +51 Lbs	+0.03%	Kappa Casein: BB
Fat: +65 Lbs	+0.03%	EFI: 9.2
CMS:+657	JPI:+147	NMS:+647

Health & Fertility

PL:+3.6	82% Rel
LIV:+0.9	73% Rel
DPR:-0.1	78% Rel
SCS: 2.88	89% Rel
HCR:-0.7	83% Rel
CCR:+0.5	79% Rel
TransitionRight®	★★★★★
Bull Fertility Conv	★★★★★

Conformation Dtrs: 84 Herds: 7 PTAT Rel: 92%

	-2	-1	0	1	2
PTAT					
JUI					
ST					
SG					
DF					
RA					
TW					
FA					
RLSV					
FUA					
UH					
UW					
UC					
UD					
FTP					
TL					
RTP					

WESTPORT {5} | 29JE4117 | JX CAL-MART WESTPORT {5}-ET
WORLD CUP {4} x FASTRACK x VOLCANO

- Improves mastitis resistance
- Adds teat length
- Exceptional Daughters in Milk in SA

Reg. Number: 000067374603 BBR: 100
Date of Birth: 2017-07-30
aAa: 561
Recessives/ Haplotypes: JH1F, JNSF, TD, TL, TN



DTR: Four J Westport Hailee 18798 {6} VG-81%

IB-M/USA 08/2023

Production Dtrs: 2692 Herds: 130

Milk: +395 Lbs	99% Rel	Beta Casein: A2/A2
Pro: +38 Lbs	+0.11%	Kappa Casein: AB
Fat: +61 Lbs	+0.19%	EFI: 9.7
CMS:+610	JPI:+138	NMS:+590

Health & Fertility

PL:+4	93% Rel
LIV:+2.1	75% Rel
DPR:-0.4	95% Rel
SCS: 2.73	99% Rel
HCR:-0.4	93% Rel
CCR:-0.1	95% Rel
TransitionRight®	★★★★★
Bull Fertility Conv	★

Conformation Dtrs: 1642 Herds: 81 PTAT Rel: 99%

	-2	-1	0	1	2
PTAT					
JUI					
ST					
SG					
DF					
RA					
TW					
FA					
RLSV					
FUA					
UH					
UW					
UC					
UD					
FTP					
TL					
RTP					

Valiant™ UDDER CARE

Invest well in udder care to ensure your farm can produce large volumes of high quality, clean milk.

PRE-MILKING

Valiant™ FOAM-ULTRA

Simply the best teat dip you can use to clean and disinfect your cows before milking!



POST-MILKING

Valiant™ BARRIER
Valiant™ VERSATILE

Not one, but two post-milking products available to suit all needs, ensuring your cows' teats have the ultimate protection.

The properties of Valiant™ - How does your product compare?

Property	Valiant™ BARRIER	Valiant™ VERSATILE
Instant antibacterial activity	Yes	No
Proven 5 log antibacterial efficacy	Yes	No
Excellent skin conditioning	No	Yes
Extended antibacterial action	No	Yes
Twin antibacterial agents	No	Yes
Physical barrier	No	Yes

CSCWOODSIDE

Matt x Tahbilk x ELTON

GELBEADO PARK WOODSIDE

Bull ID: CSCWOODSIDE

NASIS: 29JJT22



Sire: WILSONVIEW IF MATT

Dam: GELBEADO PARK TAHBILK COWSLIP 5435 EX-93

MGD: GELBEADO PARK ELTON COWSLIP 4317

Breeder: PA & LM MUMFORD, WON WRON, VIC



BPI
354
72%

HWI
251
60%

SI
685
65%

ASI
198
78%

- One of the most popular sires around the world in 2022
- Exported more than 20,000 units incl. to South Africa & NZ
- High Aust Semen Fertility
- #2 Type sire in Australia



DAM: GELBEADO PARK TAHBILK COWSLIP 5435 EX-93

ABV 08/23 78% Rel		Daughters: G Herds: G	
Protein	23kg	Survival	107 60%
Protein %	+0.22%	Gestation Length	+2 93%
Milk	+372	Cell Count	129 70%
Fat	35kg	Mastitis Resistance	102 68%
Fat %	+0.29%	Daughter Fertility	98 61%
Milking Speed	103 68%	Feed Saved	-77 35%
Temperament	106 68%		
Likeability	106 68%		

AUS Type 08/23 68% Rel		Daughters: G Herds: G	
Overall Type			111
Mammary System			110
Stature			104
Angularity			106
Body Depth			105
Chest Width			105
Pin Width			103
Pin Set			104
Foot Angle			101
Rear Set			101
Rear View			102
Udder Depth			102
Fore Udder Att.			107
Rear Udder Att. (H)			105
Rear Udder Att. (W)			104
Centre Ligament			106
Front Teat Pl.			108
Rear Teat Pl.			104
Teat Length			103

CSCSKYWARD

Matt x Cairnbone x Valerian

RANLEIGH SKYWARD

Bull ID: CSCSKYWARD

NASIS: 29JJT21

Sire: WILSONVIEW IF MATT

Dam: RANLEIGH CAIRNBONE LADY 5249 EX-90

MGD: RANLEIGH VALERIAN LADY 3467 VG-87

Breeder: RANLEIGH FARMS, FOSTER, VIC



BPI
318
73%

HWI
260
62%

SI
584
66%

ASI
178
78%

- High daughter fertility
- High mastitis resistance
- Adds teat length



DAM: RANLEIGH CAIRNBONE LADY 5249 EX-90

ABV 08/23 78% Rel		Daughters: G Herds: G	
Protein	15kg	Survival	107 63%
Protein %	+0.48%	Gestation Length	-2 813%
Milk	-215	Cell Count	124 70%
Fat	28kg	Mastitis Resistance	103 71%
Fat %	+0.75%	Daughter Fertility	102 63%
Milking Speed	102 71%	Feed Saved	-31 35%
Temperament	103 71%		
Likeability	104 71%		

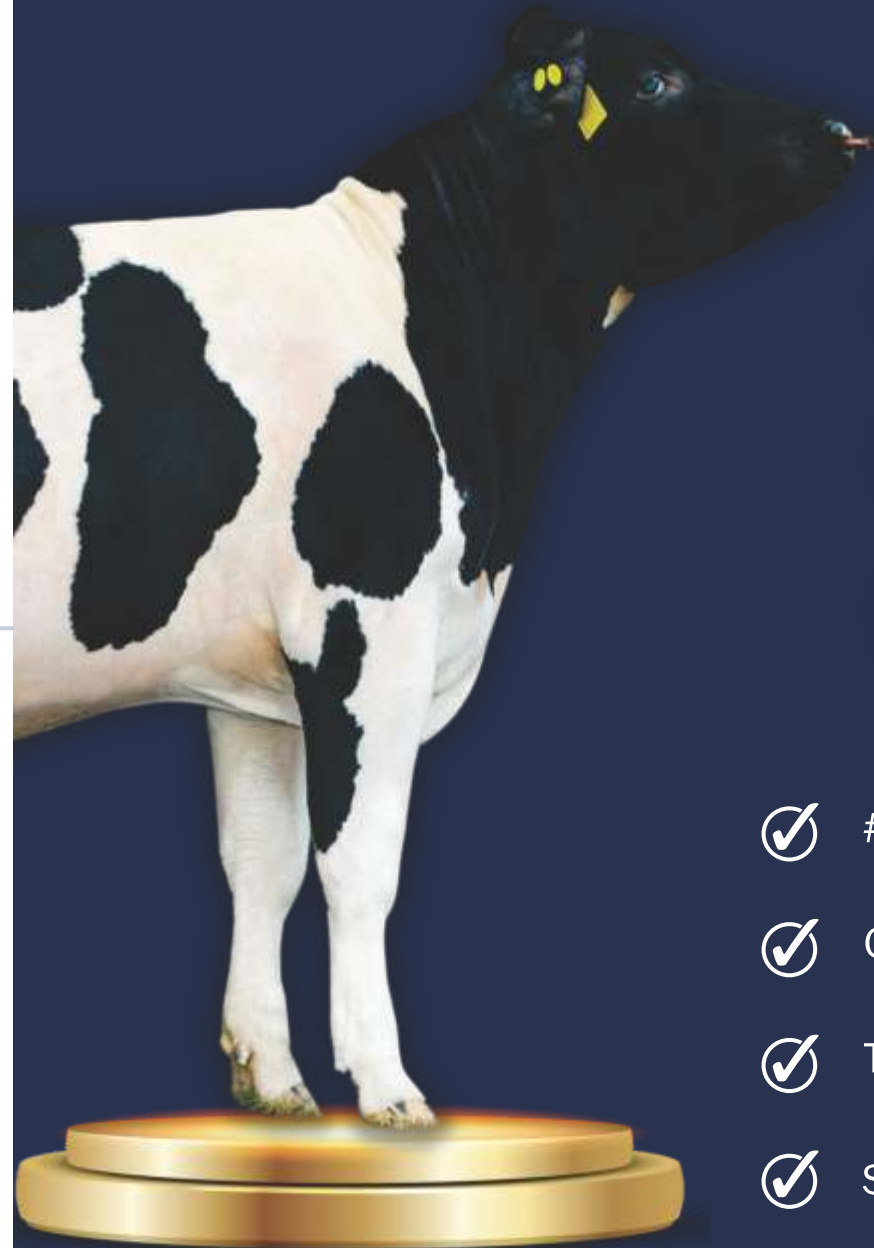
AUS Type 08/23 66% Rel		Daughters: G Herds: G	
Overall Type			104
Mammary System			105
Stature			101
Angularity			104
Body Depth			103
Chest Width			103
Pin Width			98
Pin Set			100
Foot Angle			98
Rear Set			101
Rear View			100
Udder Depth			99
Fore Udder Att.			105
Rear Udder Att. (H)			100
Rear Udder Att. (W)			101
Centre Ligament			103
Front Teat Pl.			105
Rear Teat Pl.			98
Teat Length			103



Goonhilly COVERACK

SEB x HYLKE x CORSAIR

Top of the Rankings AGAIN!!



#1 £PLI 354

#1 £SCI 424

#1 £ACI 420

- ✓ #2 for Fat% +0.24 & Protein% +0.16
- ✓ Great Udder Health at -5 SCC
- ✓ Tremendous Lifespan at +79
- ✓ Superb Daughter Fertility at +2.6

Available now in



NAAB	SHORT NAME	SEXCEL	PLI	ACI	SCI	MILK	FAT	FAT%	PRO	PROTEIN%	ENVIRO COW	DIRECT CE	LIFESPAN (DAYS)	SCS	DTR FERTILITY	GEST LEN (D)	SCC	LAMENESS	DIGITAL DERMATITIS	CALF SURVIVAL	TYPE	MAMMARY	LEGS & FEET	AHI	MAINTENANCE	BCS	TRANSITION RIGHT®	LOCOMOTION	MASTITIS	PEDIGREE	PAGE
PROVEN SIRES																															
29H017410	SAMSON	Sexcel	196	240	233	174	7.3	-0.01	8.7	0.04	1.4	1.8	73	2	-4.6	-3	2	0.7	0.5	1.5	0.67	0.7	0.71	100	0	-0.97	★★★★★	0.27	-1	CATLANE CHAD x TITTENSER HYLKE	35
29H017418	JACOB		167	244	249	-82	5.9	0.11	5.2	0.11	1	1.3	49	3	-3.3	1	3	-1.3	-0.1	2.8	0.99	1.02	0.6	101	4	-0.05	★★★★★	0.48	-1	CATLANE CHAD x BLACKISLE BENLOYAL	34
29H017457	ELJAH*RC		102	222	255	-18	3.2	0.04	-0.3	0	0.7	0.2	27	1	2.9	-1	1	-1.4	-0.4	0.7	0.62	0.63	-0.17	101	-9	0.31	★★★★★	0.04	-1	LANGLEY EVOLUTION x NEREWATER TIPTOP	34
GENOMIC SIRES																															
29H020365	COVERACK	Sexcel	354	420	424	-119	13.3	0.24	7.9	0.16	1.8	1.1	79	-5	2.6	0	-5	-0.7	0.1	3.6	0.41	0.3	0.41	103	3	0.24	★★★★★	0.07	-2	GOONHILLY SEB x TITTENSER HYLKE	33
29H020344	CORNELLY	Sexcel	304	345	338	247	12.2	0.01	13.1	0.06	2	1.2	61	4	0.1	-1	4	0.4	0.1	2	0.28	0.21	0.65	104	-6	-1.32	★★★★★	0.44	0	LAKEMEAD JINGLE x CATLANE CHAD	33
29H020184	VERITAS	Sexcel	273	314	318	-4	3.8	0.04	7.4	0.1	1.4	0.9	58	-8	-4	-2	-8	0.8	0.6	3.7	0.92	0.87	0.95	101	-5	0.02	★★★★★	0.86	-3	BEAUFORT KARACTACUS x CATLANE CHAD	35
29H020363	PADDINGTON		289	351	357	-27	7.5	0.1	4.9	0.08	1.7	1.2	82	-1	2.3	-1	-1	0.5	0.2	2.7	1.21	0.97	1.29	101	-9	-1.4	★★★★★	1.02	-1	INCH PERSISTENT x CATLANE CHAD	35
29H020364	BRAYER	Sexcel	196	275	294	86	9.8	0.07	7.2	0.06	0.9	0.8	9	2	2.4	-1	2	-0.2	0.3	1.1	0	0	0.27	101	0	-0.76	★★★★★	0.02	-1	GOONHILLY BORIS x CATLANE CALEB	32
29H020345	DOUBLE		164	259	273	-16	2.2	0.03	4.1	0.06	1.1	1.1	58	7	1.5	1	7	-0.7	0.1	2.4	0.96	1	0.36	103	-5	-0.82	★★★★★	0	0	INCH DUNGANNON x TITTENSER HYLKE	33
29H020027	CASPER		131	214	237	-14	5.7	0.07	2.8	0.04	0.8	0.6	21	1	-3.2	-1	1	0.5	0.2	1.6	0.49	0.36	0.75	102	-6	-0.02	★★★★★	0.67	-1	AIRTREE PERCY x DEANGATE PRINCE 2	32
29H020177	EPIC	Sexcel	122	219	244	-191	1.7	0.12	0.7	0.1	0.3	1.4	37	6	0.9	-1	6	-0.4	0	2.5	1.51	1.48	0.58	102	10	1.02	★★★★★	0.3	-1	COLLYCROFT SOLO x LAKEMEAD PINNACLE	34
29H017460	BARACK		111	195	202	165	12.5	0.06	7.9	0.03	0.8	0.2	24	0	-3.4	0	0	-2.7	-0.9	1.1	0.28	0.61	-0.73	99	8	0.24	★★★★★	-1.25	0	KIRKBY PREMIER x PIET ADEMA 186	32

TRAIT LEADERS

Data from AHDB (August 2023)

MASTITIS RESISTANCE	MILK	FAT	PROTEIN	UDDERS (JUI)	DAUGHTER FERTILITY
VERITAS	CORNELLY	COVERACK	CORNELLY	EPIC	ELJAH*RC
COVERACK	SAMSON	BARACK	SAMSON	JACOB	COVERACK
PADDINGTON	BARACK	CORNELLY	COVERACK	DOUBLE	BRAYER



BARACK | BF1181 | GOONHILLY BARACK

- Exceptional Fat and Protein Sire

Reg. Number: 387868101081
Recessives: HH1T, HH2T, HH3T, HH4T, HH5T, HH6T, RC, TC, TD, TL, TN, TP, TS, TV, TY

PREMIER x PIET ADEMA x HILTON



BULL: 29H017460-Goonhilly BARACK-17mths

Production	Date: Aug 8 2023	Source: AHDB
PLI: 111	65% Rel	ACI: 195
Dtrs: 0	Prod Herds: 0	SCI: 202
Milk: +165 Kgs	68% Rel	
Fat: +12.5 Kgs	+0.06%	Beta Casein: A1/A1
Protein: +7.9 Kgs	+0.03%	Kappa Casein: AA

Management Traits	Date: Aug 8 2023	Source: AHDB
Dtr Fertility	-3.4	Below Ave
Lifespan (days)	24	Above Ave
Direct CE	0.2	Above Ave
Maternal CE	0.5	Above Ave
SCC	0	Non-Improver
Mastitis	0	Non-Improver
Milk Spd	0.55	Above Ave
Temperment	1.18	Above Ave
Locomotion	-1.25	Below Ave
BCS	0.24	Above Ave
Maintenance	8 Kgs	Increased
TB Advantage	0.2	Improver

TransitionRight® ★★★★★

Conformation Dtrs: 0 Herds: 0 Rel: 58%

Type	-2	-1	0	1	2	Score	Quality
Type						0.28	Excellent
Mammary						0.61	Excellent
Legs & Feet						-0.73	Poor
Stature						0.97	Tall
Chest Width						0.18	Wide
Body Depth						0.44	Deep
Angularity						0.21	Angular
Rump Angle						0.37	Sloped
Rump Width						-0.01	Narrow
Rear Legs						-1.34	Straight
Foot Angle						1.17	Steep
Fore Udder						-0.12	Loose
Rear Udder						0.25	High
Udder Support						0.67	Strong
Udder Depth						0.10	Shallow
Front Teat PI						0.28	Close
Teat Length						0.20	Long
Rear Teat PI						0.80	Close

CORNELLY | BF1249 | GOONHILLY CORNELLY

- One of the top selling global Friesians in the world today
- Son of former #1 Friesian, Lakemead Jingle
- Balance of production, health & type

Reg. Number: 390250300002
Recessives: HH1T, HH2T, HH3T, HH4T, HH5T, HH6T, MWT, TC, TD, TL, TN, TP, TV, TY

JINGLE x CALEB x HILTON



BULL: 29H020344-Goonhilly CORNELLY-16mths

Production	Date: Aug 8 2023	Source: AHDB
PLI: 304	65% Rel	ACI: 345
Dtrs: 0	Prod Herds: 0	SCI: 338
Milk: +247 Kgs	68% Rel	
Fat: +12.2 Kgs	+0.01%	Beta Casein: A1/A1
Protein: +13.1 Kgs	+0.06%	Kappa Casein: AA

Management Traits	Date: Aug 8 2023	Source: AHDB
Dtr Fertility	0.1	Above Ave
Lifespan (days)	61	Above Ave
Direct CE	1.2	Above Ave
Maternal CE	0.6	Above Ave
SCC	4	Non-Improver
Mastitis	0	Non-Improver
Milk Spd	-0.33	Below Ave
Temperment	0.33	Above Ave
Locomotion	0.44	Above Ave
BCS	-1.32	Below Ave
Maintenance	-6 Kgs	Reduced
TB Advantage	2.1	Improver

TransitionRight® ★★★★★

Conformation Dtrs: 0 Herds: 0 Rel: 56%

Type	-2	-1	0	1	2	Score	Quality
Type						0.28	Excellent
Mammary						0.21	Excellent
Legs & Feet						0.65	Excellent
Stature						0.36	Tall
Chest Width						-1.03	Narrow
Body Depth						0.01	Deep
Angularity						1.20	Angular
Rump Angle						-0.03	High
Rump Width						0.47	Wide
Rear Legs						-0.57	Straight
Foot Angle						0.02	Steep
Fore Udder						-0.37	Loose
Rear Udder						1.13	High
Udder Support						0.51	Strong
Udder Depth						-0.42	Deep
Front Teat PI						0.08	Close
Teat Length						1.02	Long
Rear Teat PI						0.00	Close

BRAYER | BF1263 | GOONHILLY BRAYER

- Milk and component improver with exceptional daughter fertility
- Adds dairy character and teat length
- No Chad bloodlines

Reg. Number: 390250400087
Recessives: HH1T, HH2T, HH3T, HH4T, HH5T, HH6T, MWT, TC, TD, TL, TN, TP, TR, TV, TY

BORIS x CALEB x HILTON



BULL: 29H020364-Goonhilly BRAYER-12mths

Production	Date: Aug 8 2023	Source: AHDB
PLI: 196	64% Rel	ACI: 275
Dtrs: 0	Herds: 0	SCI: 294
Milk: +86 Kgs	67% Rel	
Fat: +9.8 Kgs	+0.07%	Beta Casein: A1/A1
Protein: +7.2 Kgs	+0.06%	Kappa Casein: AB

Management Traits	Date: Aug 8 2023	Source: AHDB
Dtr Fertility	2.4	Above Ave
Lifespan (Days)	9	Above Ave
Direct CE	0.8	Above Ave
Maternal CE	0.3	Above Ave
SCC	2	Non Improver
Mastitis	-1	Improver
Milk Speed	-0.14	Below Ave
Temperment	0.21	Above Ave
Locomotion	0.02	Above Ave
Body Cond	-0.76	Below Ave
Maintenance	0 Kgs	Increased Size
TB Advantage	-0.9	Non Improver

TransitionRight® ★★★★★



Conformation Dtrs: 0 Herds: 0 Rel: 53%

Type	-2	-1	0	1	2	Score	Quality
Type						0.00	Excellent
Mammary						0.00	Excellent
Legs & Feet						0.27	Excellent
Stature						0.38	Tall
Chest Width						-0.26	Narrow
Body Depth						0.40	Deep
Angularity						0.77	Angular
Rump Angle						0.15	Sloped
Rump Width						-0.14	Narrow
Rear Legs						0.04	Sickle
Foot Angle						-0.22	Low
Fore Udder						-0.49	Loose
Rear Udder						0.08	High
Udder Support						0.47	Strong
Udder Depth						-0.80	Deep
Front Teat PI						0.54	Close
Teat Length						0.88	Long
Rear Teat PI						0.45	Close

COVERACK | BF1262 | GOONHILLY COVERACK

- The #1 Genomic Friesian sire in the world
- Exceptional components and health traits
- Balanced type linear with added teat length

Reg. Number: 390250300107
Recessives: HH1T, HH2T, HH3T, HH4T, HH5T, HH6T, MWT, RC, TC, TD, TL, TN, TP, TR, TV, TY

SEB x HYLKE x CORSAIR



BULL: 29H020365-Goonhilly COVERACK-12mths

Production	Date: Aug 8 2023	Source: AHDB
PLI: 354	63% Rel	ACI: 420
Dtrs: 0	Herds: 0	SCI: 424
Milk: -119 Kgs	67% Rel	
Fat: +13.3 Kgs	+0.24%	Beta Casein: A1/A1
Protein: +7.9 Kgs	+0.16%	Kappa Casein: AB

Management Traits	Date: Aug 8 2023	Source: AHDB
Dtr Fertility	2.6	Above Ave
Lifespan (Days)	79	Above Ave
Direct CE	1.1	Above Ave
Maternal CE	0.3	Above Ave
SCC	-5	Improver
Mastitis	-2	Improver
Milk Speed	0.1	Above Ave
Temperment	1	Above Ave
Locomotion	0.07	Above Ave
Body Cond	0.24	Above Ave
Maintenance	3 Kgs	Increased Size
TB Advantage	2.2	Improver

TransitionRight® ★★★★★



Conformation Dtrs: 0 Herds: 0 Rel: 53%

Type	-2	-1	0	1	2	Score	Quality
Type						0.41	Excellent
Mammary						0.30	Excellent
Legs & Feet						0.41	Excellent
Stature						0.47	Tall
Chest Width						-0.01	Narrow
Body Depth						-0.31	Shallow
Angularity						0.03	Angular
Rump Angle						-0.80	High
Rump Width						-0.29	Narrow
Rear Legs						-0.72	Straight
Foot Angle						-0.05	Low
Fore Udder						-0.17	Loose
Rear Udder						0.08	High
Udder Support						0.19	Strong
Udder Depth						0.04	Shallow
Front Teat PI						0.23	Close
Teat Length						0.94	Long
Rear Teat PI						0.46	Close

CASPER | BF1196 | DEANGATE CASPER

- Son of the world famous Deangate Cindy BFE96 (50) LP90
- Positive fat & protein percentages
- No Chad bloodlines

Reg. Number: 164923602300
Recessives: HH1T, HH2T, HH3T, HH4T, HH5T, HH6T, MWT, TC, TD, TL, TN, TP, TV, TY

PERCY x PRINCE 2 x BULLION



DAM: Deangate Cindy 32-8yrs, BFE96 (5), 6 Lactations

Production	Date: Aug 8 2023	Source: AHDB
PLI: 131	64% Rel	ACI: 214
Dtrs: 0	Prod Herds: 0	SCI: 237
Milk: -14 Kgs	67% Rel	
Fat: +5.7 Kgs	+0.07%	Beta Casein: A1/A1
Protein: +2.8 Kgs	+0.04%	Kappa Casein: AB

Management Traits	Date: Aug 8 2023	Source: AHDB
Dtr Fertility	-3.2	Below Ave
Lifespan (days)	21	Above Ave
Direct CE	0.6	Above Ave
Maternal CE	0.2	Above Ave
SCC	1	Non-Improver
Mastitis	-1	Improver
Milk Spd	0.7	Above Ave
Temperment	0.39	Above Ave
Locomotion	0.67	Above Ave
BCS	-0.02	Below Ave
Maintenance	-6 Kgs	Reduced
TB Advantage	1.6	Improver

TransitionRight® ★★★★★

Conformation Dtrs: 0 Herds: 0 Rel: 54%

Type	-2	-1	0	1	2	Score	Quality
Type						0.49	Excellent
Mammary						0.36	Excellent
Legs & Feet						0.75	Excellent
Stature						-0.62	Short
Chest Width						-0.28	Narrow
Body Depth						-0.37	Shallow
Angularity						-0.08	Thick
Rump Angle						-0.57	High
Rump Width						-0.02	Narrow
Rear Legs						-1.37	Straight
Foot Angle						1.23	Steep
Fore Udder						0.08	Strong
Rear Udder						0.89	High
Udder Support						0.12	Strong
Udder Depth						-0.14	Deep
Front Teat PI						-0.10	Wide

ELIJAH*RC | BF1179 | GOONHILLY ELIJAH RC

- Exceptional daughter fertility from a Proven bull
- Positive components from over 300 daughters
- Quality Proven udders with added teat length

Reg. Number: 387868601065
 Recessives: HH1T, HH2T, HH3T, HH4T, HH5T, HH6T, RC, TC, TD, TL, TN, TS, TV, TY
 EVOLUTION x TIPTOP x BONUS



BULL: 29H017457-Goonhilly ELIJAH-18mths

Production	Date: Aug 8 2023	Source: AHDB
PLI: 102	86% Rel	ACI: 222
Dtrs: 336	Prod Herds: 84	SCI: 255
Milk: -18 Kgs	99% Rel	
Fat: +3.2 Kgs	+0.04%	Beta Casein: A1/A1
Protein: -0.3 Kgs	0.00%	Kappa Casein: AB

Management Traits	Date: Aug 8 2023	Source: AHDB
Dtr Fertility	2.9	Above Ave
Lifespan (days)	27	Above Ave
Direct CE	0.2	Above Ave
Maternal CE	0.5	Above Ave
SCC	1	Non-Improver
Mastitis	-1	Improver
Milk Spd	0.95	Above Ave
Temperment	0.88	Above Ave
Locomotion	0.04	Above Ave
BCS	0.31	Above Ave
Maintenance	-9 Kgs	Reduced
TB Advantage	0.6	Improver

Conformation	Dtrs: 25	Herds: 12	Rel: 69%
Type	0.62	Excellent	
Mammary	0.63	Excellent	
Legs & Feet	-0.17	Poor	
Stature	-0.71	Short	
Chest Width	-0.72	Narrow	
Body Depth	-2.09	Shallow	
Angularity	-1.00	Thick	
Rump Angle	-0.29	High	
Rump Width	0.90	Wide	
Rear Legs	-0.42	Straight	
Foot Angle	0.14	Steep	
Fore Udder	-0.12	Loose	
Rear Udder	1.80	High	
Udder Support	0.80	Strong	
Udder Depth	0.41	Shallow	
Front Teat PI	0.55	Close	
Teat Length	0.63	Long	
Rear Teat PI	0.15	Close	

PADDINGTON | BF1267 | INCH PADDINGTON

- Paddington is a great option for those looking to improve production and management traits.

Reg. Number: 937005767181
 Recessives: HH1T, HH2T, HH3T, HH4T, HH5T, HH6T, MWT, TC, TD, TL, TN, TS, TV, TY
 PERSISTENT x CHAD x HYLKE



BULL: 29H020363-Inch PADDINGTON-17mths

Production	Date: Aug 8 2023	Source: AHDB
PLI: 289	64% Rel	ACI: 351
Dtrs: 0	Herds: 0	SCI: 357
Milk: -27 Kgs	68% Rel	
Fat: +7.5 Kgs	+0.10%	Beta Casein: A1/A1
Protein: +4.9 Kgs	+0.08%	Kappa Casein: AA

Management Traits	Date: Aug 8 2023	Source: AHDB
Dtr Fertility	2.3	Above Ave
Lifespan (Days)	82	Above Ave
Direct CE	1.2	Above Ave
Maternal CE	0.1	Above Ave
SCC	-1	Improver
Mastitis	-1	Improver
Milk Spd	-0.09	Below Ave
Temperment	0.58	Above Ave
Locomotion	1.02	Above Ave
Body Cond	-1.40	Below Ave
Maintenance	-9 Kgs	Reduced Size
TB Advantage	1.6	Improver

Conformation	Dtrs: 0	Herds: 0	Rel: 54%
Type	1.21	Excellent	
Mammary	0.97	Excellent	
Legs & Feet	1.29	Excellent	
Stature	0.15	Tall	
Chest Width	-1.36	Narrow	
Body Depth	-0.71	Shallow	
Angularity	0.66	Angular	
Rump Angle	0.25	Sloped	
Rump Width	0.39	Wide	
Rear Legs	-0.24	Straight	
Foot Angle	-0.35	Low	
Fore Udder	0.12	Strong	
Rear Udder	1.09	High	
Udder Support	0.42	Strong	
Udder Depth	0.27	Shallow	
Front Teat PI	0.46	Close	
Teat Length	-0.23	Short	
Rear Teat PI	0.84	Close	

EPIC | BF1229 | WALWYN EPIC

- High Type with exceptional udders
- Health and Management improver
- No Chad bloodlines

Reg. Number: 746602703351
 Recessives: HH1T, HH2T, HH3T, HH4T, HH5T, HH6T, MWT, TC, TD, TL, TN, TS, TV, TY
 SOLO x PINNACLE x QUENTIN



BULL: 29H020177-Walwyn EPIC-17 Mths

Production	Date: Aug 8 2023	Source: AHDB
PLI: 122	64% Rel	ACI: 219
Dtrs: 0	Prod Herds: 0	SCI: 244
Milk: -191 Kgs	67% Rel	
Fat: +1.7 Kgs	+0.12%	Beta Casein: A1/A1
Protein: +0.7 Kgs	+0.10%	Kappa Casein: AB

Management Traits	Date: Aug 8 2023	Source: AHDB
Dtr Fertility	0.9	Above Ave
Lifespan (days)	37	Above Ave
Direct CE	1.4	Above Ave
Maternal CE	-0.7	Below Ave
SCC	6	Non-Improver
Mastitis	-1	Improver
Milk Spd	0.62	Above Ave
Temperment	1.38	Above Ave
Locomotion	0.3	Above Ave
BCS	1.02	Above Ave
Maintenance	10 Kgs	Increased
TB Advantage	0.3	Improver

Conformation	Dtrs: 0	Herds: 0	Rel: 55%
Type	1.51	Excellent	
Mammary	1.48	Excellent	
Legs & Feet	0.58	Excellent	
Stature	0.54	Tall	
Chest Width	0.92	Wide	
Body Depth	-0.10	Shallow	
Angularity	-0.36	Thick	
Rump Angle	-0.97	High	
Rump Width	-0.08	Narrow	
Rear Legs	-0.99	Straight	
Foot Angle	0.38	Steep	
Fore Udder	1.46	Strong	
Rear Udder	1.33	High	
Udder Support	0.59	Strong	
Udder Depth	1.36	Shallow	
Front Teat PI	0.92	Close	
Teat Length	-0.23	Short	
Rear Teat PI	0.51	Close	

SAMSON | BF1153 | GOONHILLY SAMSON

- Proven bull with over 700 milking daughters
- +174 Kgs Milk with positive protein%
- Proven calving ease with short gestation length

Reg. Number: 387868400937
 Recessives: HH1T, HH2T, HH3T, HH4T, HH5T, HH6T, MWT, TC, TD, TL, TN, TR, TS, TV, TY
 CHAD x HYLKE x CORSAIR



BULL: 29H017410-Goonhilly SAMSON-15mths

Production	Date: Aug 8 2023	Source: AHDB
PLI: 196	90% Rel	ACI: 240
Dtrs: 743	Prod Herds: 118	SCI: 233
Milk: +174 Kgs	99% Rel	
Fat: +7.3 Kgs	-0.01%	Beta Casein: A1/A1
Protein: +8.7 Kgs	+0.04%	Kappa Casein: AB

Management Traits	Date: Aug 8 2023	Source: AHDB
Dtr Fertility	-4.6	Below Ave
Lifespan (days)	73	Above Ave
Direct CE	1.8	Above Ave
Maternal CE	0.2	Above Ave
SCC	2	Non-Improver
Mastitis	-1	Improver
Milk Spd	1.74	Above Ave
Temperment	1.26	Above Ave
Locomotion	0.27	Above Ave
BCS	-0.97	Below Ave
Maintenance	0 Kgs	Increased
TB Advantage	3.4	Improver

Conformation	Dtrs: 93	Herds: 27	Rel: 81%
Type	0.67	Excellent	
Mammary	0.70	Excellent	
Legs & Feet	0.71	Excellent	
Stature	0.03	Tall	
Chest Width	0.32	Wide	
Body Depth	0.78	Deep	
Angularity	1.44	Angular	
Rump Angle	-0.42	High	
Rump Width	-0.09	Narrow	
Rear Legs	1.08	Sickle	
Foot Angle	-1.35	Low	
Fore Udder	-0.06	Loose	
Rear Udder	0.54	High	
Udder Support	-0.44	Weak	
Udder Depth	-1.04	Deep	
Front Teat PI	-0.67	Wide	
Teat Length	1.38	Long	
Rear Teat PI	0.15	Close	

JACOBI | BF1160 | DUNGORMLEY CHAD JACOBI

- Proven bull with wide chests and deep bodies
- +0.11% Fat +0.11% protein
- Easy calving and quiet disposition

Reg. Number: 924352526776
 Recessives: HH1T, HH2T, HH3T, HH4T, HH5T, HH6T, MWT, TC, TD, TL, TN, TR, TS, TV, TY
 CHAD x BENLOYAL x HYLKE



DAM: Dungormley Loyal Judith 2-8 years, BFE94(3), sixth lactation

Production	Date: Aug 8 2023	Source: AHDB
PLI: 167	89% Rel	ACI: 244
Dtrs: 348	Prod Herds: 64	SCI: 249
Milk: -82 Kgs	99% Rel	
Fat: +5.9 Kgs	+0.11%	Beta Casein: A1/A1
Protein: +5.2 Kgs	+0.11%	Kappa Casein: AA

Management Traits	Date: Aug 8 2023	Source: AHDB
Dtr Fertility	-3.3	Below Ave
Lifespan (days)	49	Above Ave
Direct CE	1.3	Above Ave
Maternal CE	-0.3	Below Ave
SCC	3	Non-Improver
Mastitis	-1	Improver
Milk Spd	0.77	Above Ave
Temperment	2.29	Above Ave
Locomotion	0.48	Above Ave
BCS	-0.05	Below Ave
Maintenance	4 Kgs	Increased
TB Advantage	0.2	Improver

Conformation	Dtrs: 102	Herds: 22	Rel: 81%
Type	0.99	Excellent	
Mammary	1.02	Excellent	
Legs & Feet	0.60	Excellent	
Stature	0.08	Tall	
Chest Width	0.59	Wide	
Body Depth	0.44	Deep	
Angularity	0.42	Angular	
Rump Angle	-1.10	High	
Rump Width	-0.57	Narrow	
Rear Legs	0.89	Sickle	
Foot Angle	-1.01	Low	
Fore Udder	0.21	Strong	
Rear Udder	0.14	High	
Udder Support	-0.84	Weak	
Udder Depth	-0.30	Deep	
Front Teat PI	-0.23	Wide	
Teat Length	-0.26	Short	
Rear Teat PI	0.55	Close	

VERITAS | BF1237 | WYEVALLEY VERITAS

- VERITAS holds tremendous udder health being #1 for Mastitis -3 and #2 for SCC -8 !!

Reg. Number: 119462700041
 Recessives: HH1T, HH2T, HH3T, HH4T, HH5T, HH6T, MWT, TC, TD, TL, TN, TS, TV, TY
 KARACTACUS x CHAD x HYLKE



BULL: 29H020184-Wyevally VERITAS-17mths

Production	Date: Aug 8 2023	Source: AHDB
PLI: 273	65% Rel	ACI: 314
Dtrs: 0	Herds: 0	SCI: 318
Milk: -4 Kgs	68% Rel	
Fat: +3.8 Kgs	+0.04%	Beta Casein: A1/A1
Protein: +7.4 Kgs	+0.10%	Kappa Casein: AB

Management Traits	Date: Aug 8 2023	Source: AHDB
Dtr Fertility	-4.0	Below Ave
Lifespan (Days)	58	Above Ave
Direct CE	0.9	Above Ave
Maternal CE	0.1	Above Ave
SCC	-8	Improver
Mastitis	-3	Improver
Milk Spd	0	Above Ave
Temperment	0.46	Above Ave
Locomotion	0.86	Above Ave
Body Cond	0.02	Above Ave
Maintenance	-5 Kgs	Reduced Size
TB Advantage	1.5	Improver

Conformation	Dtrs: 0	Herds: 0	Rel: 56%
Type	0.92	Excellent	
Mammary	0.87	Excellent	
Legs & Feet	0.95	Excellent	
Stature	-0.75	Short	
Chest Width	0.20	Wide	
Body Depth	0.17	Deep	
Angularity	0.23	Angular	
Rump Angle	-1.25	High	
Rump Width	0.12	Wide	
Rear Legs	-0.43	Straight	
Foot Angle	-0.15	Low	
Fore Udder	0.25	Strong	
Rear Udder	0.66	High	
Udder Support	0.49	Strong	
Udder Depth	-0.08	Deep	
Front Teat PI	0.63	Close	
Teat Length	0.37	Long	
Rear Teat PI	0.59	Close	